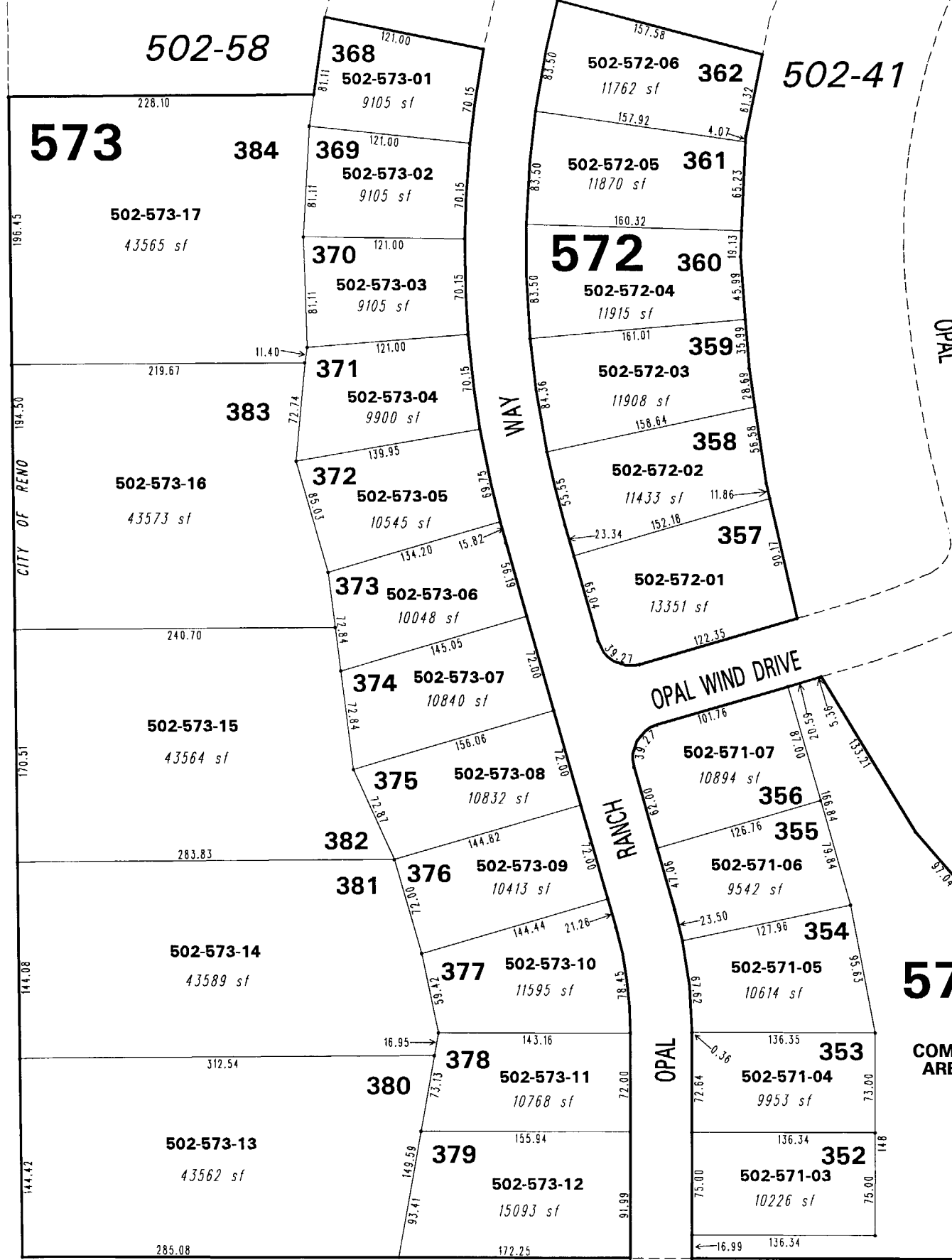


(#4514)
NORTHSTAR RANCH PHASE 3
PORTION OF THE EAST 1/2 OF SECTION 14
T20N - R19E

502-09

SPEARHEAD
WASHOE COUNTY
WAY



502-40

502-41

502-52

571

502-75

502-74

NOTE: This map is prepared for the use of the Washoe County Assessor for assessment and illustrative purposes only. It does not represent a survey of the premises. No liability is assumed as to the sufficiency or the accuracy of the data delineated hereon.

Office of Washoe County Assessor, Nevada - Joshua G. Wilson

This area previously shown on 502-02

NOTE: Areas of parcels which are less than 2 acres are shown in square feet.

Drawn by PK 08/09/05
 Revised NLH 5/02/08 NLH 9/24/08
 NLH 5/14/09

