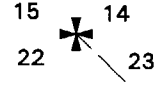
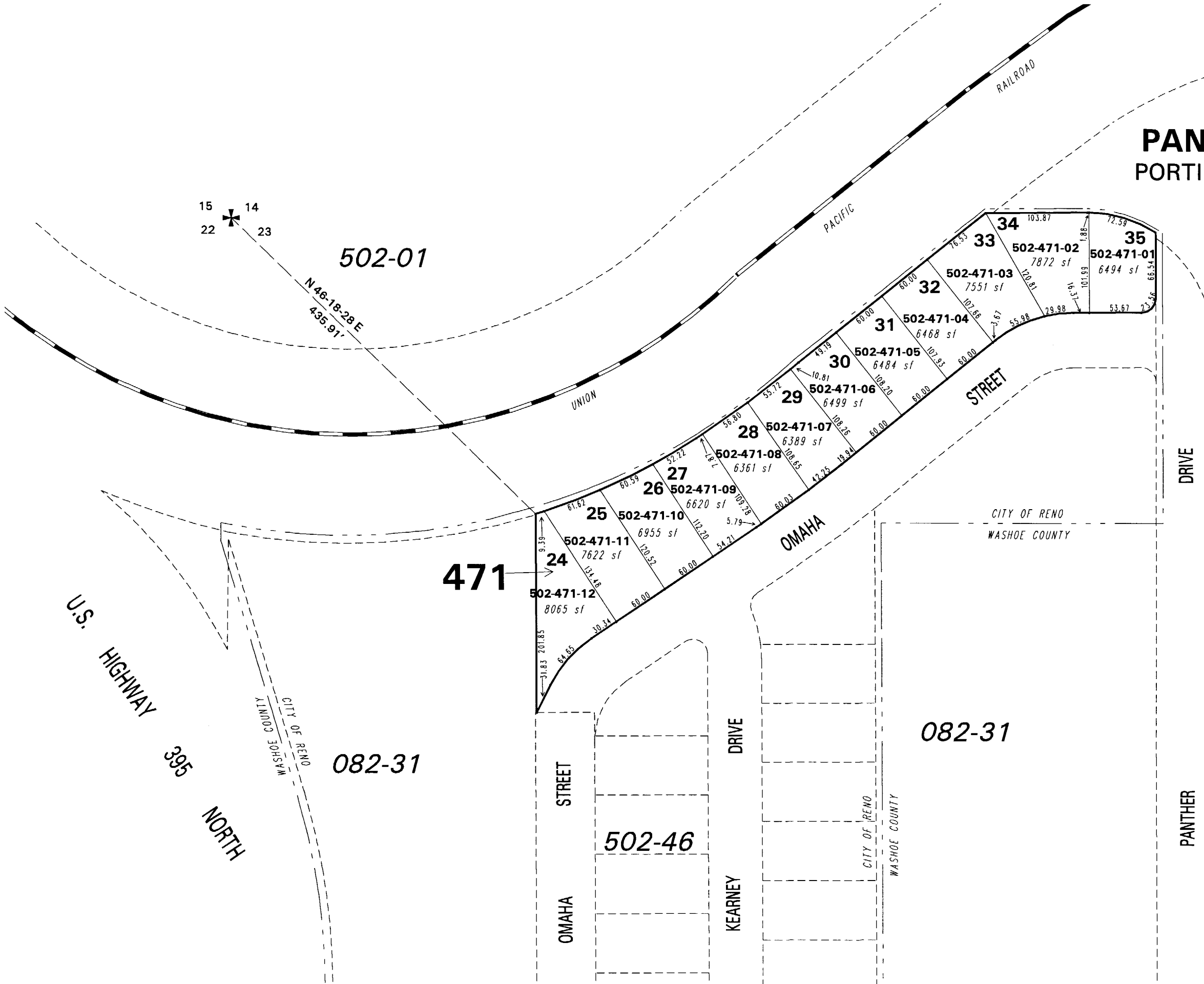


(#4448)  
**PANTHER VALLEY ESTATES**  
PORTION OF THE NW 1/4 OF SECTION 23  
T20N - R19E



502-01  
N 46-18-28 E  
435.91'

082-60

082-31

082-31

502-46

471

U.S. HIGHWAY  
395  
NORTH

WASHOE COUNTY  
CITY OF RENO

STREET  
OMAHA

DRIVE  
KEARNEY

CITY OF RENO  
WASHOE COUNTY

DRIVE  
PANTHER

CITY OF RENO  
WASHOE COUNTY

NOTE: This map is prepared for the use of the Washoe County Assessor for assessment and illustrative purposes only. It does not represent a survey of the premises. No liability is assumed as to the sufficiency or the accuracy of the data delineated hereon.

Office of Washoe County Assessor, Nevada - Robert W. McGowan

This area previously shown on 082-31

NOTE: Areas of parcels which are less than 2 acres are shown in square feet.

Drawn by PK 03/22/05  
Revised

