

502-38

502-62

502-55

502-54

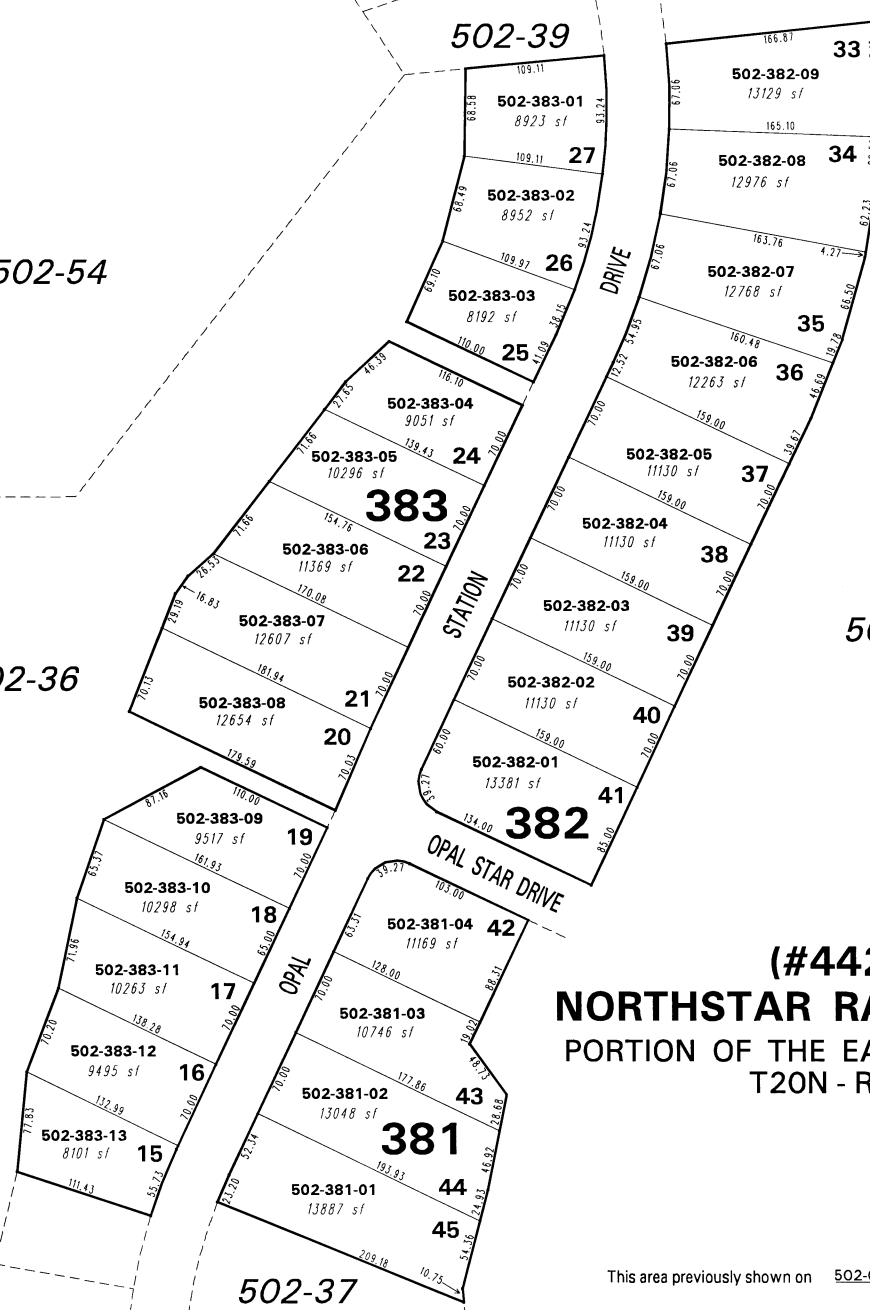
502-36

502-01

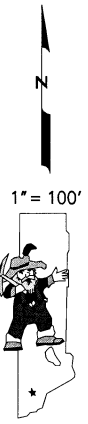
502-37

502-39

Office of Washoe County Assessor, Nevada - Joshua G. Wilson



(#4424)
NORTHSTAR RANCH PHASE 1
 PORTION OF THE EAST 1/2 OF SEC. 14
 T20N - R19E



NOTE: This map is prepared for the use of the Washoe County Assessor for assessment and illustrative purposes only. It does not represent a survey of the premises. No liability is assumed as to the sufficiency or the accuracy of the data delineated hereon.

This area previously shown on 502-02

NOTE: Areas of parcels which are less than 2 acres are shown in square feet.

Drawn by	PK 01/19/05
Revised	PK 7/9/05 PK 8/15/05
NLH	9/24/08