

502-30

**(#4347)**  
**GOLDEN HIGHLANDS PHASE 4**  
PORTIONS OF NW 1/4 OF SEC. 14  
NE 1/4 OF SEC. 15, T20N - R19E

502-31

ROLLING RIDGE RD

082-51

WASHOE CO.

CITY OF RENO

ORDINANCE #5607  
ANNEX. TM. 4414

COMMON  
AREA A

502-301-02  
18.015 ac.

301

502-09

WAY

502-02

244.00 190.00

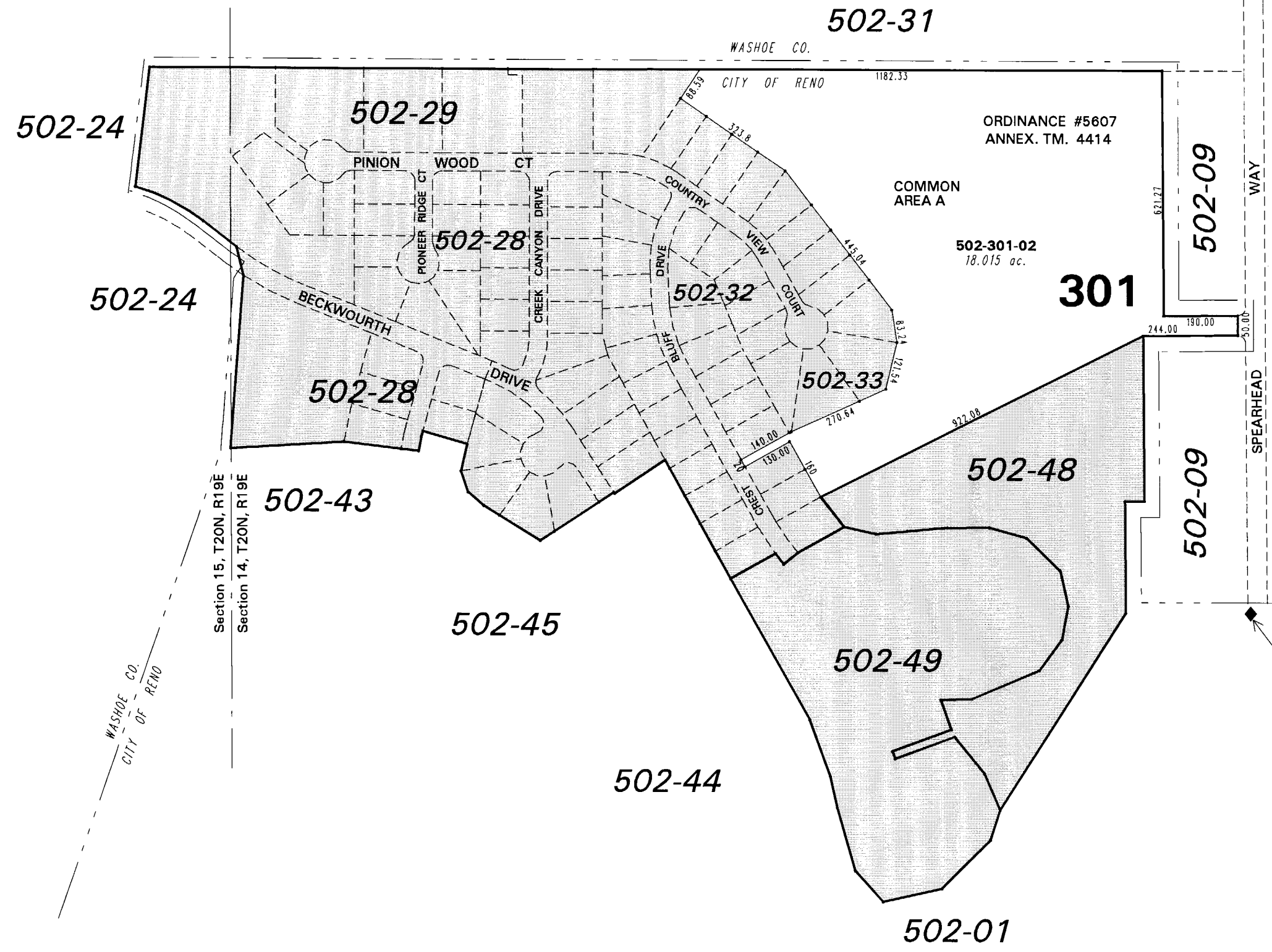
502-09

SPEARHEAD

Center Section 14, T20N, R19E



1" = 300'



NOTE: This map is prepared for the use of the Washoe County Assessor for assessment and illustrative purposes only. It does not represent a survey of the premises. No liability is assumed as to the sufficiency or the accuracy of the data delineated hereon.

Office of Washoe County Assessor, Nevada - Joshua G. Wilson

This area previously shown on 502-01

NOTE: Areas of parcels which are less than 2 acres are shown in square feet.

Drawn by CFB 11/22/2003  
Revised PK 12/23/04 PK 1/25/05  
PK 5/10/05 PK 6/7/05 JL 4/5/07