

(#4275)
**GOLDEN HIGHLANDS
PHASE 3**

PORTIONS OF NW 1/4 OF SEC. 14 &
NE 1/4 OF SEC. 15, T20N - R19E

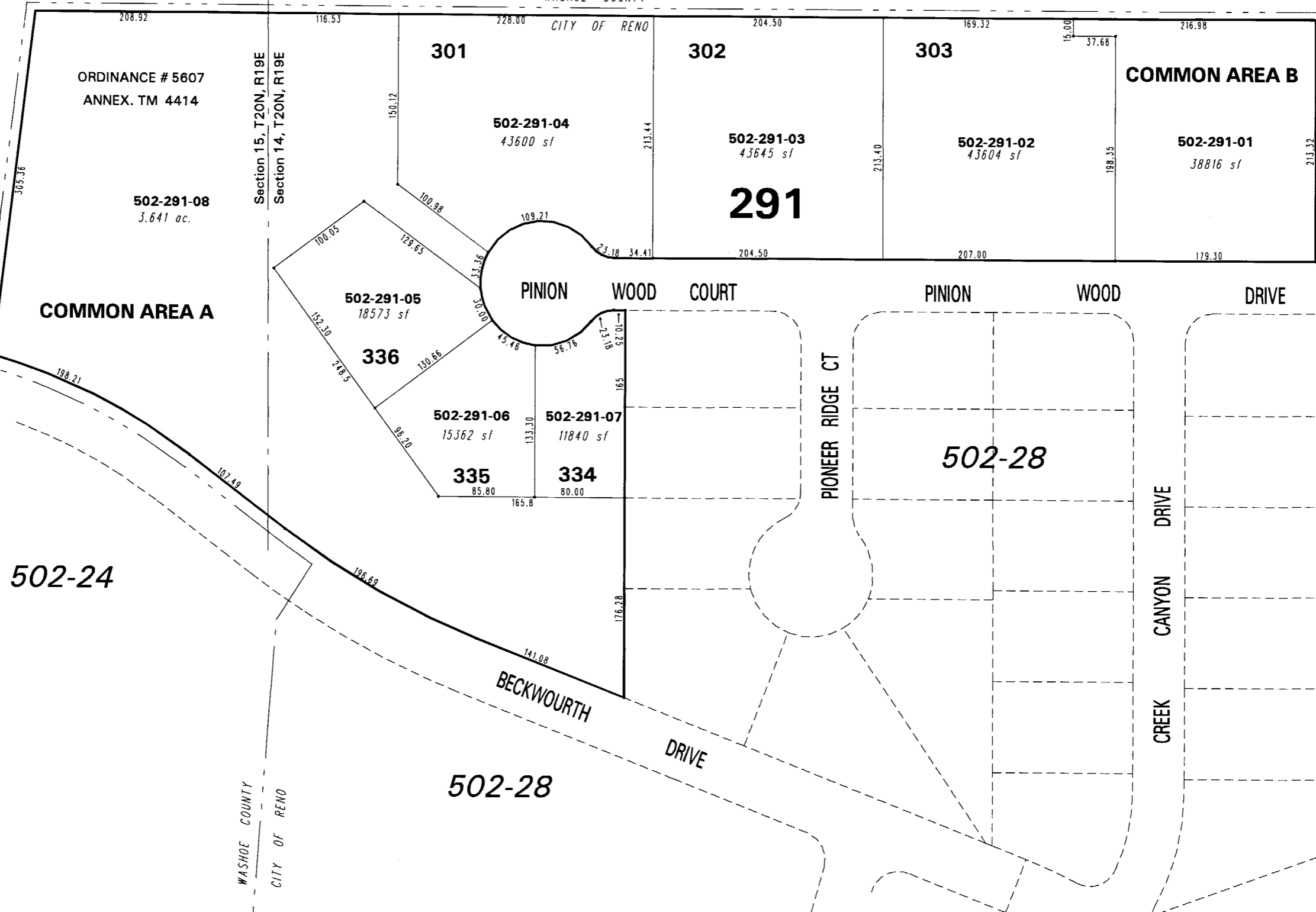
ANNEX. TM 4414 - ORD. 5607

502-31

502-24

502-33

502-32



NOTE: This map is prepared for the use of the Washoe County Assessor for assessment and illustrative purposes only. It does not represent a survey of the premises. No liability is assumed as to the sufficiency or the accuracy of the data delineated hereon.

Office of Washoe County Assessor, Nevada - Robert W. McGowan

This area previously shown on 502-01

NOTE: Areas of parcels which are less than 2 acres are shown in square feet.

Drawn by	CFB 11/22/2003
Revised	PK 4/29/04 PK 6/22/04
	PK 4/29/05 PK 5/09/05

