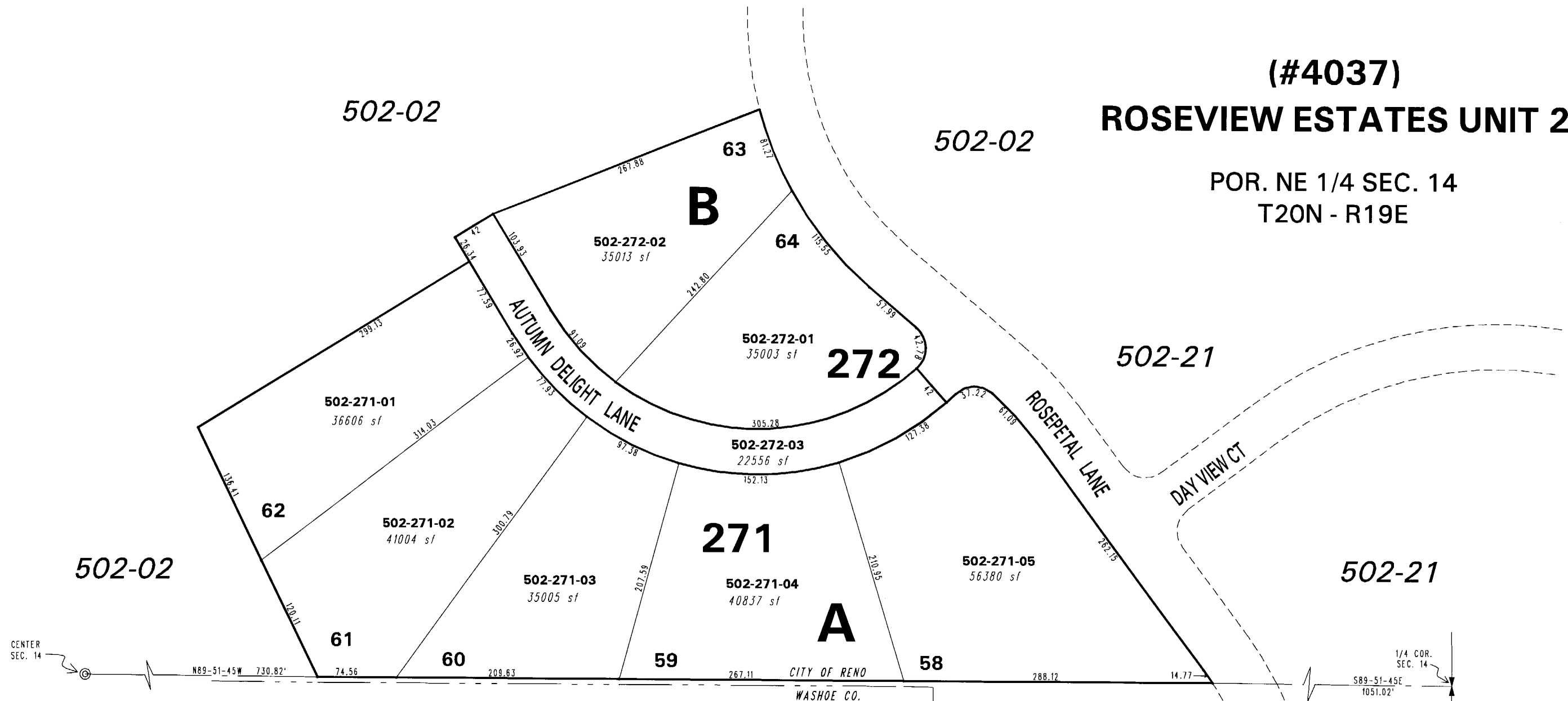


(#4037)
ROSEVIEW ESTATES UNIT 2

POR. NE 1/4 SEC. 14
T20N - R19E



**NO ACTIVE PARCELS ON THIS PAGE
SEE BOOK 502, PAGE 02**

502-01

502-02

ROSEVIEW ESTATES UNIT 2 (TM 4037)
ANNEXED TO THE CITY OF RENO PER
ANNEX. TM 4161, ORD. 5398

Office of Washoe County Assessor, Nevada - Robert W. McGowan

NOTE: This map is prepared for the use of the Washoe County Assessor for assessment and illustrative purposes only. It does not represent a survey of the premises. No liability is assumed as to the sufficiency or the accuracy of the data delineated hereon.

This area previously shown on 502-02

NOTE: Areas of parcels which are less than 2 acres are shown in square feet.

Drawn by	HCS 01/10/02
Revised	HCS 2/20/02 KSB 2/10/03
PK	9/30/04

