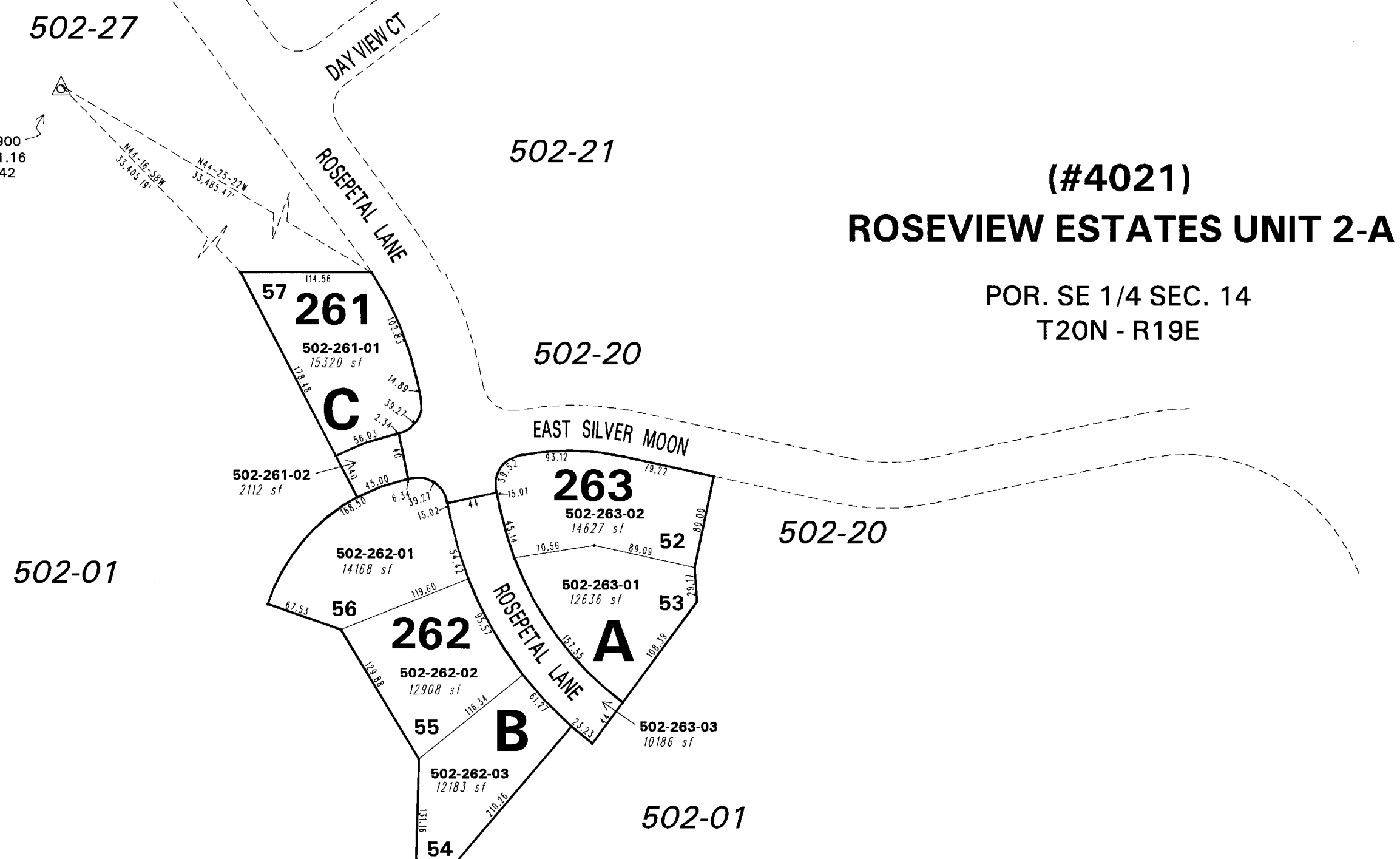


GPS POINT #900
N 14,918,381.16
E 2,255,592.42



**(#4021)
ROSEVIEW ESTATES UNIT 2-A**

POR. SE 1/4 SEC. 14
T20N - R19E

**NO ACTIVE PARCELS ON THIS PAGE
SEE BOOK 502, PAGE 02**

NOTE: This map is prepared for the use of the Washoe County Assessor for assessment and illustrative purposes only. It does not represent a survey of the premises. No liability is assumed as to the sufficiency or the accuracy of the data delineated hereon.

Office of Washoe County Assessor, Nevada - Robert W. McGowan

This area previously shown on 502-02

Drawn by	HCS	12/06/01
Revised	HCS	1/7/02 PK 9/30/04

NOTE: Areas of parcels which are less than 2 acres are shown in square feet.