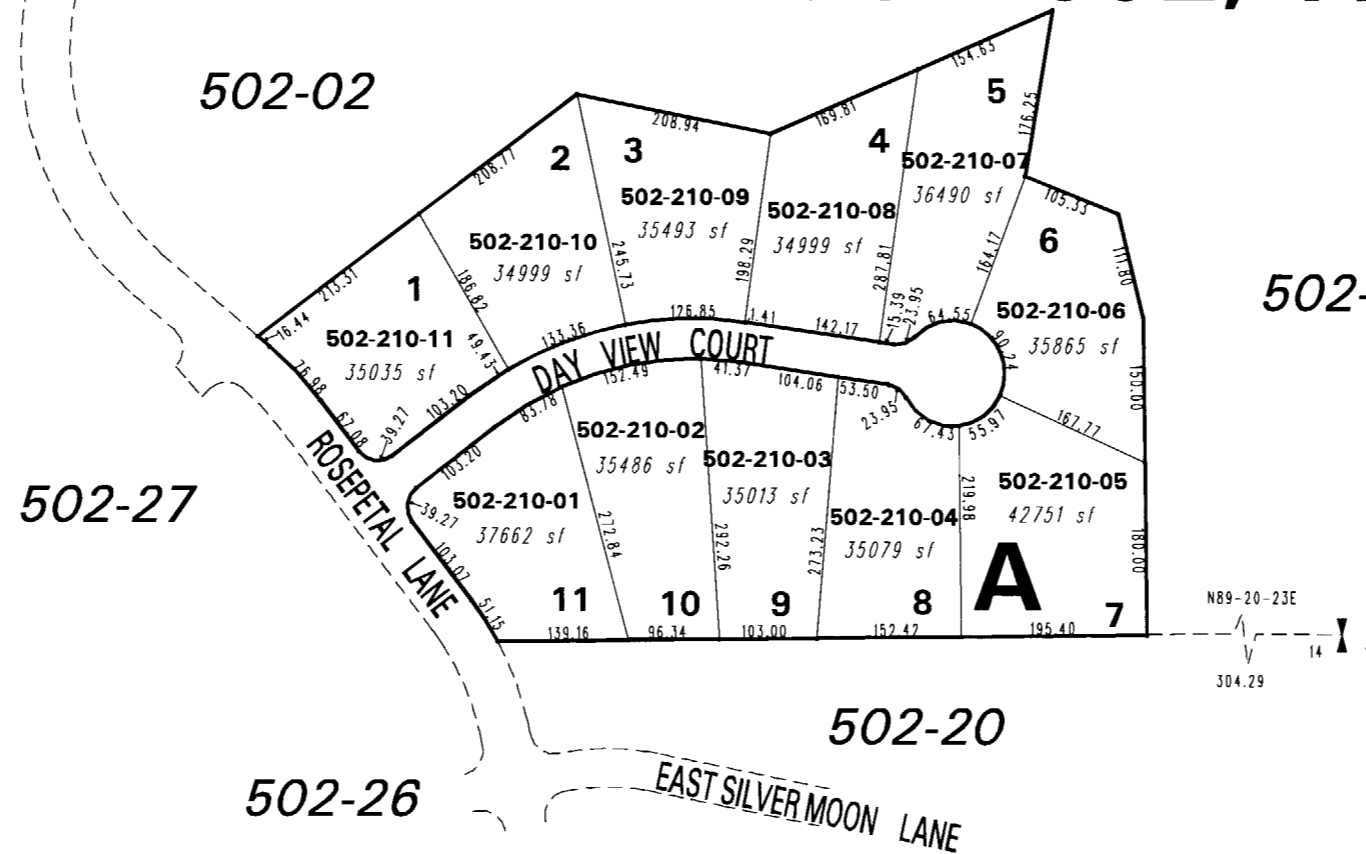


NO ACTIVE PARCELS ON THIS PAGE SEE BOOK 502, PAGE 02

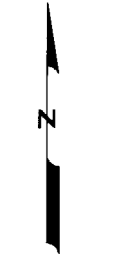
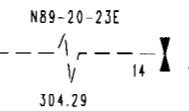


502-02

(#3794)

ROSEVIEW ESTATES UNIT 1

PORTION OF E 1/2 OF SECTION 14
T20N - R19E



1" = 200'



ROSEPetal Lane & DAY VIEW COURT
ARE PARCELED ON PAGE 502-02

ROSEVIEW ESTATES UNIT 1 (TM 3794)
ANNEXED TO THE CITY OF RENO PER
ANNEX. TM 4161, ORD. 5398

NOTE: This map is prepared for the use of the Washoe County Assessor for assessment and illustrative purposes only. It does not represent a survey of the premises. No liability is assumed as to the sufficiency or the accuracy of the data delineated hereon.

Office of Washoe County Assessor, Nevada - Robert W. McGowan

This area previously shown on 82-47

NOTE: Areas of parcels which are less than 2 acres are shown in square feet.

Drawn by	DSR 02/11/00
Revised	HCS 1/10/02 KSB 2/10/03
PK	9/30/04