

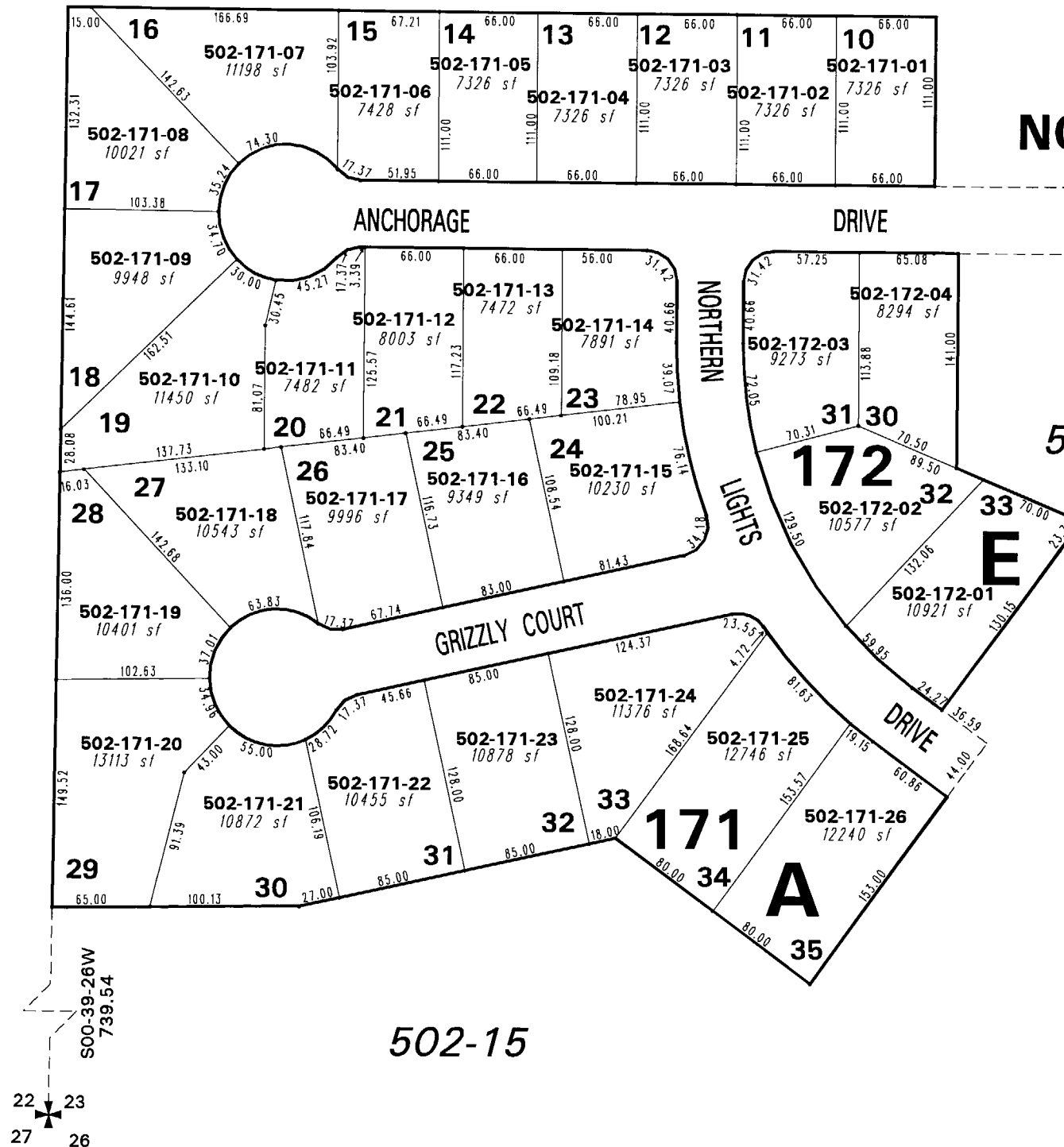
082-45

502-05

082-84

**(#3476)
NORTHERN LIGHTS SUBDIVISION
UNIT 4**

A PORTION OF THE SW 1/4 OF SEC. 23
T20N - R19E



CURRENT AS OF

MAY 09 2007

WASHOE CO. ASSESSOR

1" = 100'



NOTE: This map is prepared for the use of the Washoe County Assessor for assessment and illustrative purposes only. It does not represent a survey of the premises. No liability is assumed as to the sufficiency or the accuracy of the data delineated hereon.

Office of Washoe County Assessor, Nevada - Joshua G. Wilson

This area previously shown on 82-81

NOTE: Areas of parcels which are less than 2 acres are shown in square feet.

Drawn by	12/26/97 TJF
Revised	1/20/99 RLT DSR 12/15/99*
PK	7/23/04 TWT 4/18/07