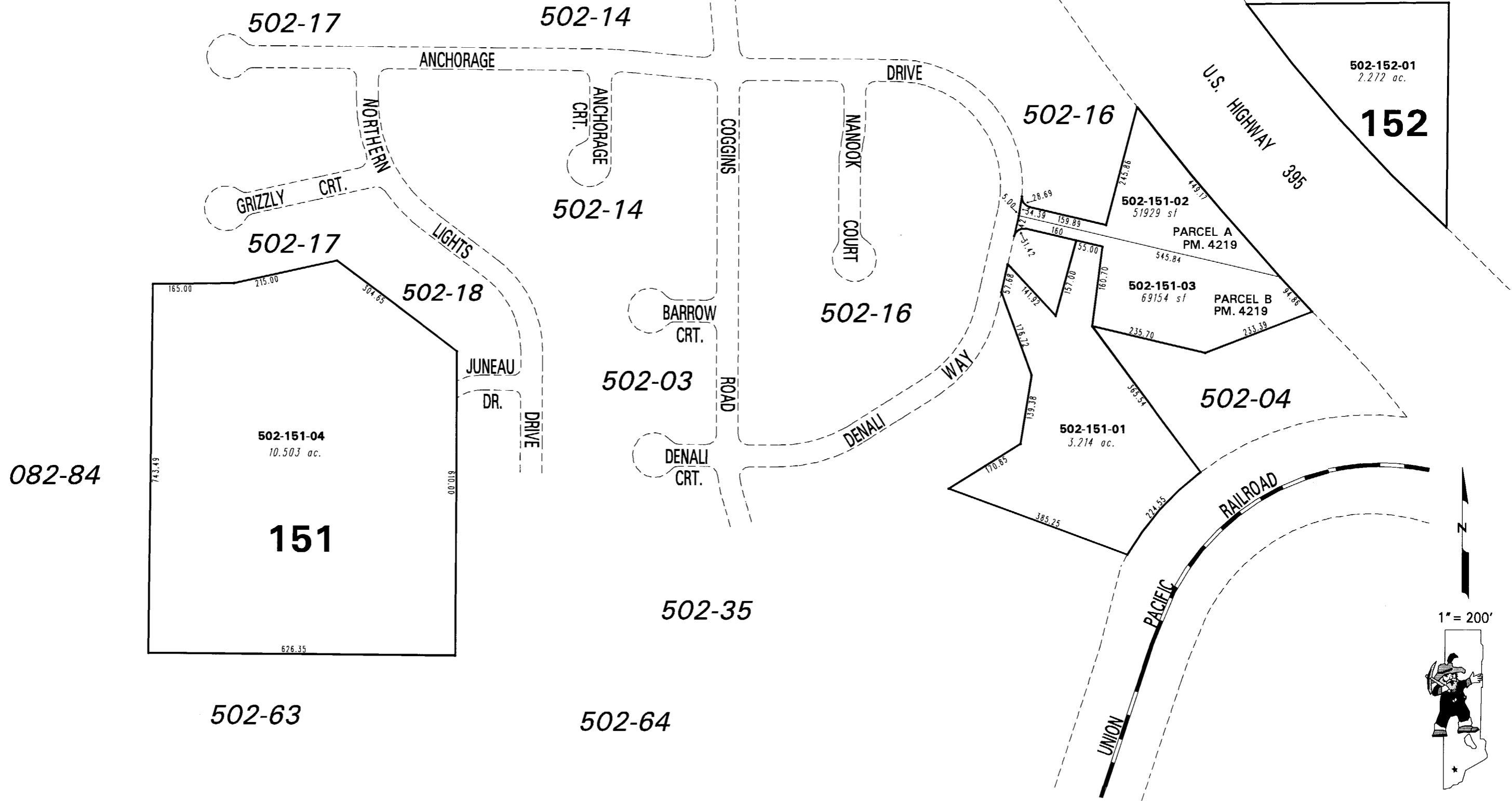


**(#3185)
NORTHERN LIGHTS SUBDIVISION
UNIT - 2
PORTION SW 1/4 SECTION 23
T20N - R19E**

502-15

82-45



082-84

151

152

502-63

502-64

NOTE: This map is prepared for the use of the Washoe County Assessor for assessment and illustrative purposes only. It does not represent a survey of the premises. No liability is assumed as to the sufficiency or the accuracy of the data delineated hereon.

Office of Washoe County Assessor, Nevada - Joshua G. Wilson

This area previously shown on 082-78 & 082-40

NOTE: Areas of parcels which are less than 2 acres are shown in square feet.

Drawn by <u>PK 07/23/04</u>
Revised <u>PK 8/30/05 TWT 4/18/07</u>