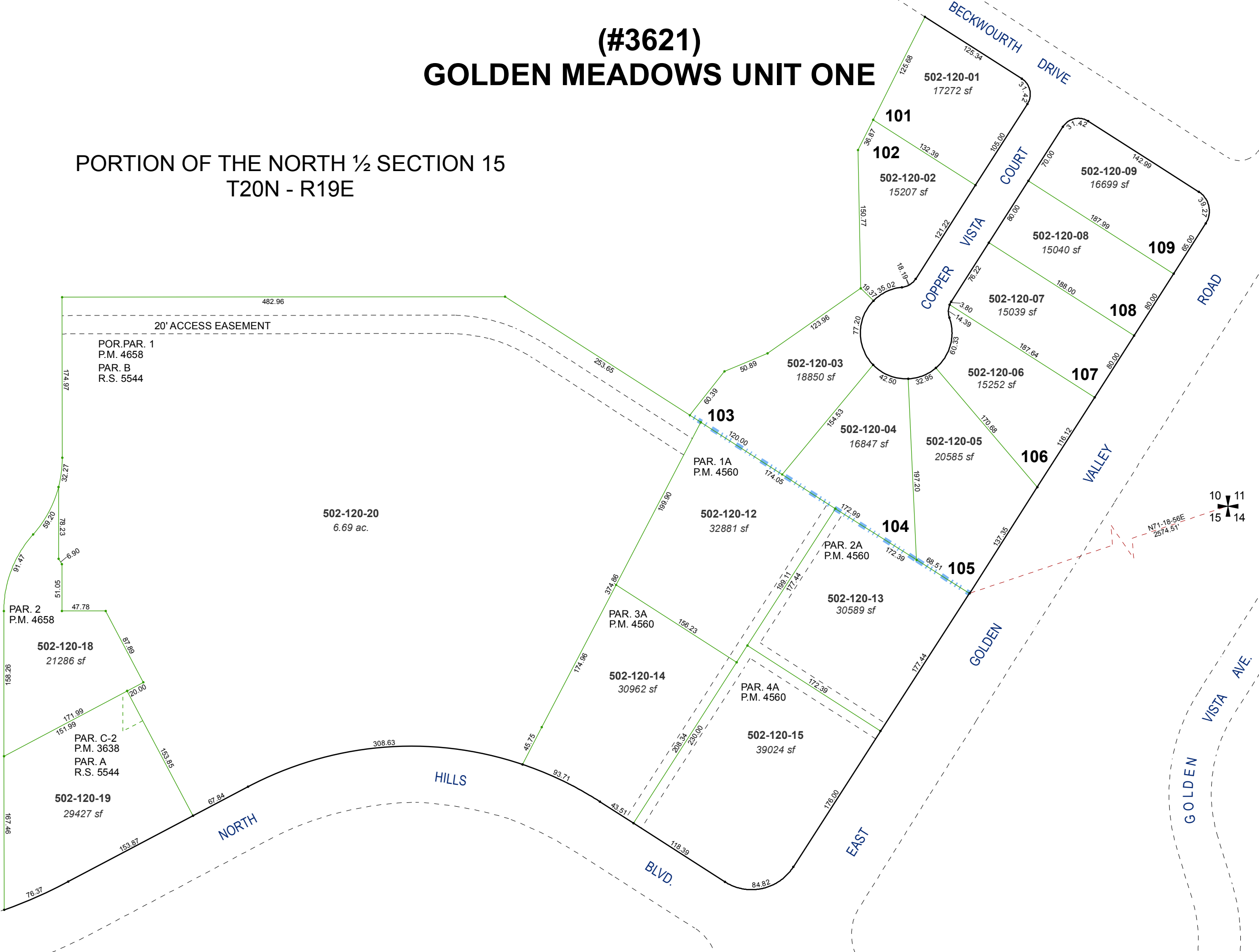


(#3621) GOLDEN MEADOWS UNIT ONE

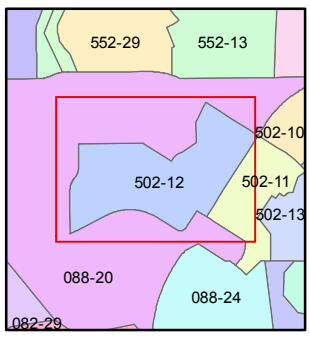
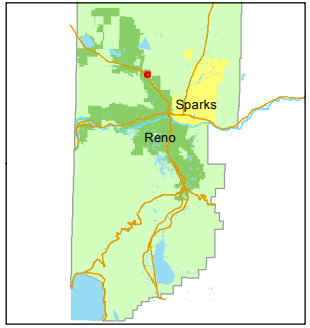
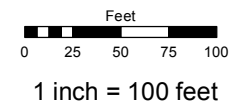
PORTION OF THE NORTH ½ SECTION 15
T20N - R19E



Assessor's Map Number
502-12

STATE OF NEVADA
WASHOE COUNTY
ASSESSOR'S OFFICE
Joshua G. Wilson, Assessor

1001 East Ninth Street
Building D
Reno, Nevada 89512
(775) 328-2231



created by: EMG 5/13/2014
last updated: _____
area previously shown on map(s)
088-20

NOTE: This map was prepared for the use of the Washoe County Assessor for assessment and illustrative purposes only. It does not represent a survey of the premises. No liability is assumed as to the sufficiency or accuracy of the data delineated hereon.