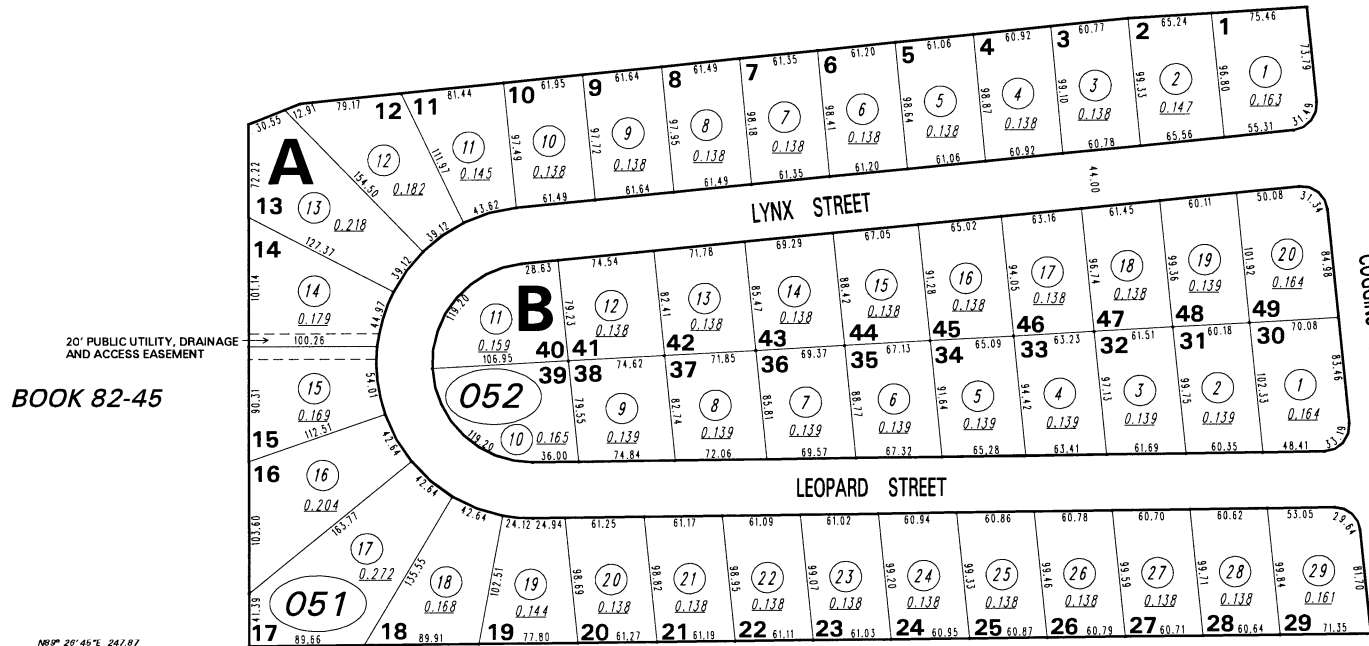


NORTHSIDE VILLAGE SUBDIVISION (#3287)

POR. SW ¼ SEC. 23, T20N - R19E

BOOK 82-45



BOOK 82-45

BOOK 82-45

22	23
27	26

NOTE: This map is prepared for the use of the Washoe County Assessor for assessment and illustrative purposes only. It does not represent a survey of the premises. No liability is assumed as to the sufficiency or the accuracy of the data delineated hereon.

Office of Washoe County Assessor, Nevada - Robert W. McGowan

This area previously shown on BK 82-45

NOTE:

ASSESSOR'S BLOCK NUMBERS SHOWN IN ELLIPSES
ASSESSOR'S PARCEL NUMBERS SHOWN IN CIRCLES

Drawn by	GZ 9/3/96
Revised	12/30/97 TJF
DSR	12/20/99 CFB 10/4/00

