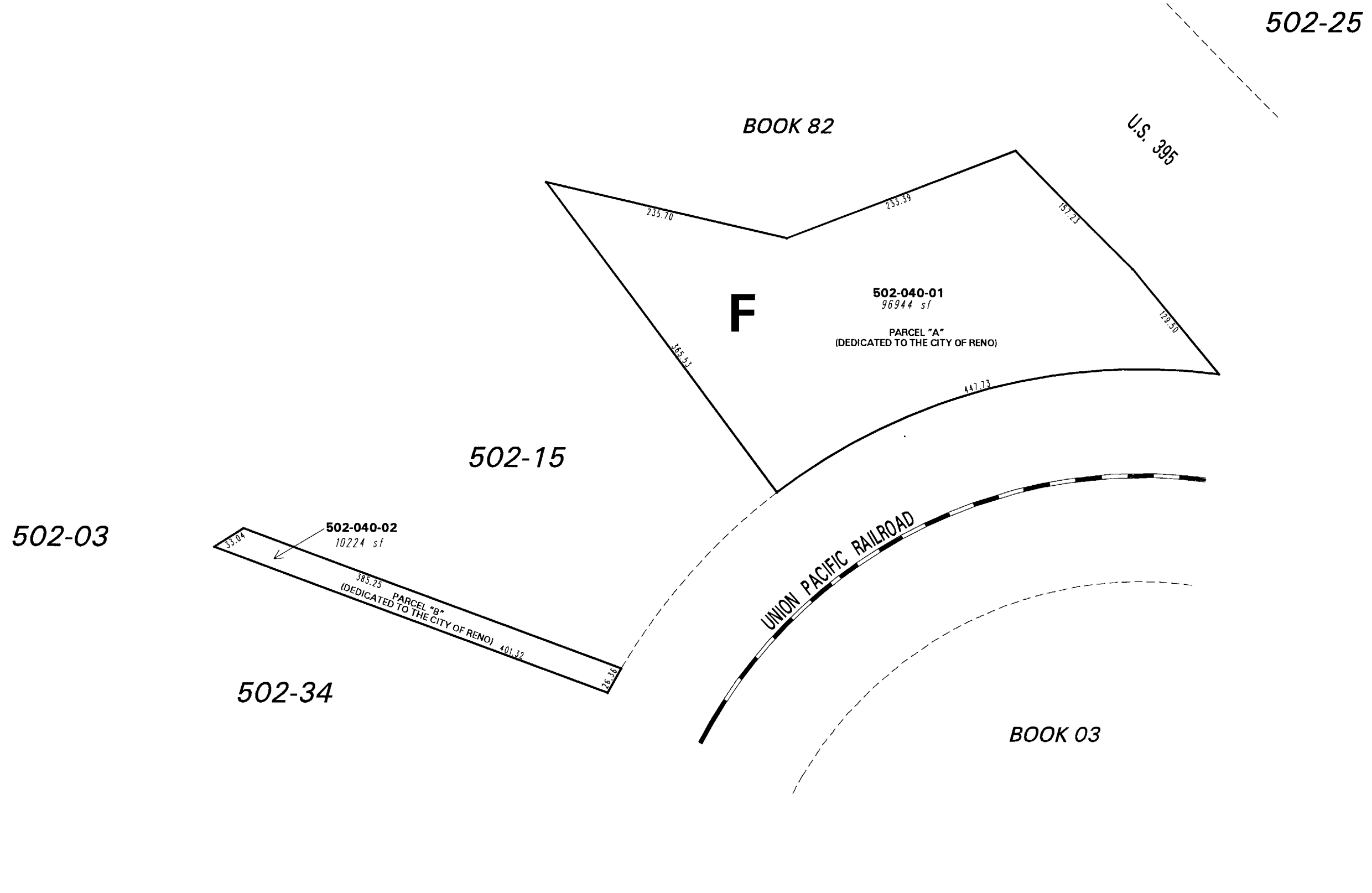


NORTHERN LIGHTS SUBDIVISION - UNIT 3 (#3268)

POR. SW ¼ SEC. 23, T20N - R19E



NOTE: This map is prepared for the use of the Washoe County Assessor for assessment and illustrative purposes only. It does not represent a survey of the premises. No liability is assumed as to the sufficiency or the accuracy of the data delineated hereon.

Office of Washoe County Assessor, Nevada - Robert W. McGowan

This area previously shown on _____

NOTE: Areas of parcels which are less than 2 acres are shown in square feet.

Drawn by <u>GZ 8/19/96</u> Revised <u>PK 6/28/04</u>
<small>ARC INFO 8.1.2 WINDOWS 2000 5.0</small>

