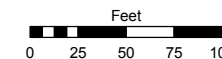
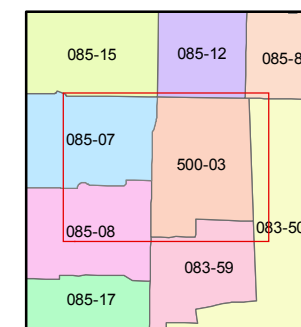
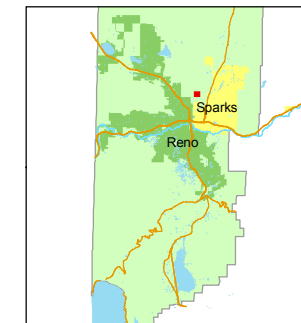


STATE OF NEVADA  
**WASHOE COUNTY**  
**ASSESSOR'S OFFICE**  
Joshua G. Wilson, Assessor

1001 East Ninth Street  
Building D  
Reno, Nevada 89512  
(775) 328-2231



1 inch = 100 feet



created by: DSR 10/18/2010

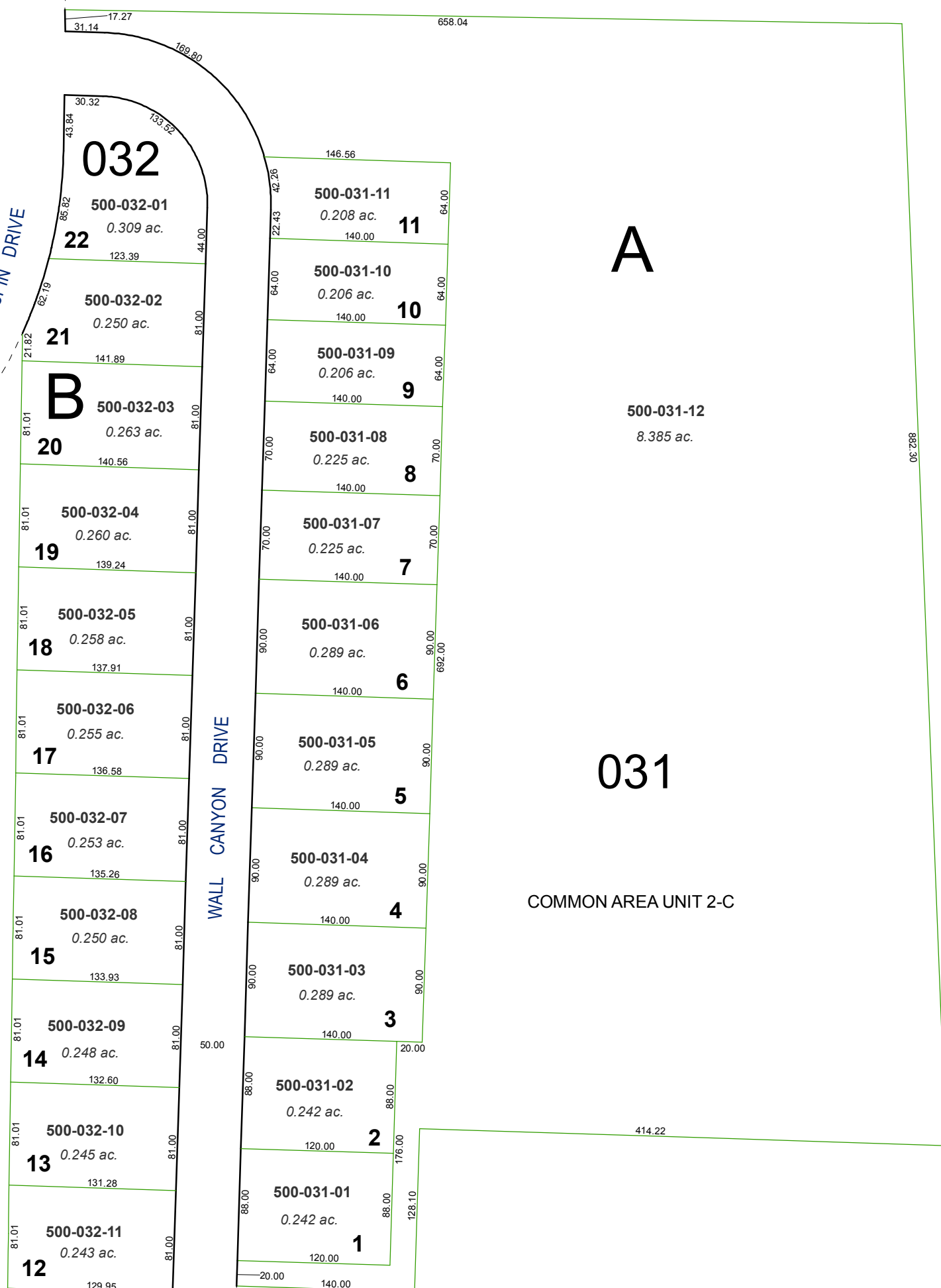
last updated: \_\_\_\_\_

area previously shown on map(s)

083-06

NOTE: This map was prepared for the use of the Washoe County Assessor for assessment and illustrative purposes only. It does not represent a survey of the premises. No liability is assumed as to the sufficiency or accuracy of the data delineated hereon.

**(#3113)**  
**JUNIPER HEIGHTS UNIT 2-C**  
POR. OF THE NW 1/4 OF THE SW 1/4  
OF SECTION 20, T20N - R20E



GEPFORD PARKWAY

LUPIN DRIVE

WALL CANYON DRIVE

A

031

COMMON AREA UNIT 2-C