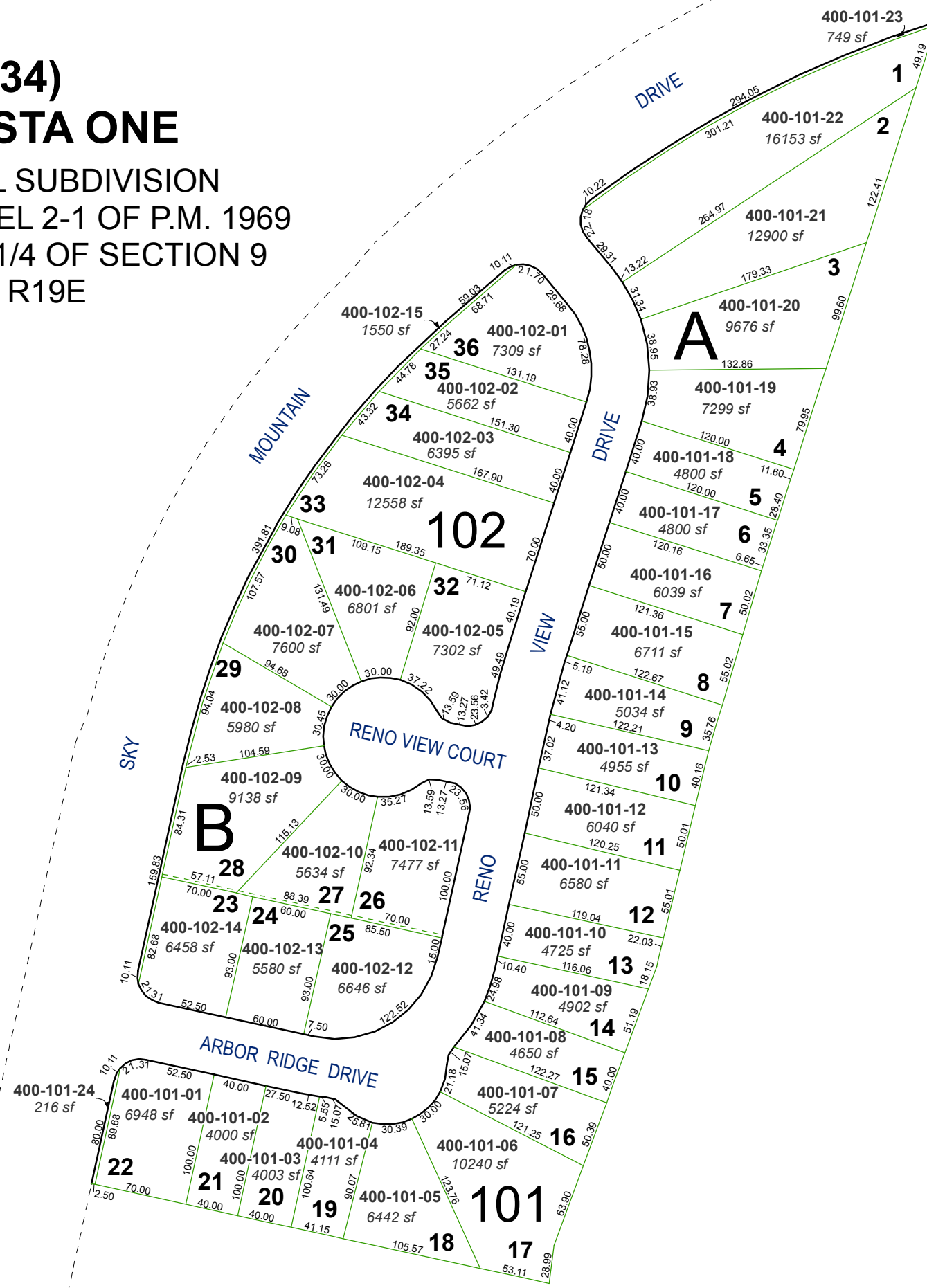


**(#2934)
RENO VISTA ONE**

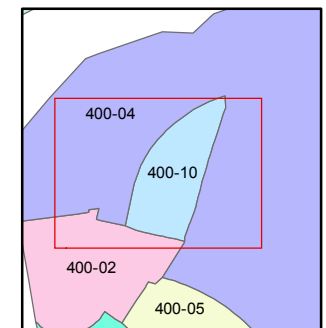
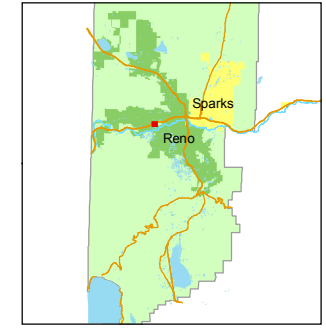
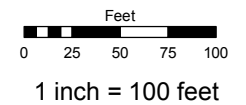
A RESIDENTIAL SUBDIVISION
A DIVISION OF PARCEL 2-1 OF P.M. 1969
PORTION OF SW 1/4 OF SECTION 9
T19N - R19E



Assessor's Map Number
400-10

STATE OF NEVADA
WASHOE COUNTY
ASSESSOR'S OFFICE
Joshua G. Wilson, Assessor

1001 East Ninth Street
Building D
Reno, Nevada 89512
(775) 328-2231



created by: DSR 3/07/2011
last updated: _____
area previously shown on map(s)
05-29

NOTE: This map was prepared for the use of the Washoe County Assessor for assessment and illustrative purposes only. It does not represent a survey of the premises. No liability is assumed as to the sufficiency or accuracy of the data delineated hereon.