

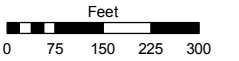
PORTIONS OF SOUTH 1/2 OF SEC. 9 & NORTH 1/2 OF SEC. 16, T19N - R19E

Assessor's Map Number

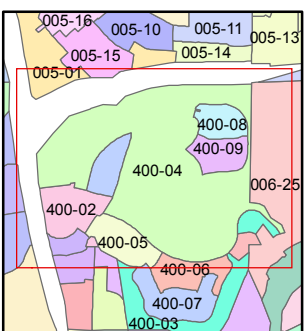
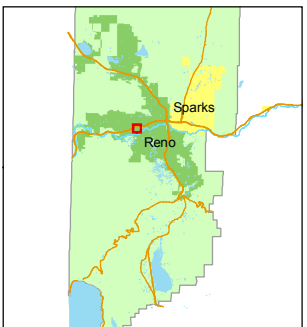
400-04

STATE OF NEVADA
WASHOE COUNTY
ASSESSOR'S OFFICE
 Joshua G. Wilson, Assessor

1001 East Ninth Street
 Building D
 Reno, Nevada 89512
 (775) 328-2231



1 inch = 300 feet



created by: DSR 1/31/2011

last updated: _____

area previously shown on map(s)

05-18

NOTE: This map was prepared for the use of the Washoe County Assessor for assessment and illustrative purposes only. It does not represent a survey of the premises. No liability is assumed as to the sufficiency or accuracy of the data delineated hereon.

