

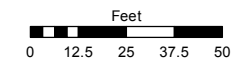
**(#4437)
THE COTTAGES**
POR. OF NW 1/4 SECTION 21
T19N - R20E

Assessor's Map Number

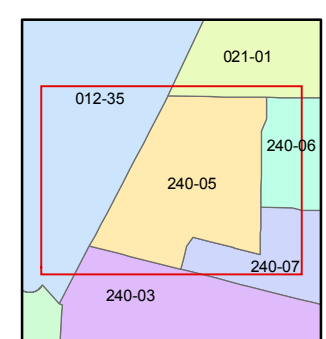
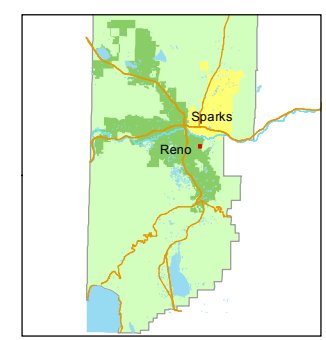
240-05

STATE OF NEVADA
WASHOE COUNTY
ASSESSOR'S OFFICE
Joshua G. Wilson, Assessor

1001 East Ninth Street
Building D
Reno, Nevada 89512
(775) 328-2231



1 inch = 50 feet



created by: KSB 2/06/2012

last updated: _____

area previously shown on map(s)
021-04

NOTE: This map was prepared for the use of the Washoe County Assessor for assessment and illustrative purposes only. It does not represent a survey of the premises. No liability is assumed as to the sufficiency or accuracy of the data delineated hereon.

