

Assessor's Map Number

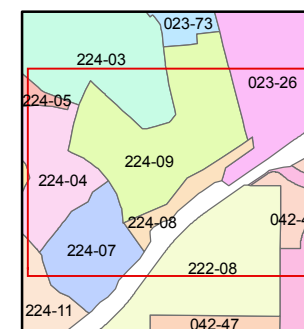
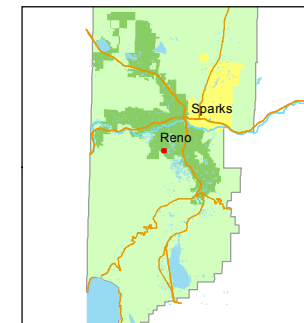
**224-08**

STATE OF NEVADA  
**WASHOE COUNTY**  
**ASSESSOR'S OFFICE**  
Joshua G. Wilson, Assessor

1001 East Ninth Street  
Building D  
Reno, Nevada 89512  
(775) 328-2231



1 inch = 100 feet



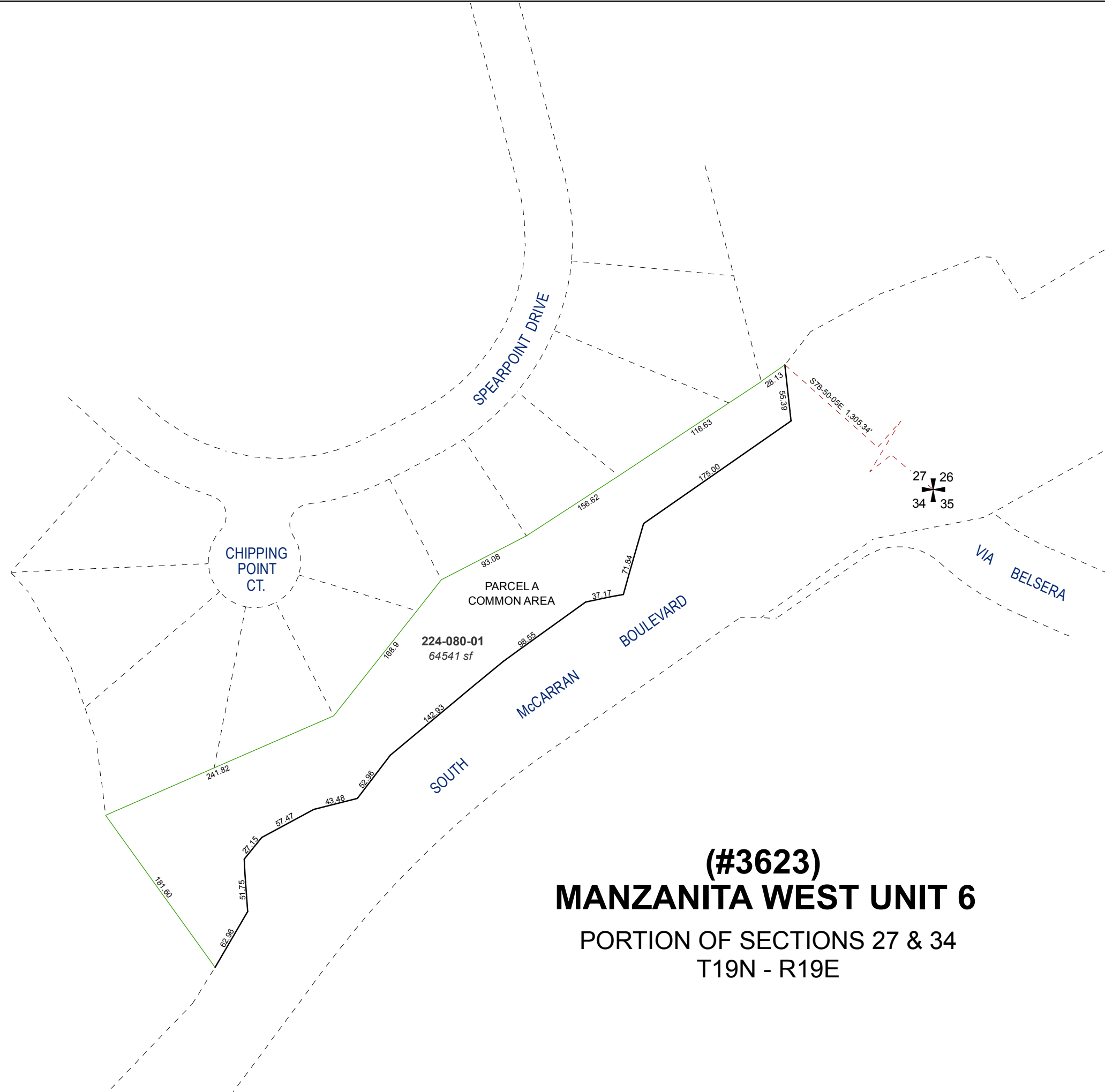
created by: KSB 7/12/2012

last updated: \_\_\_\_\_

area previously shown on map(s)

023-26

NOTE: This map was prepared for the use of the Washoe County Assessor for assessment and illustrative purposes only. It does not represent a survey of the premises. No liability is assumed as to the sufficiency or accuracy of the data delineated hereon.



**(#3623)**  
**MANZANITA WEST UNIT 6**  
PORTION OF SECTIONS 27 & 34  
T19N - R19E