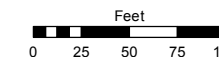
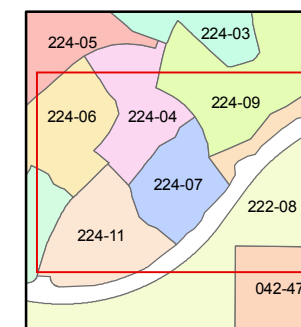
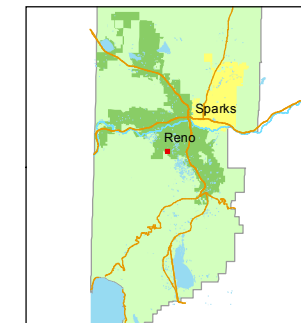


STATE OF NEVADA
WASHOE COUNTY
ASSESSOR'S OFFICE
Joshua G. Wilson, Assessor

1001 East Ninth Street
Building D
Reno, Nevada 89512
(775) 328-2231



1 inch = 100 feet



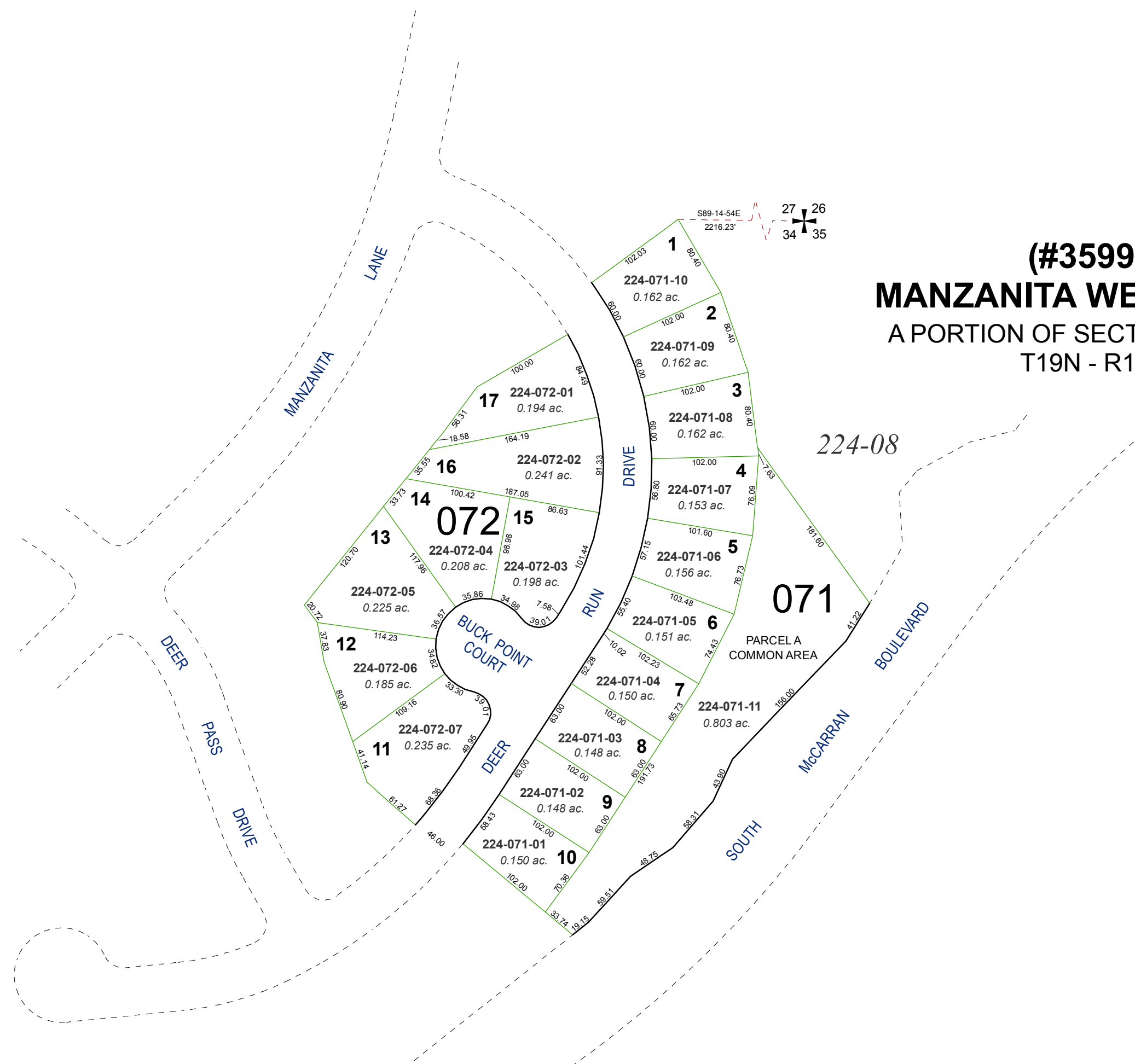
created by: KSB 7/11/2012

last updated: _____

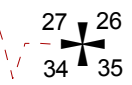
area previously shown on map(s)

023-26

NOTE: This map was prepared for the use of the Washoe County Assessor for assessment and illustrative purposes only. It does not represent a survey of the premises. No liability is assumed as to the sufficiency or accuracy of the data delineated hereon.



(#3599)
MANZANITA WEST UNIT 8
A PORTION OF SECTIONS 27 & 34
T19N - R19E



224-08

071

PARCELA COMMON AREA

SOUTH McCARRAN BOULEVARD

MANZANITA LANE

DEER PASS DRIVE

BUCK POINT COURT

DEER RUN DRIVE

072

- 1 224-071-10 0.162 ac.
- 2 224-071-09 0.162 ac.
- 3 224-071-08 0.162 ac.
- 4 224-071-07 0.153 ac.
- 5 224-071-06 0.156 ac.
- 6 224-071-05 0.151 ac.
- 7 224-071-04 0.150 ac.
- 8 224-071-03 0.148 ac.
- 9 224-071-02 0.148 ac.
- 10 224-071-01 0.150 ac.
- 11 224-072-07 0.235 ac.
- 12 224-072-06 0.185 ac.
- 13 224-072-05 0.225 ac.
- 14 224-072-04 0.208 ac.
- 15 224-072-03 0.198 ac.
- 16 224-072-02 0.241 ac.
- 17 224-072-01 0.194 ac.