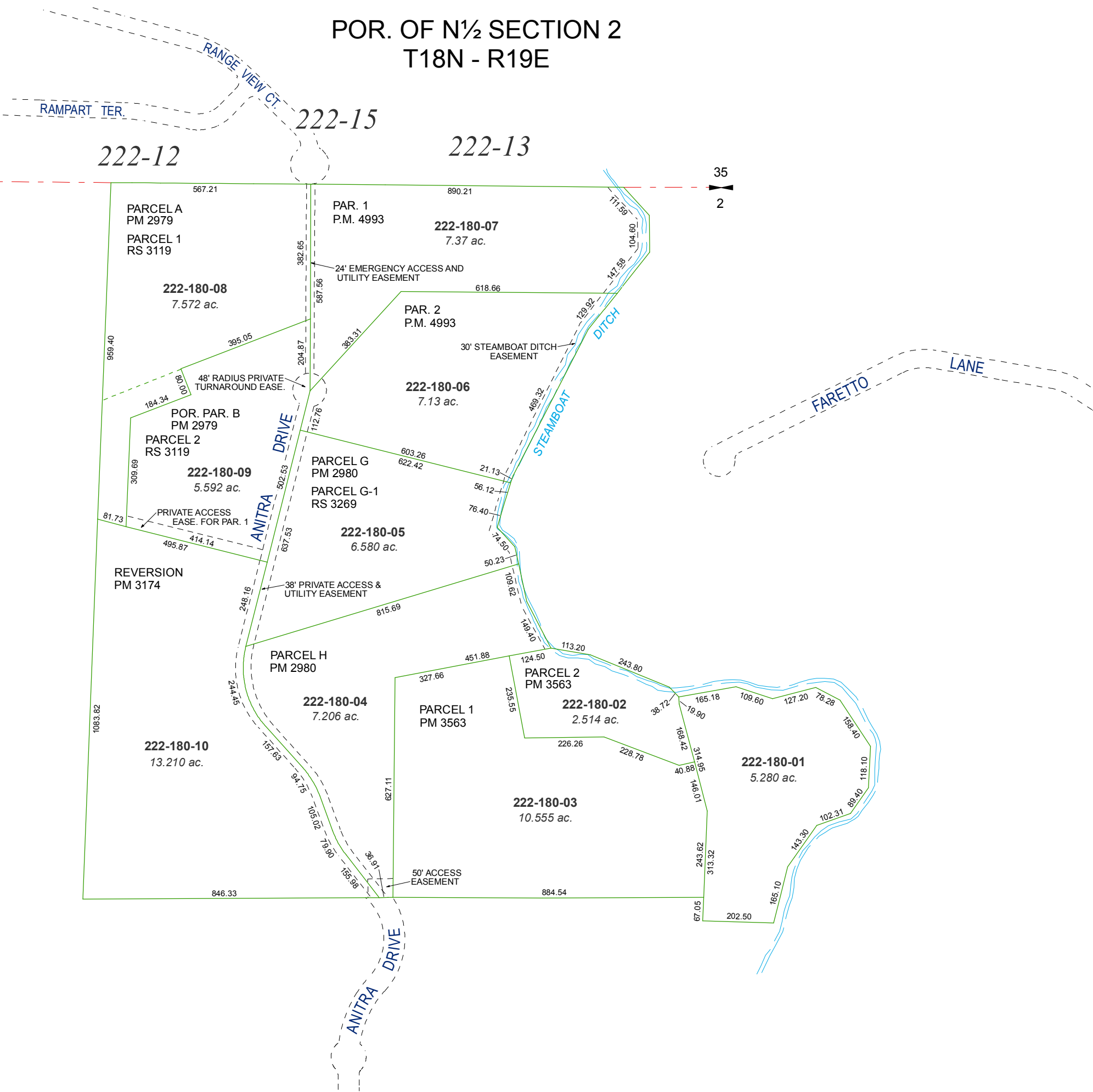
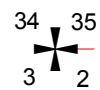


POR. OF N½ SECTION 2
T18N - R19E

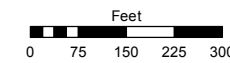


Assessor's Map Number

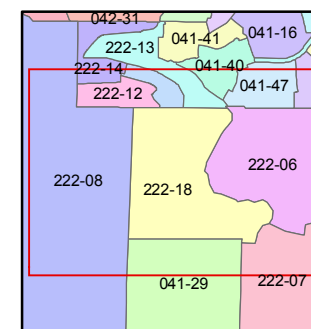
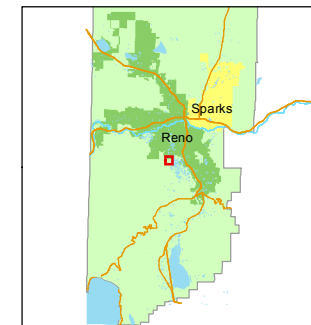
222-18

STATE OF NEVADA
WASHOE COUNTY
ASSESSOR'S OFFICE
Joshua G. Wilson, Assessor

1001 East Ninth Street
Building D
Reno, Nevada 89512
(775) 328-2231



1 inch = 300 feet



created by: KSB 8/14/2012

last updated: _____

area previously shown on map(s)

041-11

NOTE: This map was prepared for the use of the Washoe County Assessor for assessment and illustrative purposes only. It does not represent a survey of the premises. No liability is assumed as to the sufficiency or accuracy of the data delineated hereon.