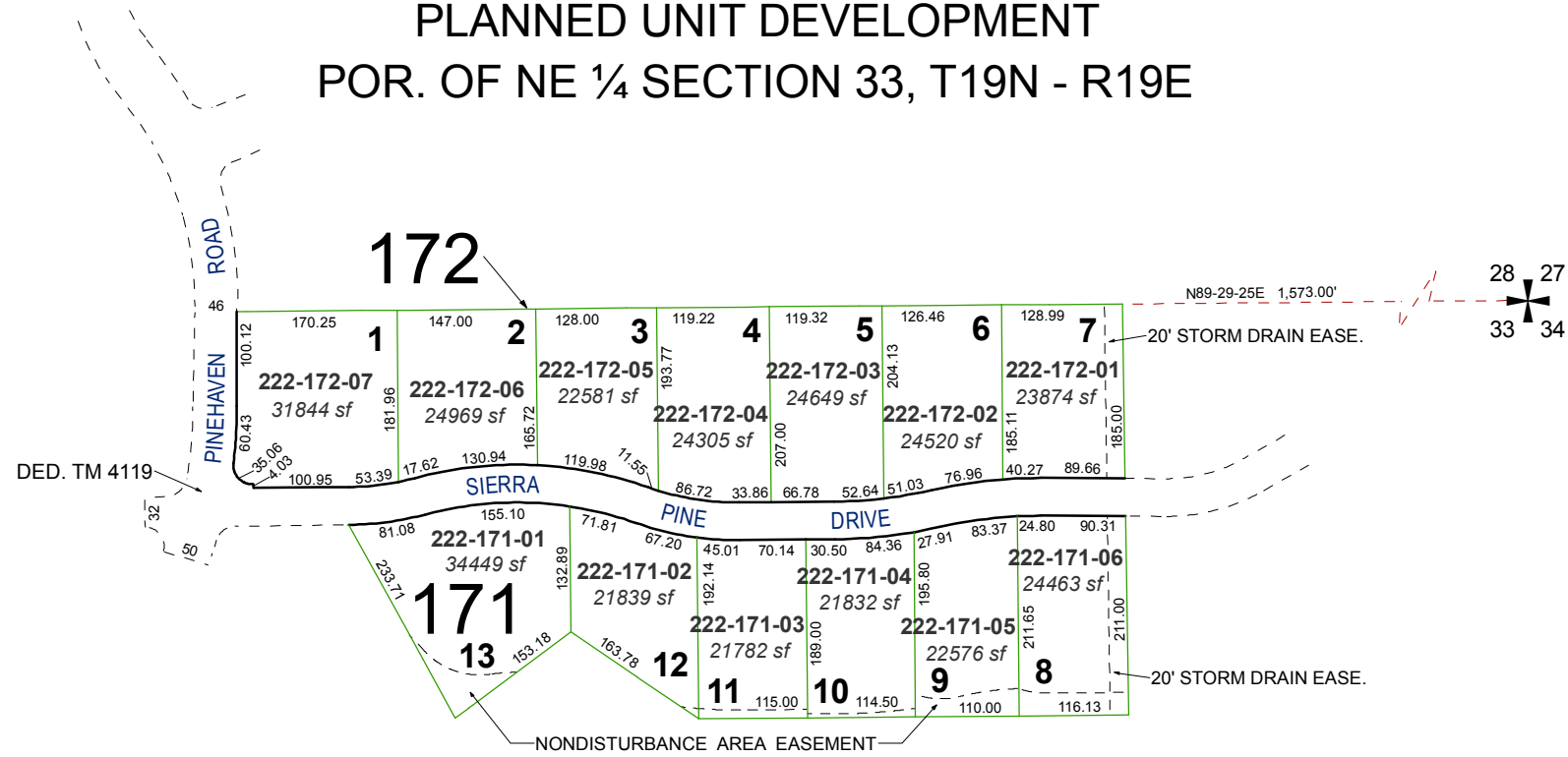


QUAIL VALLEY IN THE PINES PHASE 1 (#4244)

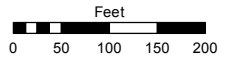
PLANNED UNIT DEVELOPMENT
POR. OF NE ¼ SECTION 33, T19N - R19E



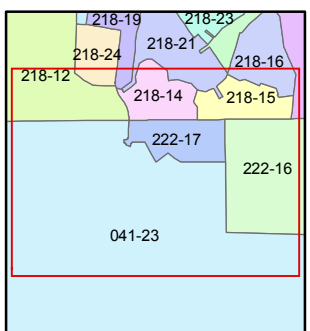
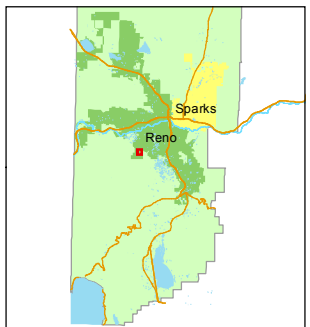
Assessor's Map Number
222-17

STATE OF NEVADA
WASHOE COUNTY
ASSESSOR'S OFFICE
Joshua G. Wilson, Assessor

1001 East Ninth Street
Building D
Reno, Nevada 89512
(775) 328-2231



1 inch = 200 feet



created by: KSB 7/25/2012

last updated: _____

area previously shown on map(s)

041-23

NOTE: This map was prepared for the use of the Washoe County Assessor for assessment and illustrative purposes only. It does not represent a survey of the premises. No liability is assumed as to the sufficiency or accuracy of the data delineated hereon.