

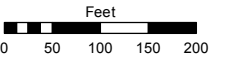
**(#4130)**  
**WHISPERING PINES SUBDIVISION**  
 A PLANNED UNIT DEVELOPMENT AT THE CAUGHLIN RANCH  
 PORTION OF NE 1/4 OF SECTION 33, T19N - R19E

Assessor's Map Number

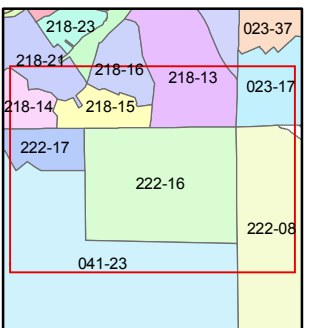
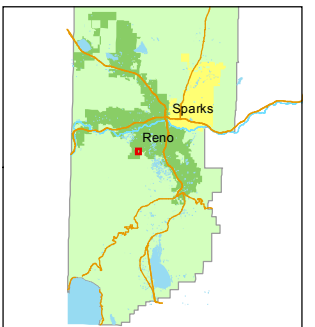
**222-16**

STATE OF NEVADA  
**WASHOE COUNTY**  
**ASSESSOR'S OFFICE**  
 Joshua G. Wilson, Assessor

1001 East Ninth Street  
 Building D  
 Reno, Nevada 89512  
 (775) 328-2231



1 inch = 200 feet



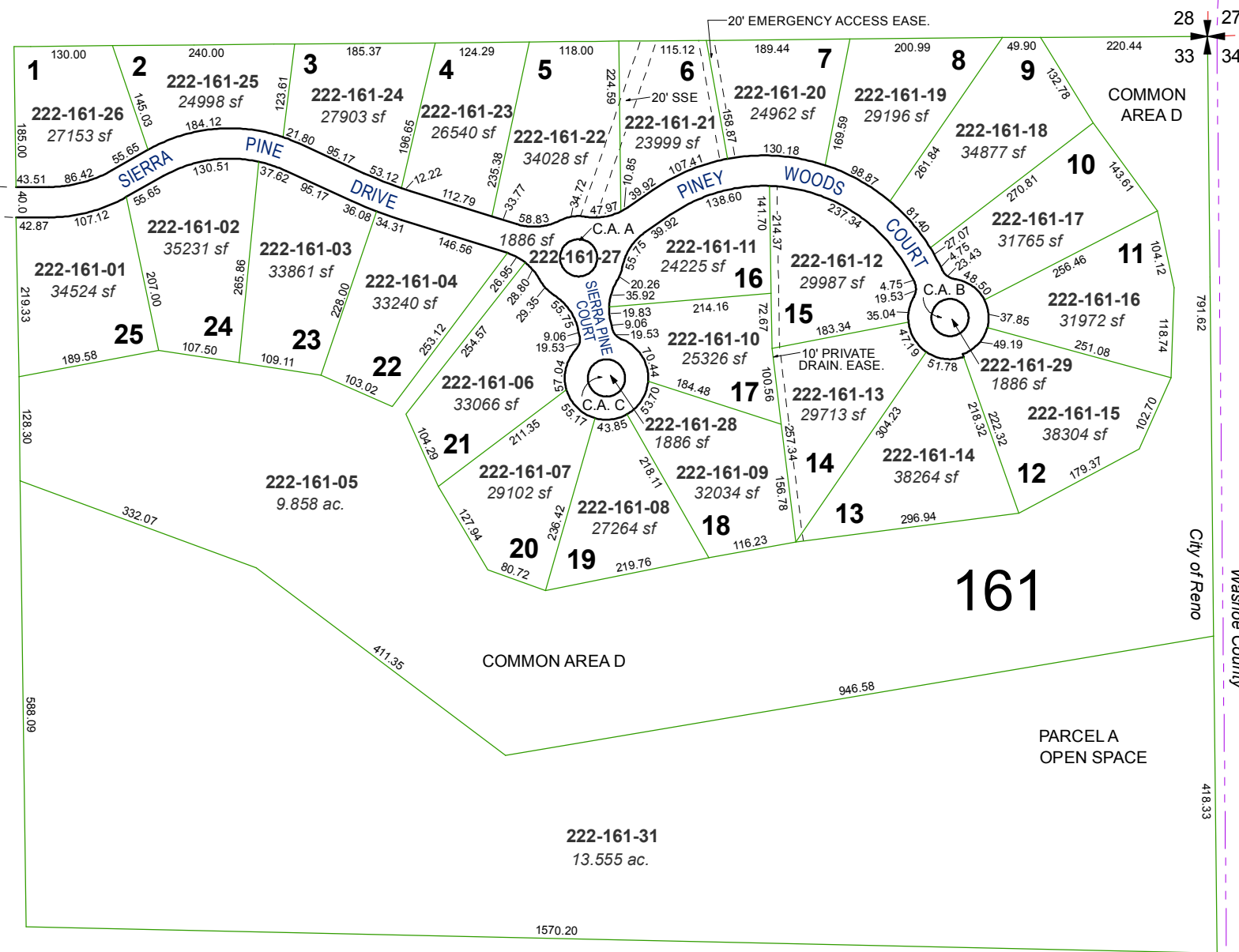
created by: KSB 7/25/2012

last updated: \_\_\_\_\_

area previously shown on map(s)

041-23

NOTE: This map was prepared for the use of the Washoe County Assessor for assessment and illustrative purposes only. It does not represent a survey of the premises. No liability is assumed as to the sufficiency or accuracy of the data delineated hereon.



C.A. = COMMON AREA

222-17

161

City of Reno  
 Washoe County