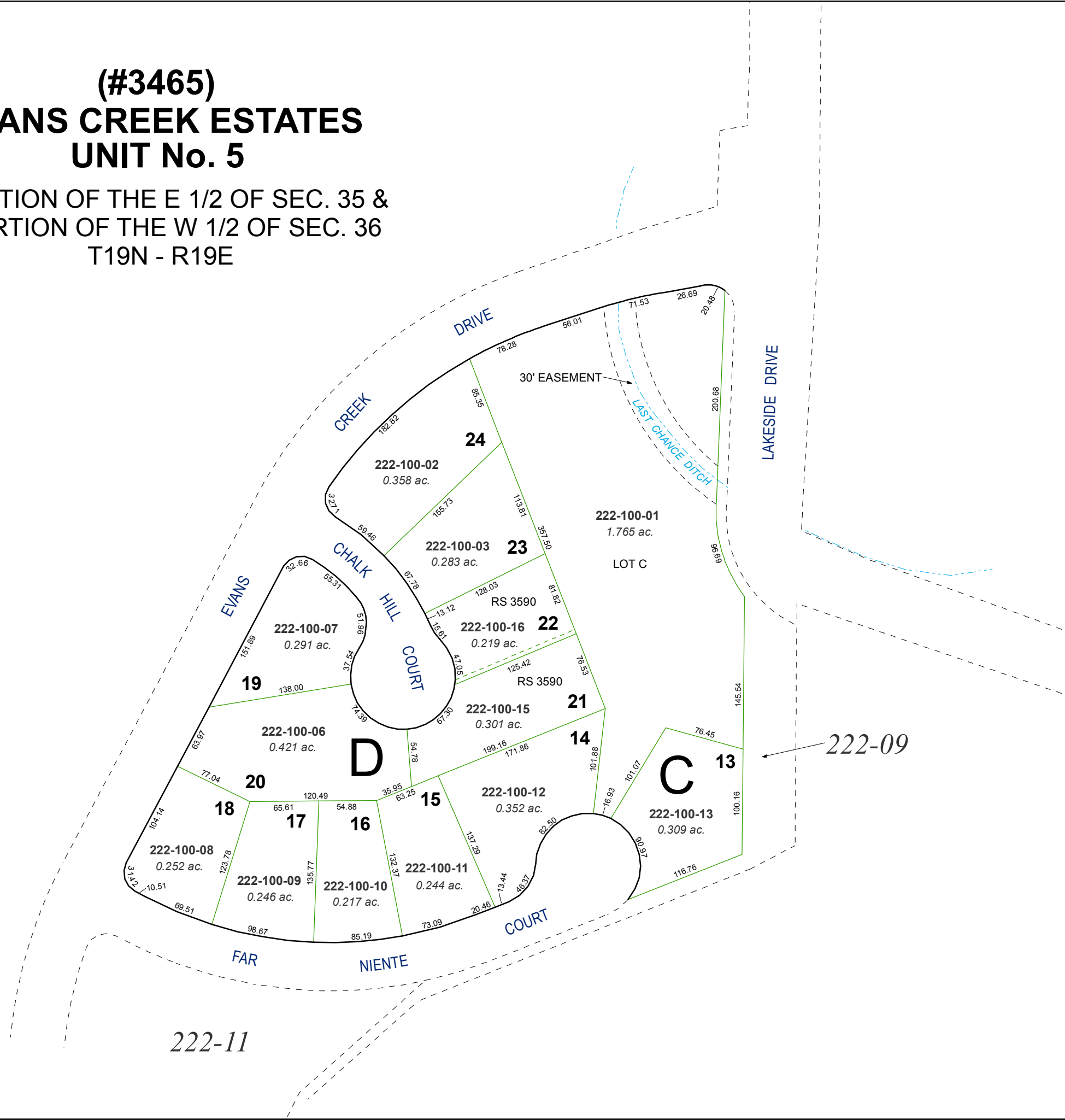


**(#3465)
EVANS CREEK ESTATES
UNIT No. 5**

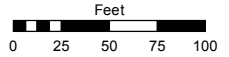
A PORTION OF THE E 1/2 OF SEC. 35 &
A PORTION OF THE W 1/2 OF SEC. 36
T19N - R19E



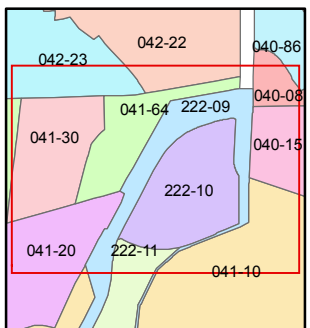
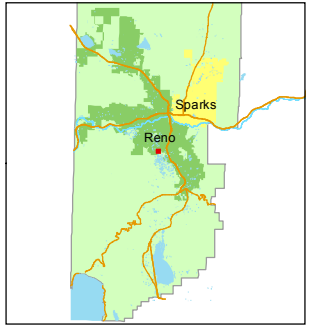
Assessor's Map Number
222-10

STATE OF NEVADA
WASHOE COUNTY
ASSESSOR'S OFFICE
Joshua G. Wilson, Assessor

1001 East Ninth Street
Building D
Reno, Nevada 89512
(775) 328-2231



1 inch = 100 feet



created by: KSB 7/23/2012

last updated: _____

area previously shown on map(s)
041-10

NOTE: This map was prepared for the use of the Washoe County Assessor for assessment and illustrative purposes only. It does not represent a survey of the premises. No liability is assumed as to the sufficiency or accuracy of the data delineated hereon.