

NGS STATION "VISTA 2"  
N 14,866,632.740  
E 2,310,289.914

VILLAGE GREEN PARKWAY

FYVIE COURT

PINEHAVEN ROAD

N66-35-37E  
48421.84'

218-19

ABERFELDY ROAD

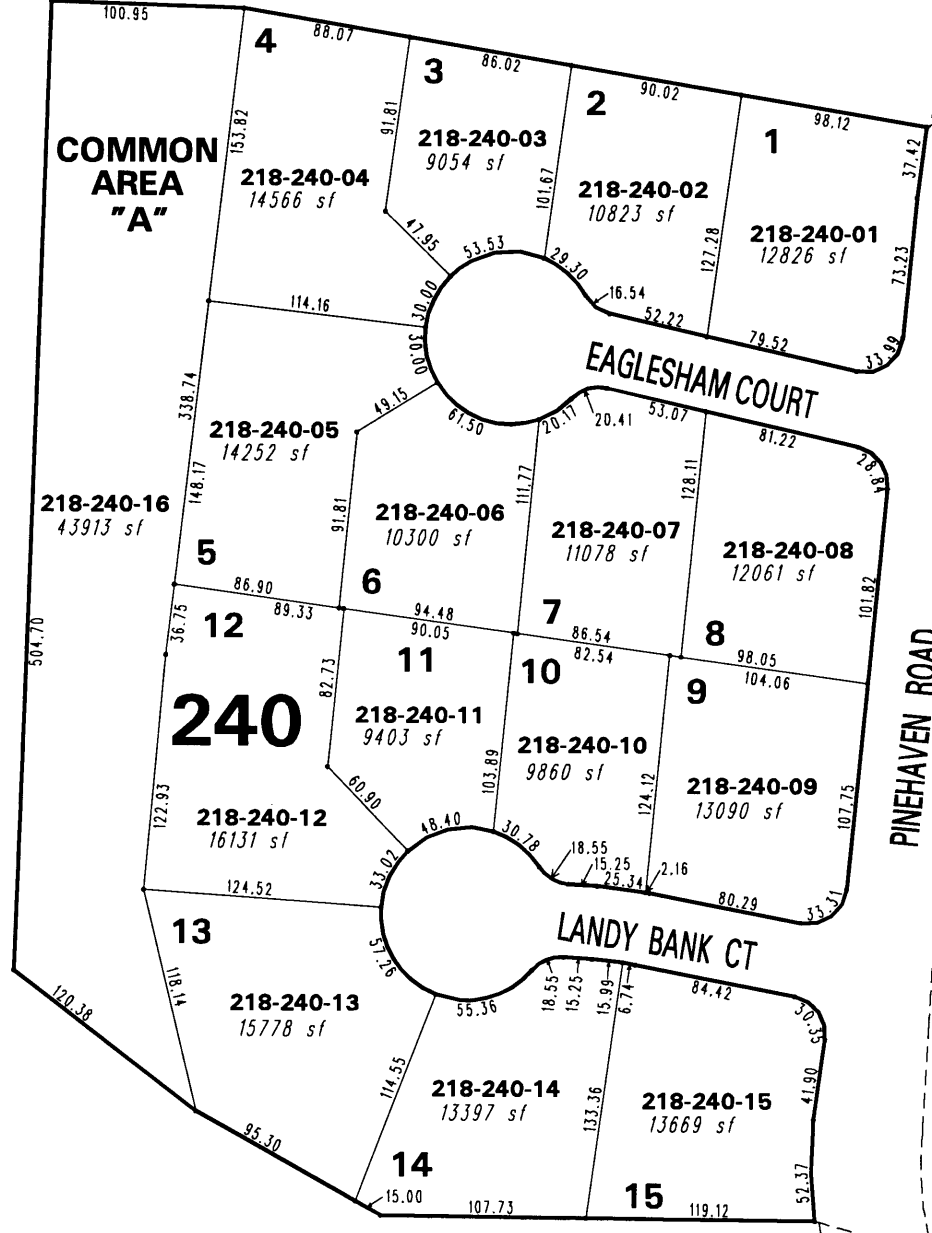
COMMON AREA "A"

(#3985)

**CASTLE RIDGE UNIT NO. 7**

PORTION OF THE S 1/2 OF SECTION 28  
T19N - R19E

218-12



218-19



1" = 100'



NGS STATION "TRUCKEE"  
N 14,835,623.728  
E 2,306,831.515

S74-43-08E  
42537.06'

This area previously shown on 218-12

NOTE: This map is prepared for the use of the Washoe County Assessor for assessment and illustrative purposes only. It does not represent a survey of the premises. No liability is assumed as to the sufficiency or the accuracy of the data delineated hereon.

Office of Washoe County Assessor, Nevada - Robert W. McGowan

NOTE: Areas of parcels which are less than 2 acres are shown in square feet.

Drawn by	HCS 8/13/01
Revised	HCS 6/4/02 KSB 2/14/03