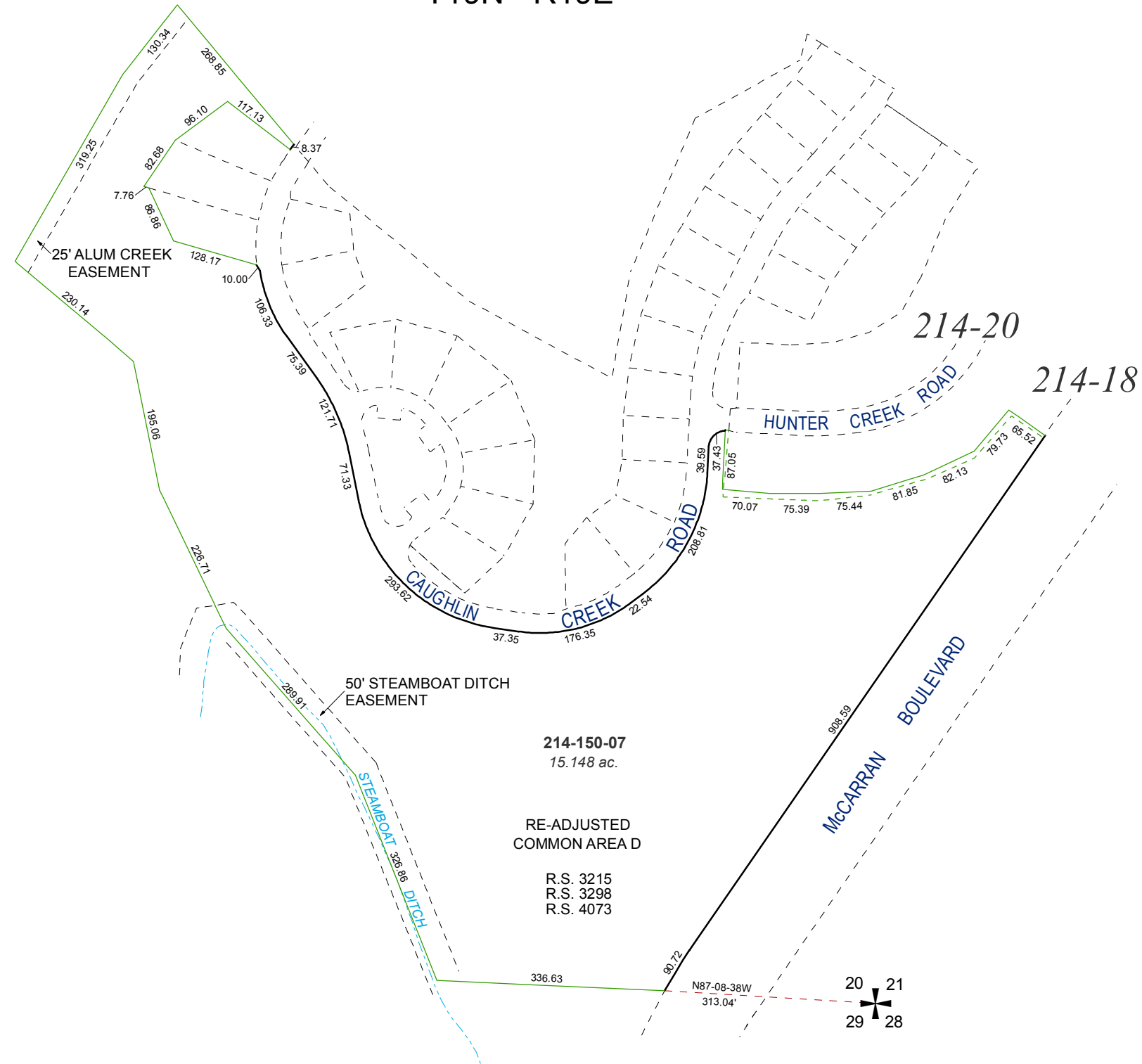


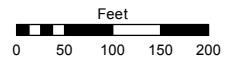
(#3265)
CAUGHLIN CREEK UNIT 4
 PORTION OF W 1/2 SECTION 21 &
 PORTION OF SE 1/4 SECTION 20
 T19N - R19E



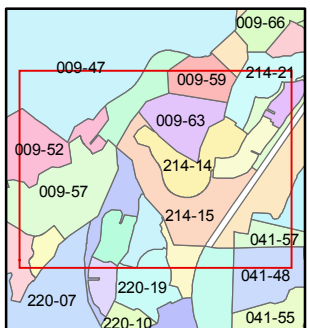
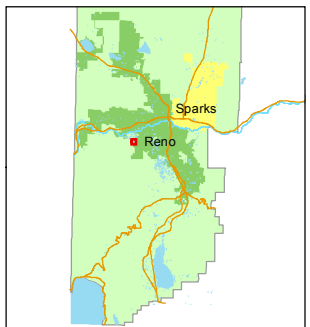
Assessor's Map Number
214-15

STATE OF NEVADA
WASHOE COUNTY
ASSESSOR'S OFFICE
 Joshua G. Wilson, Assessor

1001 East Ninth Street
 Building D
 Reno, Nevada 89512
 (775) 328-2231



1 inch = 200 feet



created by: EG 10/4/2013

last updated: _____

area previously shown on map(s)

214-01

NOTE: This map was prepared for the use of the Washoe County Assessor for assessment and illustrative purposes only. It does not represent a survey of the premises. No liability is assumed as to the sufficiency or accuracy of the data delineated hereon.