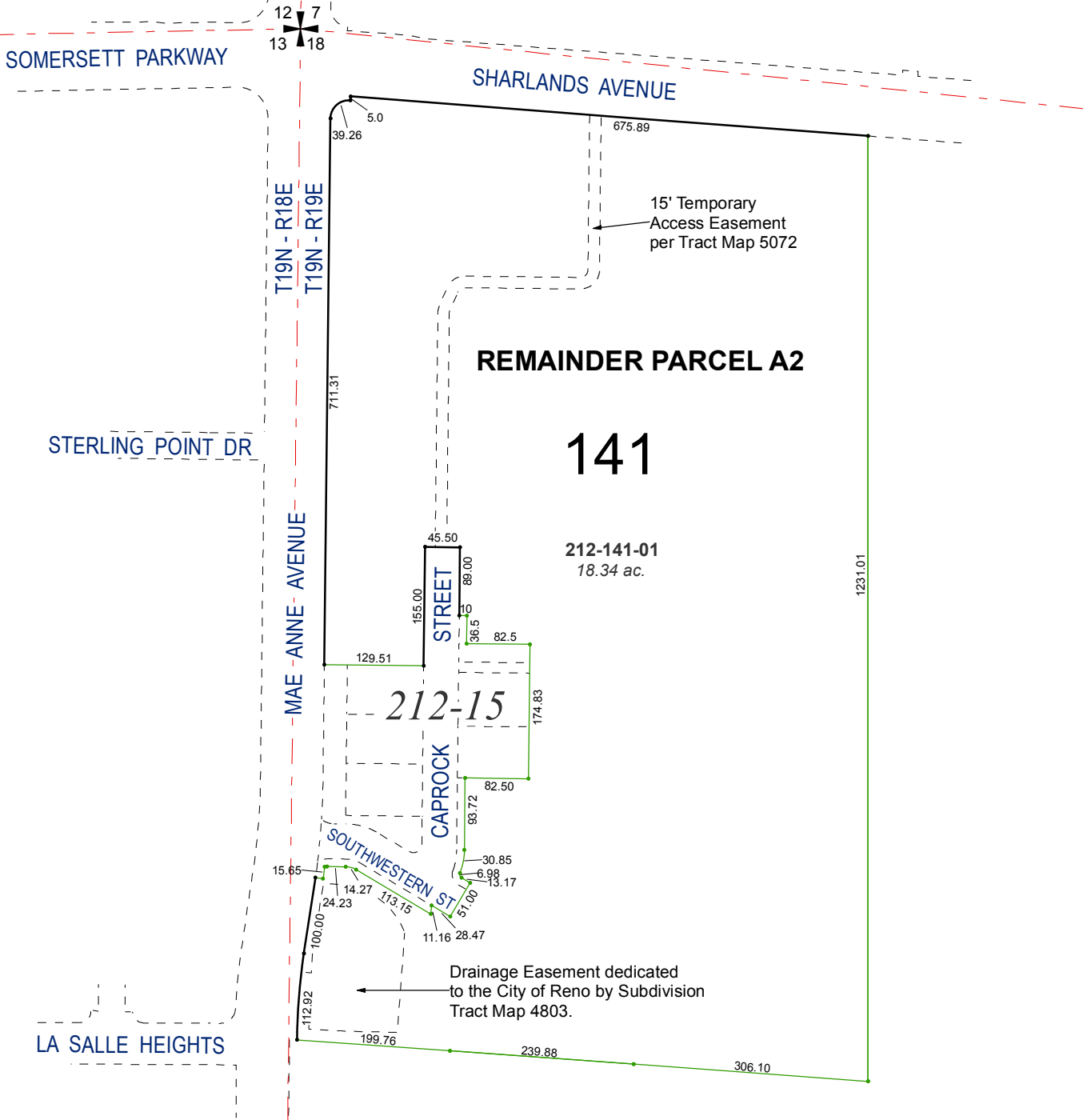


(#5072)
SHARLANDS PLANNING UNIT 1- PHASE 1

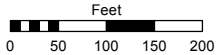
A COMMON INTEREST COMMUNITY
 A POR. OF THE NW 1/4 OF SEC. 18
 T19N - R19E



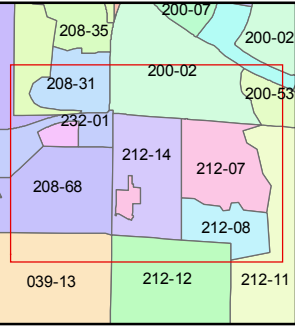
Assessor's Map Number
212-14

STATE OF NEVADA
WASHOE COUNTY
ASSESSOR'S OFFICE
 Joshua G. Wilson, Assessor

1001 East Ninth Street
 Building D
 Reno, Nevada 89512
 (775) 328-2231



1 inch = 200 feet



created by: CFB 05/06/2014

last updated: CFB 05/16/2014

area previously shown on map(s)
212-09

NOTE: This map was prepared for the use of the Washoe County Assessor for assessment and illustrative purposes only. It does not represent a survey of the premises. No liability is assumed as to the sufficiency or accuracy of the data delineated hereon.