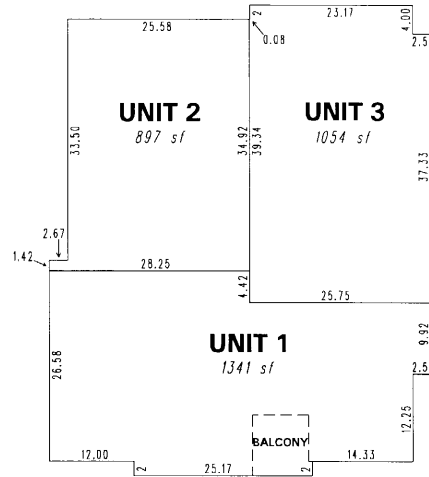
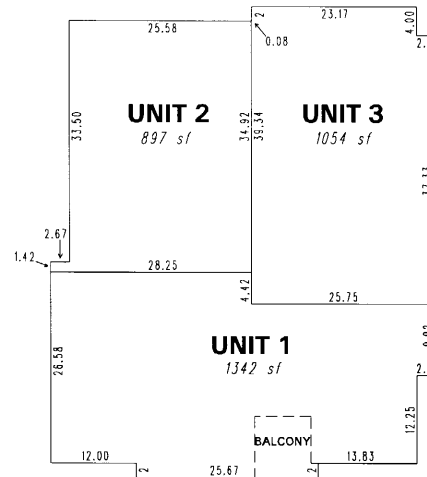


TYPE C - SECOND FLOOR



TYPE D - SECOND FLOOR

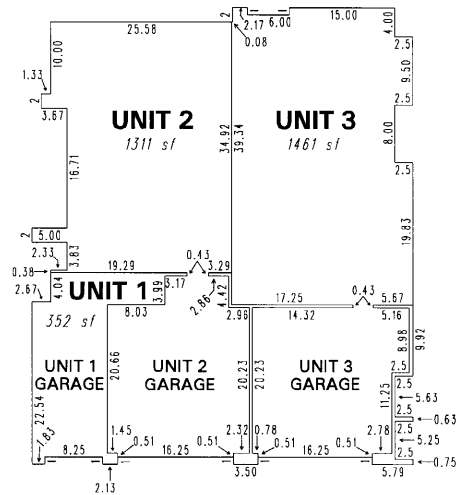


**REVERTED TO ACREAGE
PER REVERSION TRACT MAP 5069**

**(#4803)
SHARLANDS PLANNING, UNIT 1
VILLA TOSCANA
A COMMON INTEREST COMMUNITY**

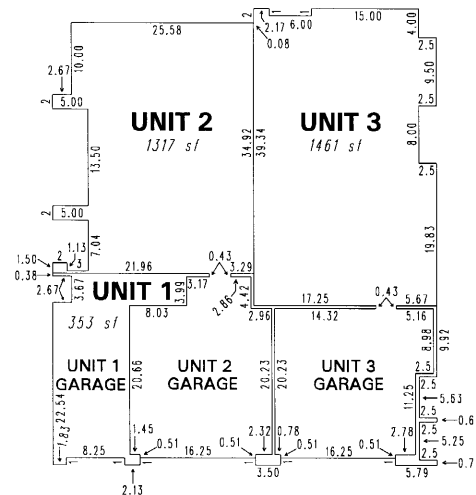
**A POR. OF THE NW 1/4 OF SEC. 18
T19N - R19E**

TYPE C - FIRST FLOOR



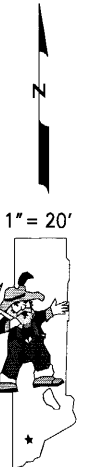
TYPE C TOTAL AREAS:
UNIT 1 = 1693 sf
UNIT 2 = 2208 sf
UNIT 3 = 2515 sf

TYPE D - FIRST FLOOR



TYPE D TOTAL AREAS:
UNIT 1 = 1695 sf
UNIT 2 = 2214 sf
UNIT 3 = 2515 sf

SOME BUILDINGS MAY BE REVERSED - THESE WILL BE DENOTED WITH AN "R"



NOTE: This map is prepared for the use of the Washoe County Assessor for assessment and illustrative purposes only. It does not represent a survey of the premises. No liability is assumed as to the sufficiency or the accuracy of the data delineated hereon.

Office of Washoe County Assessor, Nevada - Joshua G. Wilson

This area previously shown on 039-11

NOTE: Areas of parcels which are less than 2 acres are shown in square feet.

Drawn by NLH 07/18/07
Revised _____