

Assessor's Map Number

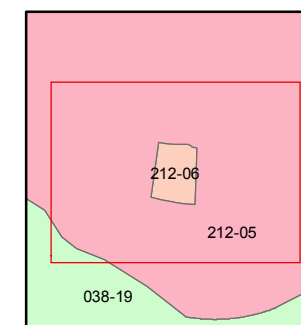
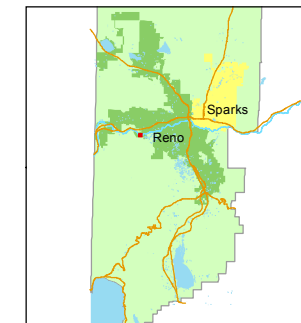
212-06

STATE OF NEVADA
WASHOE COUNTY
ASSESSOR'S OFFICE
Joshua G. Wilson, Assessor

1001 East Ninth Street
Building D
Reno, Nevada 89512
(775) 328-2231



1 inch = 80 feet



created by: CFB 01/29/2014

last updated: _____

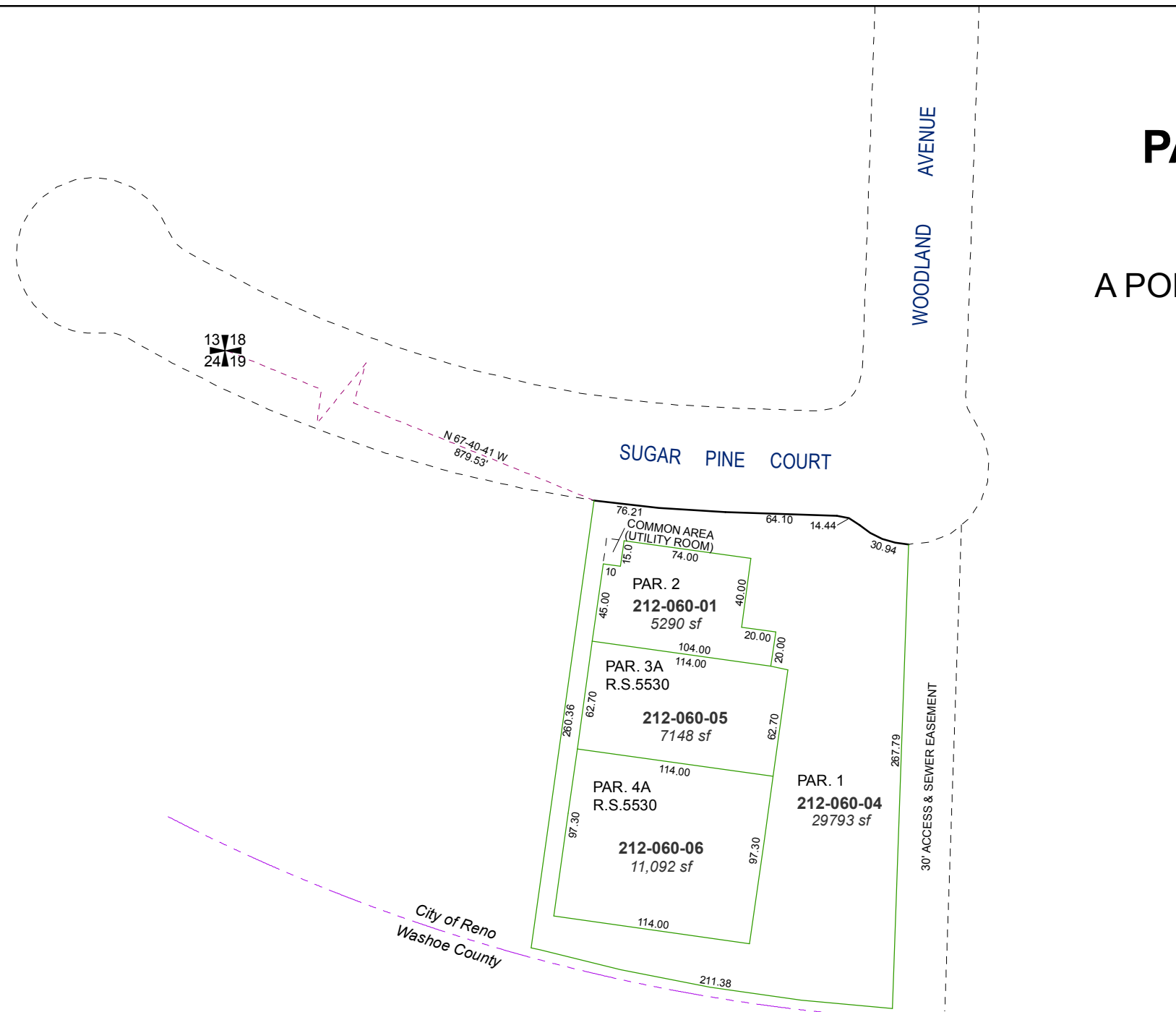
area previously shown on map(s)

NOTE: This map was prepared for the use of the Washoe County Assessor for assessment and illustrative purposes only. It does not represent a survey of the premises. No liability is assumed as to the sufficiency or accuracy of the data delineated hereon.

CONDOMINIUM PARCEL MAP #4494

LOT 12 OF BLOCK C OF
TRACT MAP #2771

A POR. OF THE NW ¼ OF SEC. 19
T19N - R19E



13 18
24 19

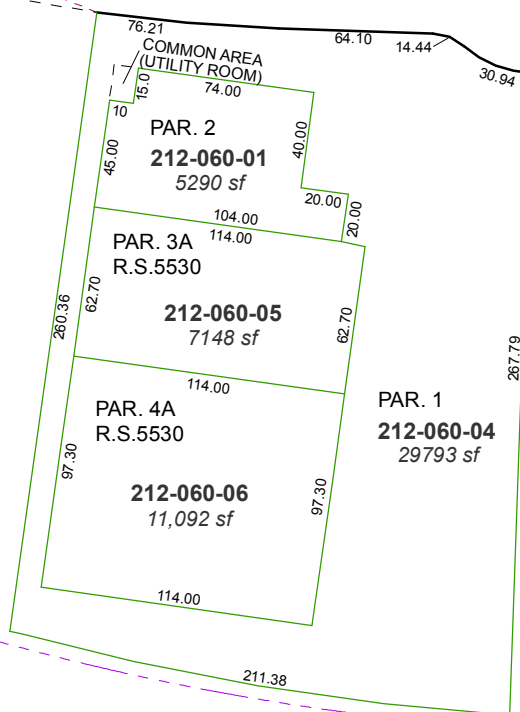
N.67-40-41 W.
879.53'

SUGAR PINE COURT

WOODLAND AVENUE

30' ACCESS & SEWER EASEMENT

City of Reno
Washoe County



COMMON AREA
(UTILITY ROOM)

PAR. 2
212-060-01
5290 sf

PAR. 3A
R.S.5530
212-060-05
7148 sf

PAR. 4A
R.S.5530
212-060-06
11,092 sf

PAR. 1
212-060-04
29793 sf