

PORTIONS OF SECTIONS 13 & 24
T19N - R18E

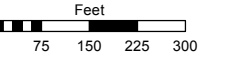
PORTIONS OF SECTIONS 18 & 19
T19N - R19E

Assessor's Map Number

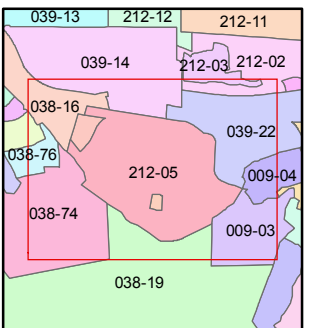
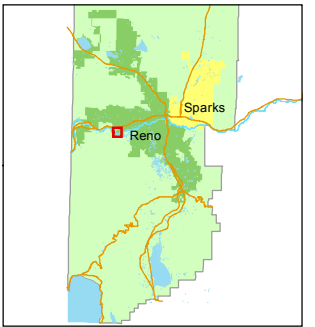
212-05

STATE OF NEVADA
WASHOE COUNTY
ASSESSOR'S OFFICE
Joshua G. Wilson, Assessor

1001 East Ninth Street
Building D
Reno, Nevada 89512
(775) 328-2231



1 inch = 300 feet



created by: NLH 11/17/2011

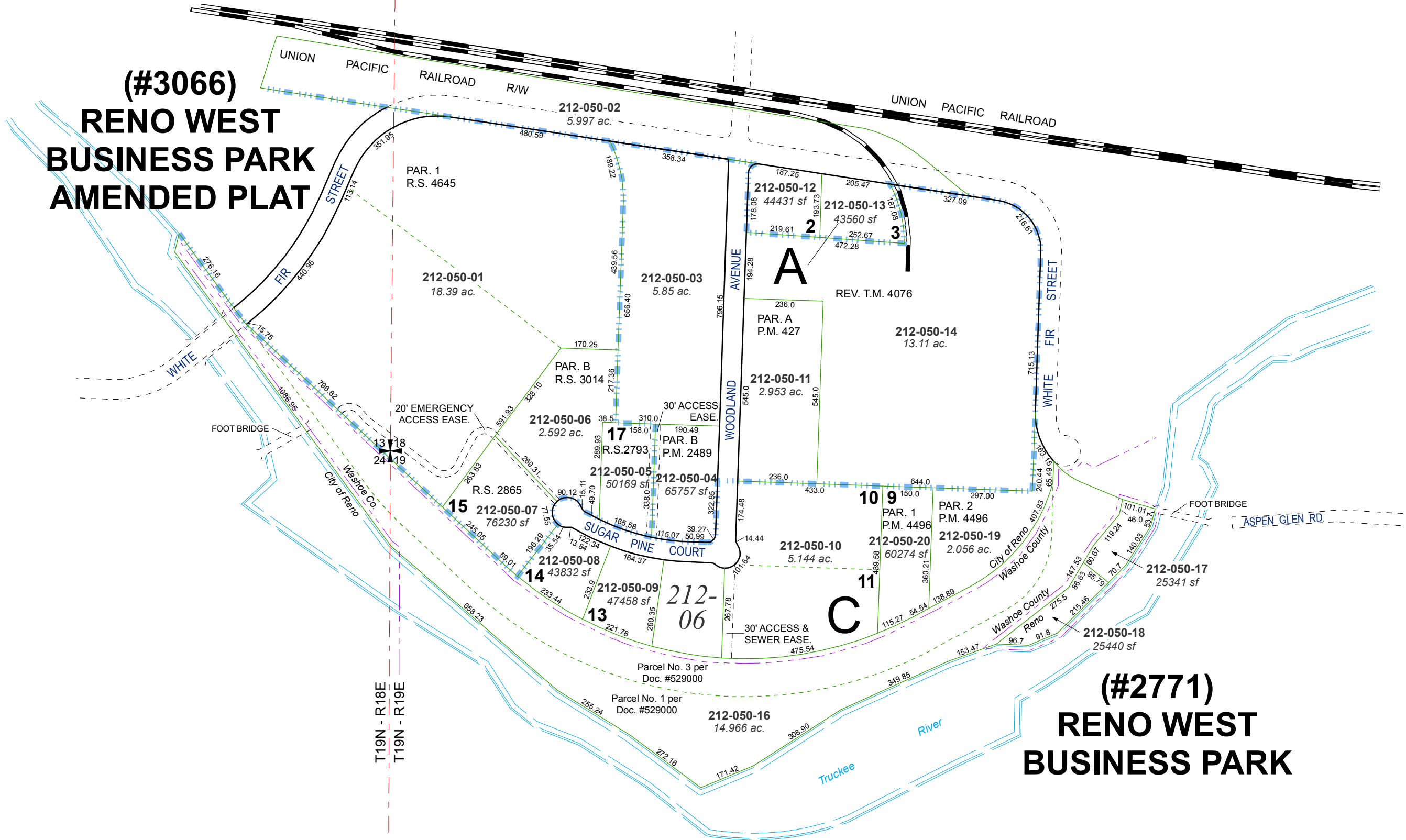
last updated: CFB 10/11/2013

area previously shown on map(s)
039-24

NOTE: This map was prepared for the use of the Washoe County Assessor for assessment and illustrative purposes only. It does not represent a survey of the premises. No liability is assumed as to the sufficiency or accuracy of the data delineated hereon.

(#3066) RENO WEST BUSINESS PARK AMENDED PLAT

(#2771) RENO WEST BUSINESS PARK



T19N - R18E
T19N - R19E