

204-01

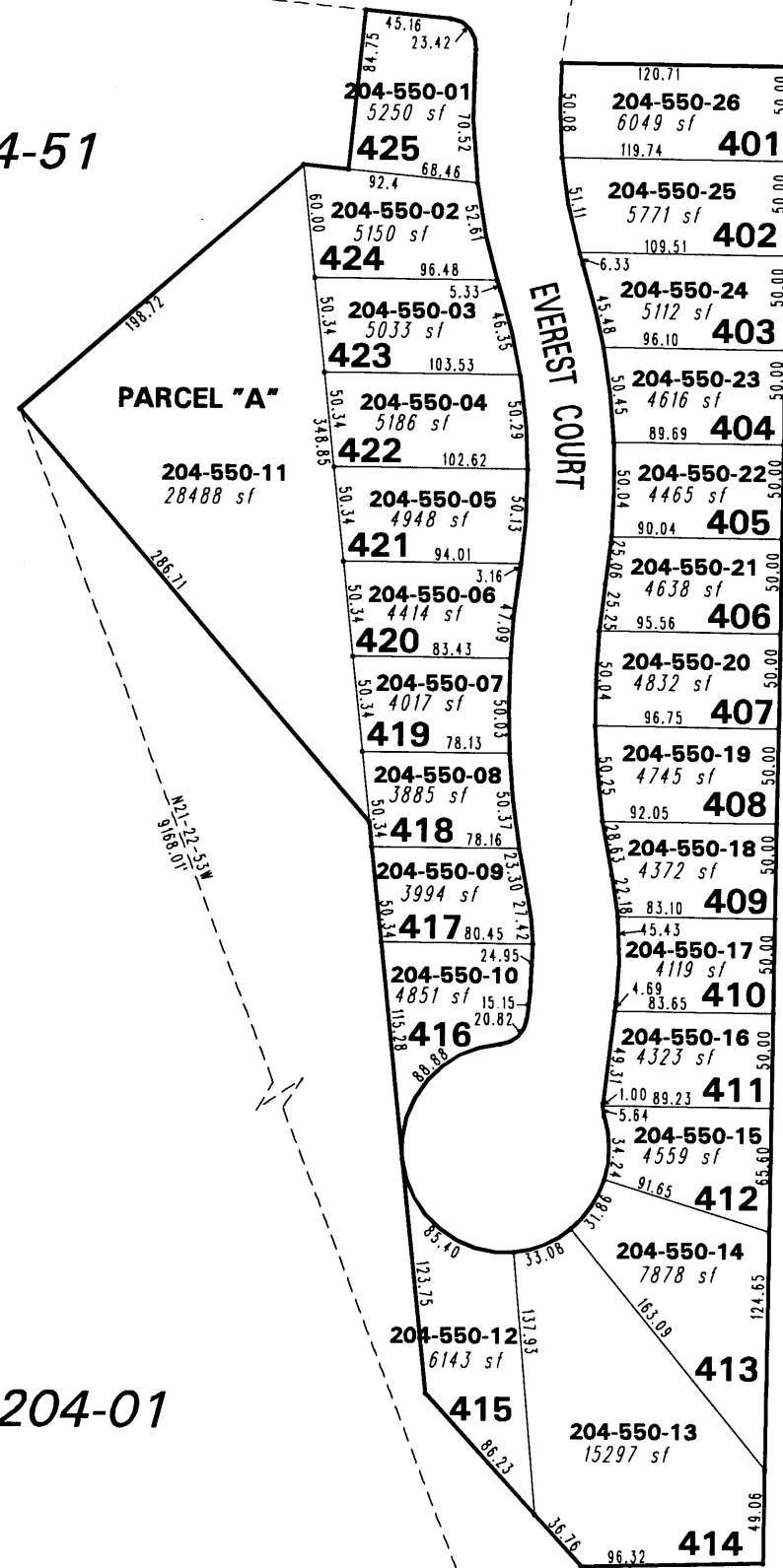
(#3996)

# OVERLOOK SUBDIVISION UNIT FOUR

POR. OF THE SE 1/4 SEC. 6  
T19N - R19E

204-51

204-51



204-01

204-01

WASHOE CO. GPS POINT  
"CHALKBLUFF"  
N 14,863,132.5044  
E 2,260,504.4884

WASHOE CO. GPS POINT  
"CHALKBLUFF"  
N 14,863,132.5044  
E 2,260,504.4884

This area previously shown on 204-01

NOTE: This map is prepared for the use of the Washoe County Assessor for assessment and illustrative purposes only. It does not represent a survey of the premises. No liability is assumed as to the sufficiency or the accuracy of the data delineated hereon.

Office of Washoe County Assessor, Nevada - Robert W. McGowan

NOTE: Areas of parcels which are less than 2 acres are shown in square feet.

Drawn by HCS 09/20/01  
Revised HCS 4/22/03 HCS 6/19/03

