

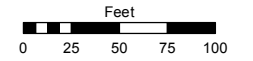
**(#4680)**  
**BRECKENRIDGE SUBDIVISION**  
 PORTION OF SE ¼ OF SECTION 8  
 T19N - R19E

Assessor's Map Number

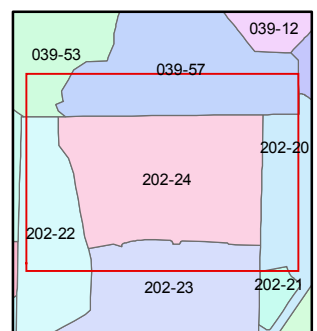
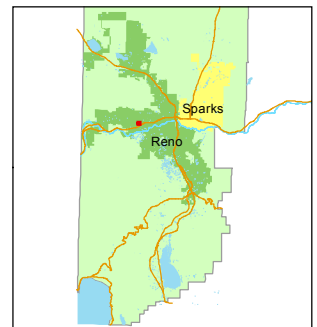
**202-24**

STATE OF NEVADA  
**WASHOE COUNTY**  
**ASSESSOR'S OFFICE**  
 Joshua G. Wilson, Assessor

1001 East Ninth Street  
 Building D  
 Reno, Nevada 89512  
 (775) 328-2231



1 inch = 100 feet



created by: EG 10/17/2013

last updated: \_\_\_\_\_

area previously shown on map(s)

39-78 & 202-16

NOTE: This map was prepared for the use of the Washoe County Assessor for assessment and illustrative purposes only. It does not represent a survey of the premises. No liability is assumed as to the sufficiency or accuracy of the data delineated hereon.

