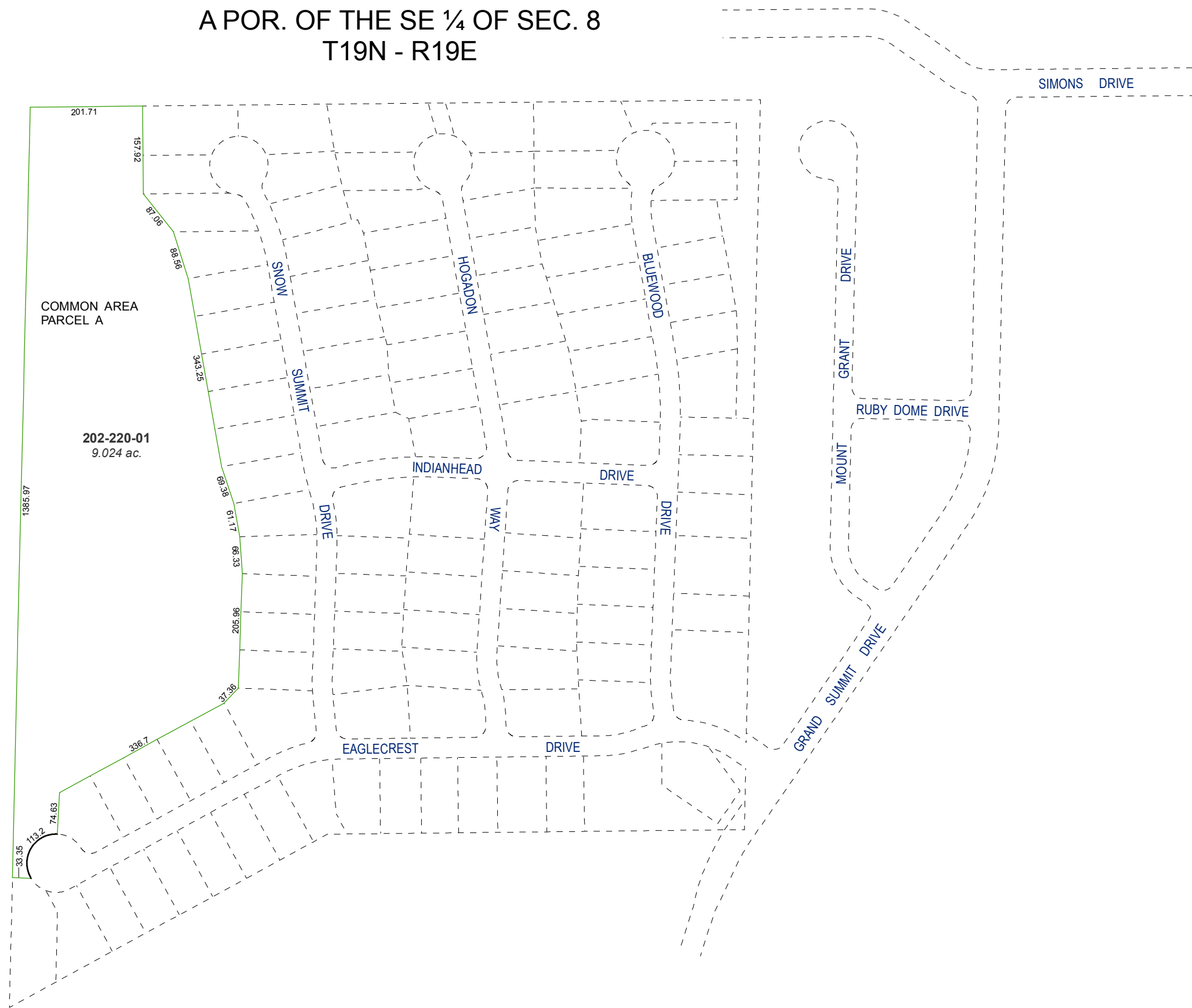


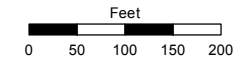
(#4680)
BRECKENRIDGE SUBDIVISION
 A POR. OF THE SE ¼ OF SEC. 8
 T19N - R19E



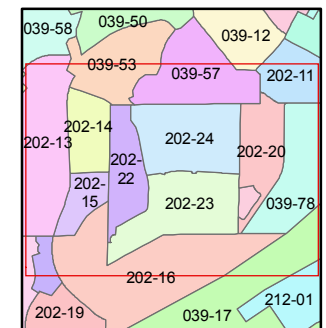
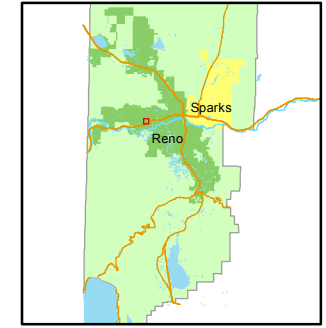
Assessor's Map Number
202-22

STATE OF NEVADA
WASHOE COUNTY
ASSESSOR'S OFFICE
 Joshua G. Wilson, Assessor

1001 East Ninth Street
 Building D
 Reno, Nevada 89512
 (775) 328-2231



1 inch = 200 feet



created by: NLH 02/10/2012

last updated: _____

area previously shown on map(s)
039-78 & 202-16

NOTE: This map was prepared for the use of the Washoe County Assessor for assessment and illustrative purposes only. It does not represent a survey of the premises. No liability is assumed as to the sufficiency or accuracy of the data delineated herein.