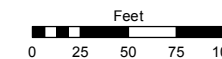
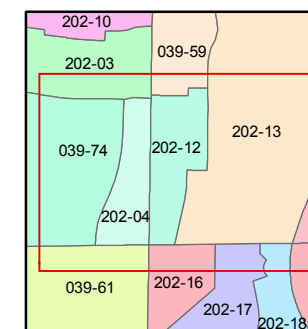
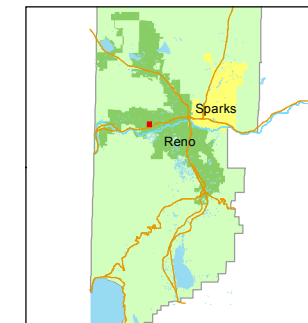


STATE OF NEVADA
WASHOE COUNTY
ASSESSOR'S OFFICE
Joshua G. Wilson, Assessor

1001 East Ninth Street
Building D
Reno, Nevada 89512
(775) 328-2231



1 inch = 100 feet



created by: EG 10/15/2013

last updated: _____

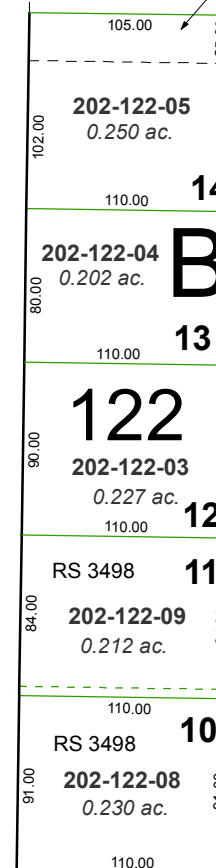
area previously shown on map(s)

039-19

NOTE: This map was prepared for the use of the Washoe County Assessor for assessment and illustrative purposes only. It does not represent a survey of the premises. No liability is assumed as to the sufficiency or accuracy of the data delineated hereon.

(#3487)
SIERRA HIGHLANDS UNIT 9C
PORTION OF SW ¼ SECTION 8
T19N - R19E

25' SANITARY SEWER EASEMENT



LINDSAY DRIVE

