

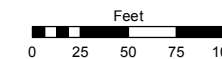
SUNCREST SUBDIVISION

PORTION OF W 1/2 SECTION 8, T19N - R19E

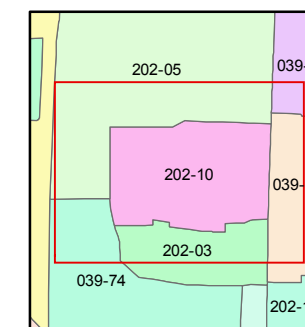
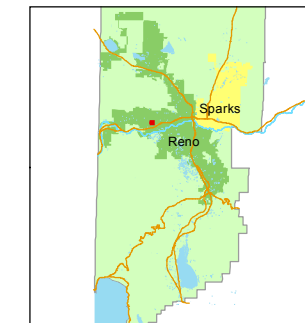
(#2909) UNIT NO. 2B

STATE OF NEVADA
WASHOE COUNTY
ASSESSOR'S OFFICE
Joshua G. Wilson, Assessor

1001 East Ninth Street
Building D
Reno, Nevada 89512
(775) 328-2231



1 inch = 100 feet



created by: EG 10/15/2013

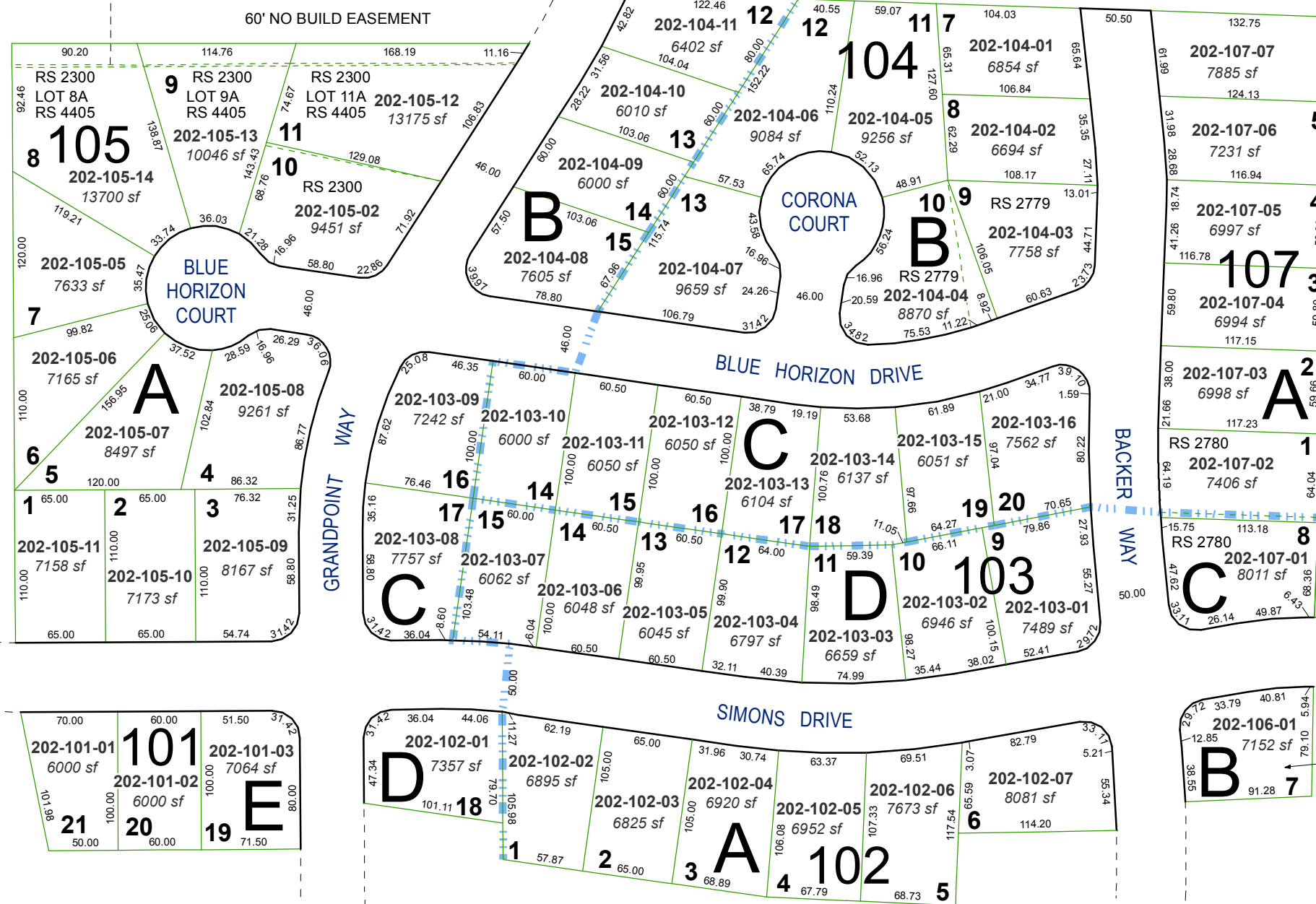
last updated: _____

area previously shown on map(s)

039-25

NOTE: This map was prepared for the use of the Washoe County Assessor for assessment and illustrative purposes only. It does not represent a survey of the premises. No liability is assumed as to the sufficiency or accuracy of the data delineated hereon.

(#2362) UNIT NO. 1



(#2746) UNIT NO. 2A