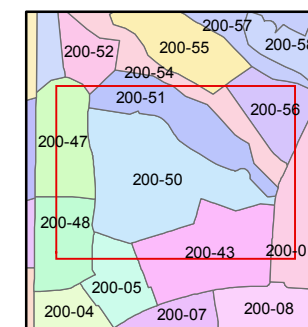
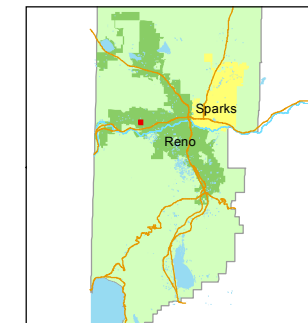


1 inch = 100 feet



created by: EG 11/12/2013

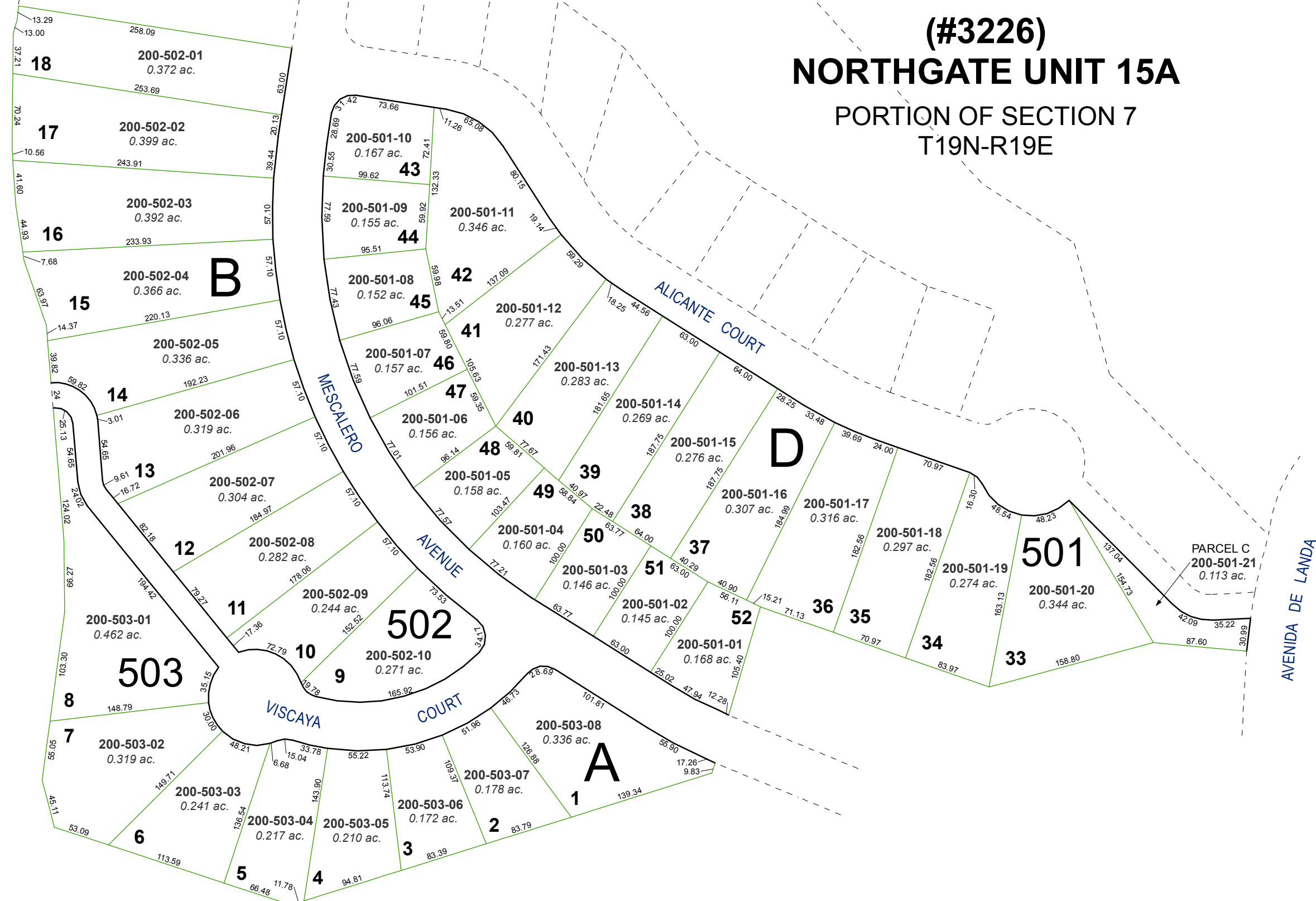
last updated: _____

area previously shown on map(s)

200-01

NOTE: This map was prepared for the use of the Washoe County Assessor for assessment and illustrative purposes only. It does not represent a survey of the premises. No liability is assumed as to the sufficiency or accuracy of the data delineated hereon.

(#3226)
NORTHGATE UNIT 15A
PORTION OF SECTION 7
T19N-R19E



18 200-502-01 0.372 ac.

17 200-502-02 0.399 ac.

16 200-502-03 0.392 ac.

15 200-502-04 0.366 ac.

14 200-502-05 0.336 ac.

13 200-502-06 0.319 ac.

12 200-502-07 0.304 ac.

11 200-502-08 0.282 ac.

10 200-502-09 0.244 ac.

9 200-502-10 0.271 ac.

8 200-503-01 0.462 ac.

7 200-503-02 0.319 ac.

6 200-503-03 0.241 ac.

5 200-503-04 0.217 ac.

4 200-503-05 0.210 ac.

3 200-503-06 0.172 ac.

2 200-503-07 0.178 ac.

1 200-503-08 0.336 ac.

43 200-501-10 0.167 ac.

44 200-501-09 0.155 ac.

42 200-501-08 0.152 ac.

41 200-501-12 0.277 ac.

40 200-501-06 0.156 ac.

39 200-501-05 0.158 ac.

38 200-501-04 0.160 ac.

37 200-501-16 0.307 ac.

36 200-501-17 0.316 ac.

35 200-501-18 0.297 ac.

34 200-501-19 0.274 ac.

33 200-501-20 0.344 ac.

32 200-501-15 0.276 ac.

31 200-501-14 0.269 ac.

30 200-501-13 0.283 ac.

29 200-501-12 0.277 ac.

28 200-501-11 0.346 ac.

27 200-501-10 0.167 ac.

26 200-501-09 0.155 ac.

25 200-501-08 0.152 ac.

24 200-501-07 0.157 ac.

23 200-501-06 0.156 ac.

22 200-501-05 0.158 ac.

21 200-501-04 0.160 ac.

20 200-501-03 0.146 ac.

19 200-501-02 0.145 ac.

18 200-501-01 0.168 ac.

17 200-501-16 0.307 ac.

16 200-501-17 0.316 ac.

15 200-501-18 0.297 ac.

14 200-501-19 0.274 ac.

13 200-501-20 0.344 ac.

12 200-501-15 0.276 ac.

11 200-501-14 0.269 ac.

10 200-501-13 0.283 ac.

9 200-501-12 0.277 ac.

8 200-501-11 0.346 ac.

7 200-501-10 0.167 ac.

6 200-501-09 0.155 ac.

5 200-501-08 0.152 ac.

4 200-501-07 0.157 ac.

3 200-501-06 0.156 ac.

2 200-501-05 0.158 ac.

1 200-501-04 0.160 ac.

501 200-501-21 0.113 ac.

Parcel C 200-501-21 0.113 ac.

B

D

A