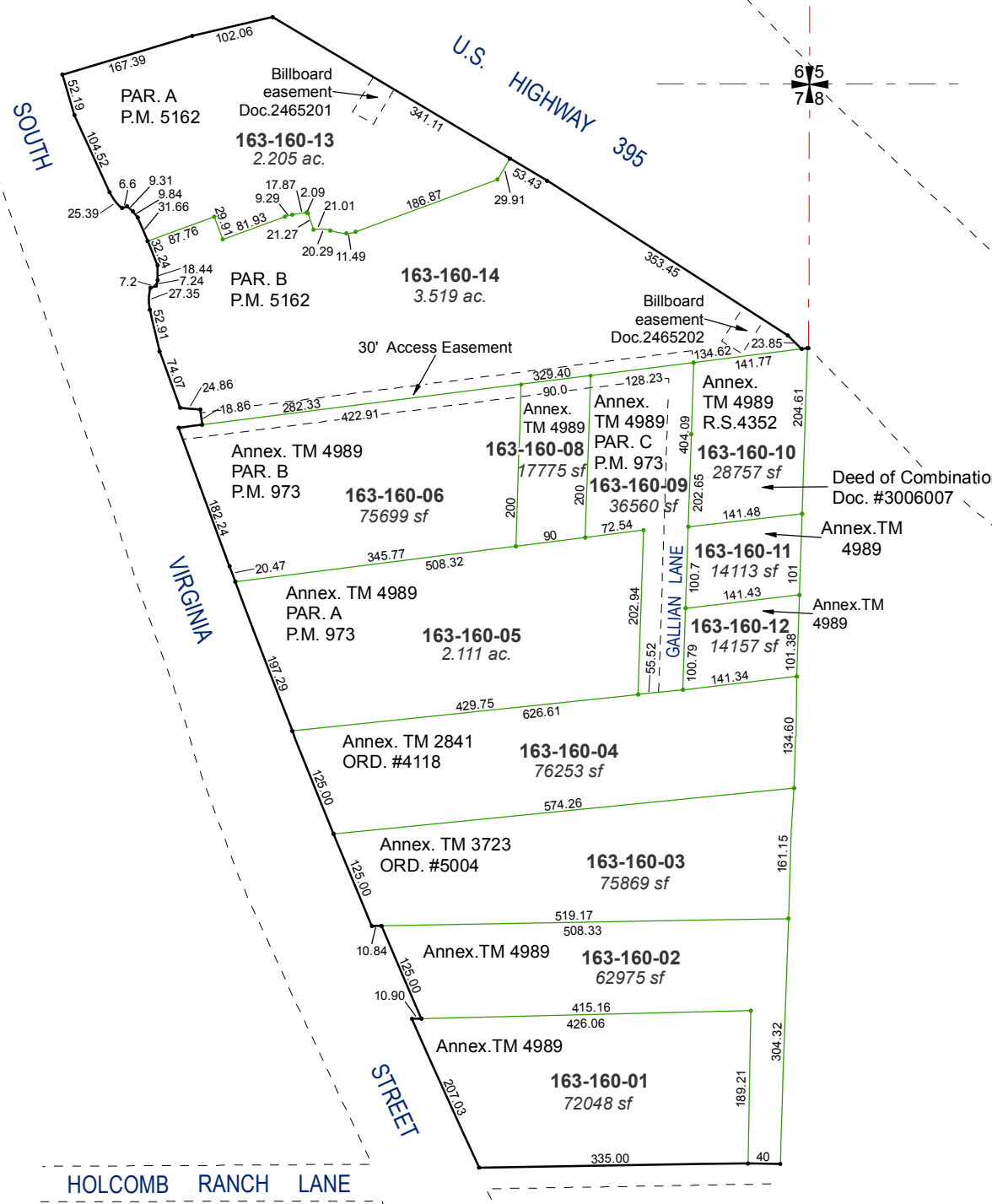


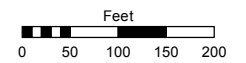
A PORTION OF SECTIONS 6, 7 & 8
T18N - R20E



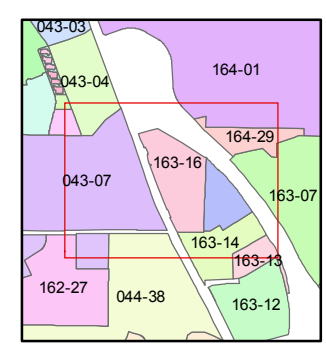
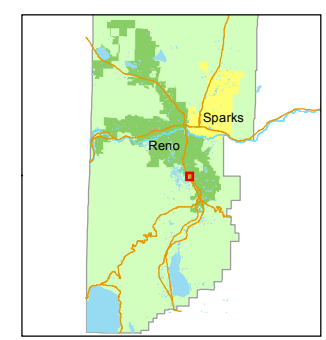
Assessor's Map Number
163-16

STATE OF NEVADA
WASHOE COUNTY
ASSESSOR'S OFFICE
Michael E. Clark, Assessor

1001 East Ninth Street
Building D
Reno, Nevada 89512
(775) 328-2231



1 inch = 200 feet



created by: NLH 7/20/2011
last updated: NLH 5/10/2012 CFB 5/21/2015

area previously shown on map(s)
160-09

NOTE: This map was prepared for the use of the Washoe County Assessor for assessment and illustrative purposes only. It does not represent a survey of the premises. No liability is assumed as to the sufficiency or accuracy of the data delineated hereon.