

**POR. E 1/2 SECTION 8
T18N - R20E**

STATE OF NEVADA

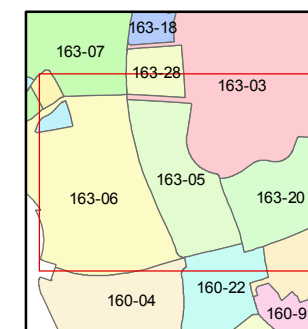
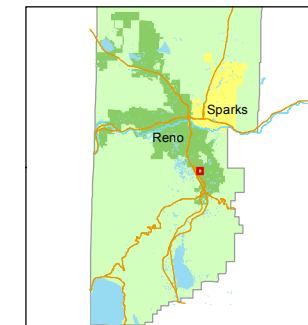
**WASHOE COUNTY
ASSESSOR'S OFFICE**

Michael E. Clark, Assessor

1001 East Ninth Street
Building D
Reno, Nevada 89512
(775) 328-2231



1 inch = 200 feet



created by: CFB 01/17/2014

last updated: CFB 07/14/2015

area previously shown on map(s)

NOTE: This map was prepared for the use of the Washoe County Assessor for assessment and illustrative purposes only. It does not represent a survey of the premises. No liability is assumed as to the sufficiency or accuracy of the data delineated hereon.



*Parcels within an industrial subdivision pursuant to NRS 278.325