

# (#1941) AMENDED SPRING VALLEY ESTATES UNIT 4

PORTION OF SW 1/4 OF SEC. 17  
& SE 1/4 OF SEC. 18  
T18N - R20E

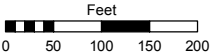
## (#681) WESTRIDGE ESTATES NO. 1

PORTION OF SE 1/4 OF SEC. 18  
T18N - R20E

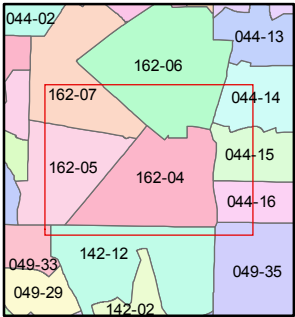
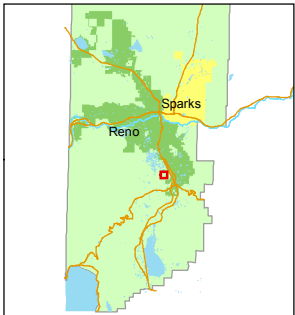
Assessor's Map Number  
**162-04**

STATE OF NEVADA  
**WASHOE COUNTY**  
ASSESSOR'S OFFICE  
Joshua G. Wilson, Assessor

1001 East Ninth Street  
Building D  
Reno, Nevada 89512  
(775) 328-2231



1 inch = 200 feet



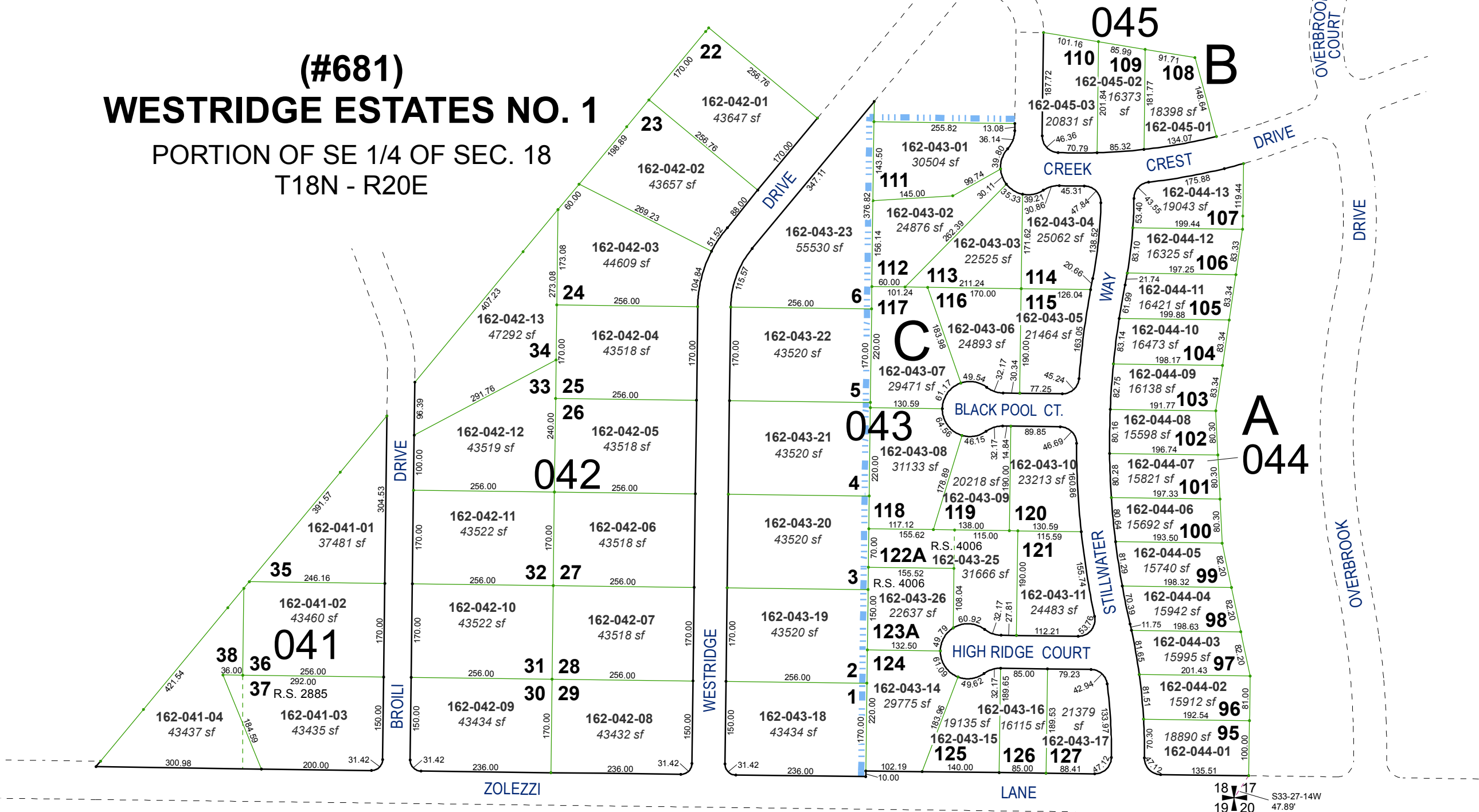
created by: TWT 5/16/2014

last updated: \_\_\_\_\_

area previously shown on map(s)

**044-08**

NOTE: This map was prepared for the use of the Washoe County Assessor for assessment and illustrative purposes only. It does not represent a survey of the premises. No liability is assumed as to the sufficiency or accuracy of the data delineated herein.



18 17  
19 20 S33-27-14W  
47.89'