

**(#4440)
DOUBLE DIAMOND RANCH
VILLAGE 8B**
PORTION OF THE NE 1/4 OF SEC. 16
T18N - R20E

*NOTE: Streets and common area are parceled on 161-33

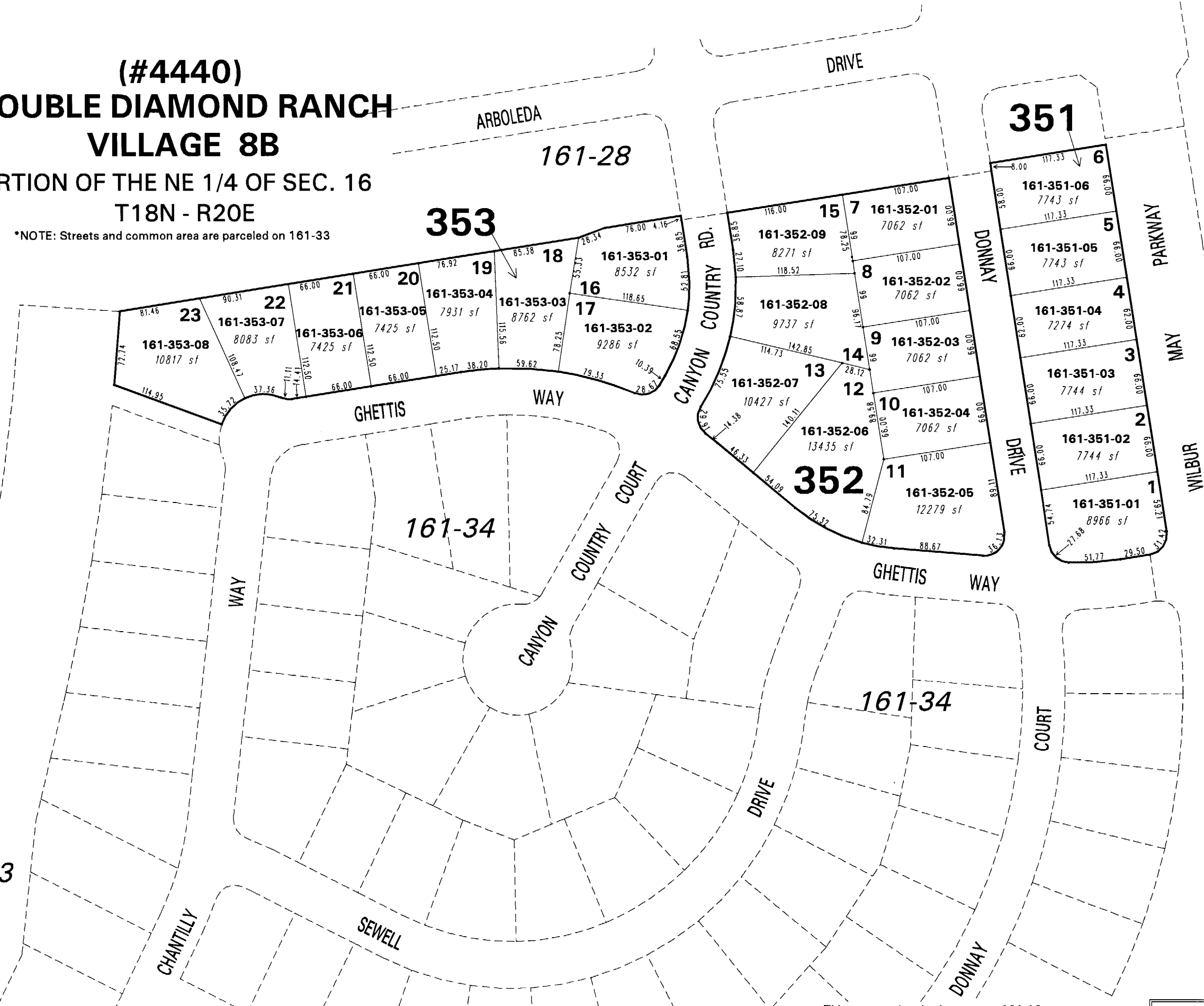
160-54

161-33

161-28

161-30

161-29



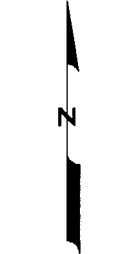
NOTE: This map is prepared for the use of the Washoe County Assessor for assessment and illustrative purposes only. It does not represent a survey of the premises. No liability is assumed as to the sufficiency or the accuracy of the data delineated hereon.

Office of Washoe County Assessor, Nevada - Robert W. McGowan

This area previously shown on 161-18

NOTE: Areas of parcels which are less than 2 acres are shown in square feet.

Drawn by PK 03/07/05
Revised



1" = 100'

