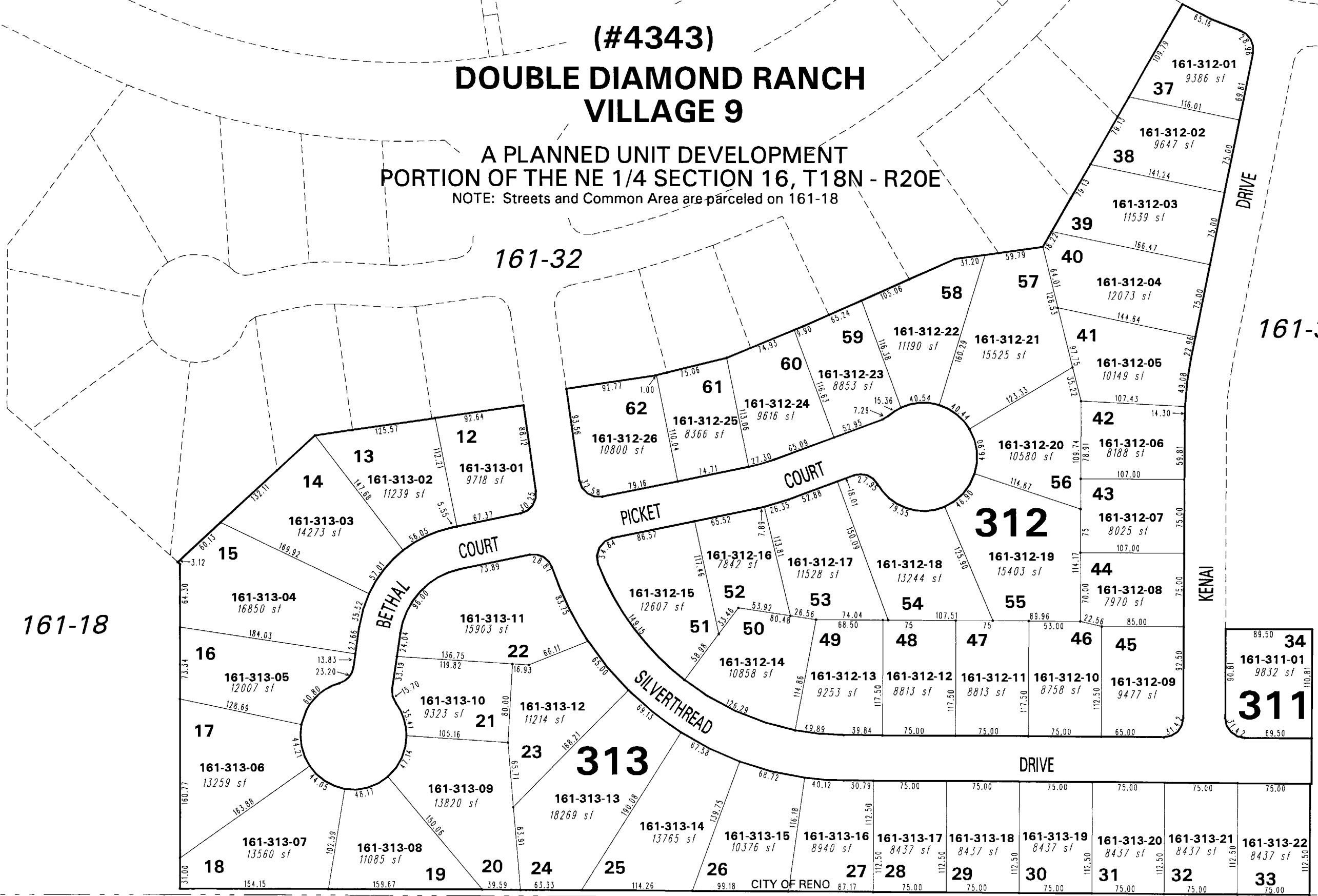


(#4343)

# DOUBLE DIAMOND RANCH VILLAGE 9

## A PLANNED UNIT DEVELOPMENT PORTION OF THE NE 1/4 SECTION 16, T18N - R20E

NOTE: Streets and Common Area are parceled on 161-18



161-36

161-18

161-32

161-36

# 312

# 313

# 311



1" = 100'



NOTE: This map is prepared for the use of the Washoe County Assessor for assessment and illustrative purposes only. It does not represent a survey of the premises. No liability is assumed as to the sufficiency or the accuracy of the data delineated hereon.

### BOOK 140

Office of Washoe County Assessor, Nevada - Robert W. McGowan

This area previously shown on 161-18

NOTE: Areas of parcels which are less than 2 acres are shown in square feet.

Drawn by CFB 6/28/2004  
Revised CFB 7/21/2004 PK 4/09/05