

"NALS GPS 8"  
WASHOE COUNTY "GPS 907"  
N 14,840,817.00  
E 2,291,007.44

WASHOE COUNTY "GPS 802"  
"TRUCKEE"  
N 14,838,560.79  
E 2,307,288.97

161-02

LOT A  
COMMON AREA

041

042

161-03

161-05

161-09

161-11

Office of Washoe County Assessor, Nevada - Robert W. McGowan

(#3972)  
**DOUBLE DIAMOND RANCH  
VILLAGE 24B**

PORTION OF THE E 1/2 OF SEC. 9  
T18N - R20E

161-23

BOOK 160

FRANKWOOD DRIVE

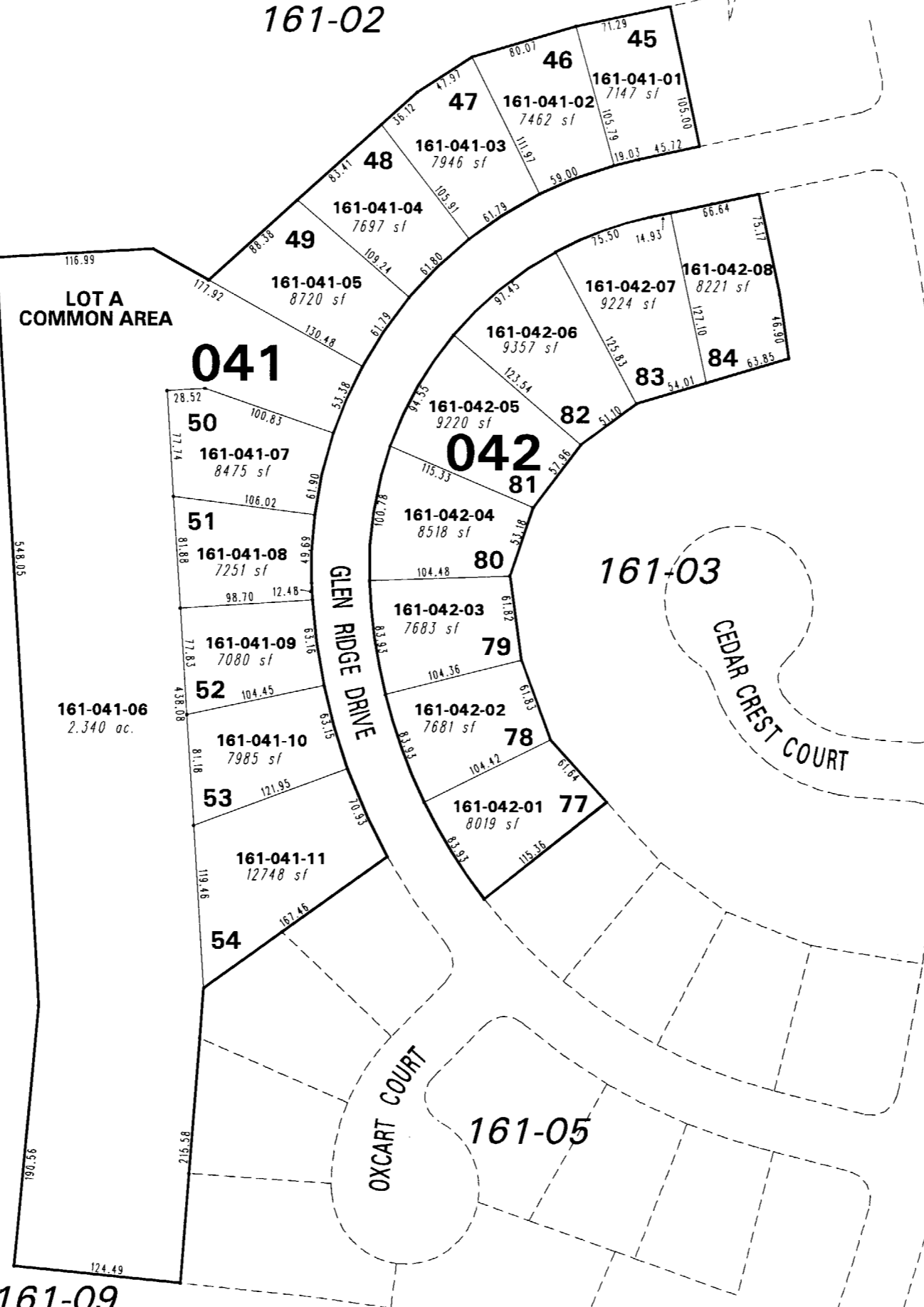
WILBUR MAY PARKWAY

CEDAR CREST DRIVE

CEDAR CREST COURT

GLEN RIDGE DRIVE

OXCART COURT



NOTE: This map is prepared for the use of the Washoe County Assessor for assessment and illustrative purposes only. It does not represent a survey of the premises. No liability is assumed as to the sufficiency or the accuracy of the data delineated hereon.

This area previously shown on 161-01

NOTE: Areas of parcels which are less than 2 acres are shown in square feet.

Drawn by HCS 7/16/01  
 Revised HCS 11/13/01 HCS 7/14/03  
 CFB 5/7/2004

