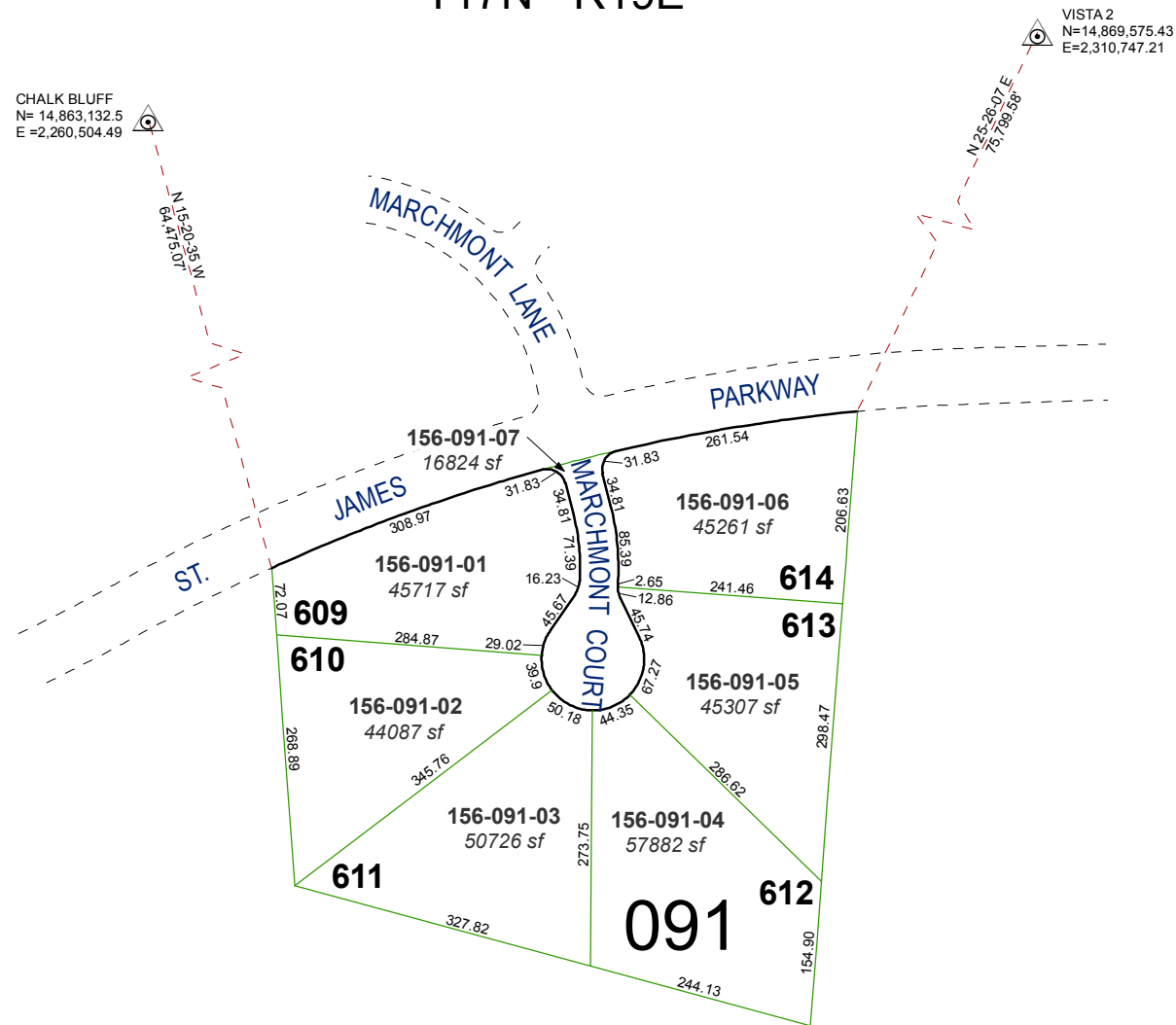


**(#3883)**  
**ST. JAMES'S VILLAGE - UNIT 1E**  
 A POR. OF THE NE ¼ OF SEC. 14  
 T17N - R19E



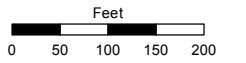
NOTE:  
 MARCHMONT COURT IS A PRIVATE STREET  
 PER C. OF A. DOCUMENT #2772812

Assessor's Map Number

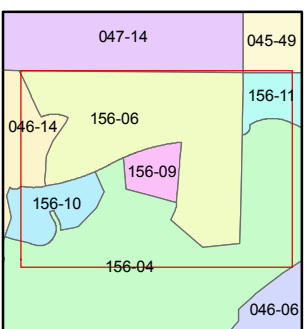
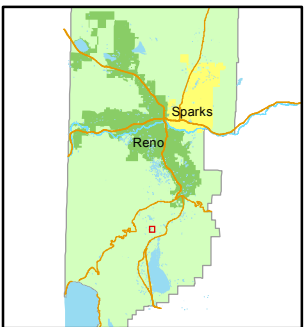
**156-09**

STATE OF NEVADA  
**WASHOE COUNTY**  
**ASSESSOR'S OFFICE**  
 Joshua G. Wilson, Assessor

1001 East Ninth Street  
 Building D  
 Reno, Nevada 89512  
 (775) 328-2231



1 inch = 200 feet



created by: NLH 01/12/2012

last updated: \_\_\_\_\_

area previously shown on map(s)

046-06

NOTE: This map was prepared for the use of the Washoe County Assessor for assessment and illustrative purposes only. It does not represent a survey of the premises. No liability is assumed as to the sufficiency or accuracy of the data delineated hereon.