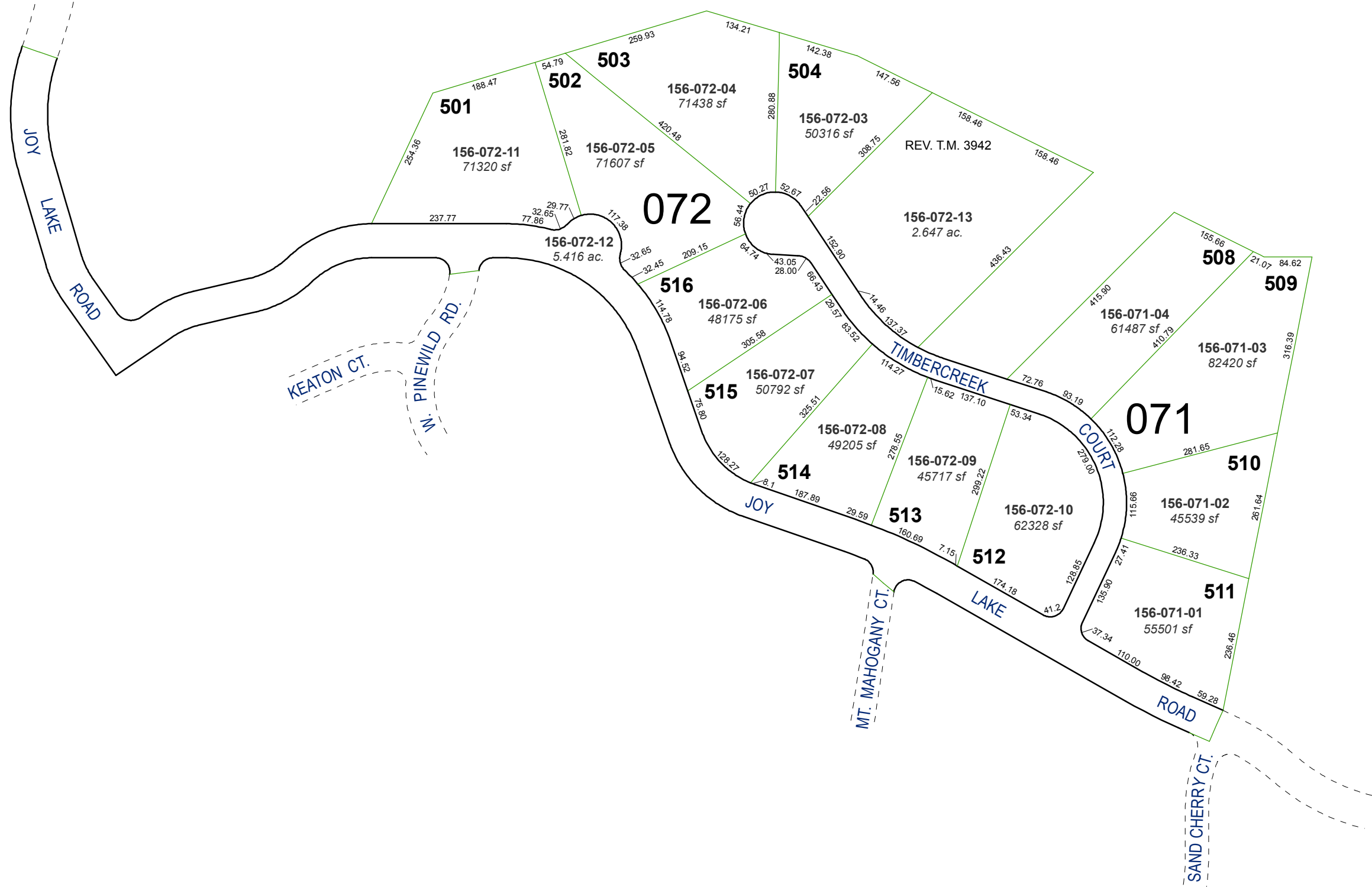


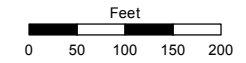
**(#3602)**  
**ST. JAMES'S VILLAGE - UNIT 2A**  
 PORTIONS OF THE W ½ OF SEC. 14  
 AND OF THE NE ¼ OF SEC. 15  
 T17N - R19E



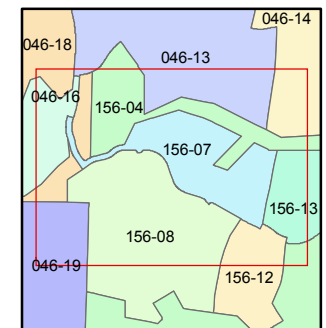
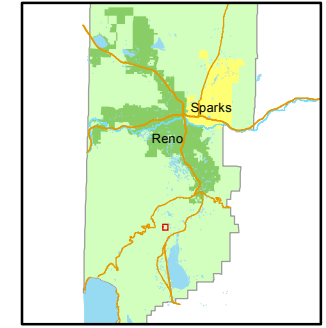
Assessor's Map Number  
**156-07**

STATE OF NEVADA  
**WASHOE COUNTY**  
**ASSESSOR'S OFFICE**  
 Joshua G. Wilson, Assessor

1001 East Ninth Street  
 Building D  
 Reno, Nevada 89512  
 (775) 328-2231



1 inch = 200 feet



created by: NLH 01/12/2012

last updated: \_\_\_\_\_

area previously shown on map(s)  
046-06 & 18

NOTE: This map was prepared for the use of the Washoe County Assessor for assessment and illustrative purposes only. It does not represent a survey of the premises. No liability is assumed as to the sufficiency or accuracy of the data delineated hereon.