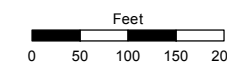
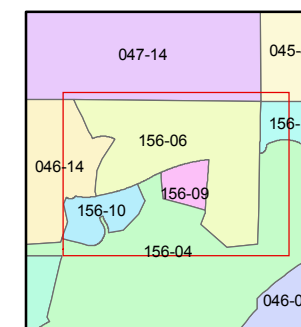
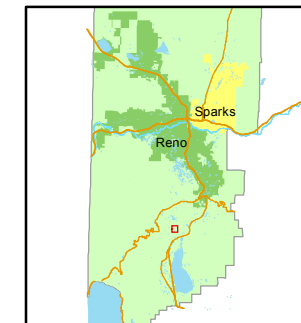


STATE OF NEVADA  
**WASHOE COUNTY**  
ASSESSOR'S OFFICE  
Joshua G. Wilson, Assessor

1001 East Ninth Street  
Building D  
Reno, Nevada 89512  
(775) 328-2231



1 inch = 200 feet



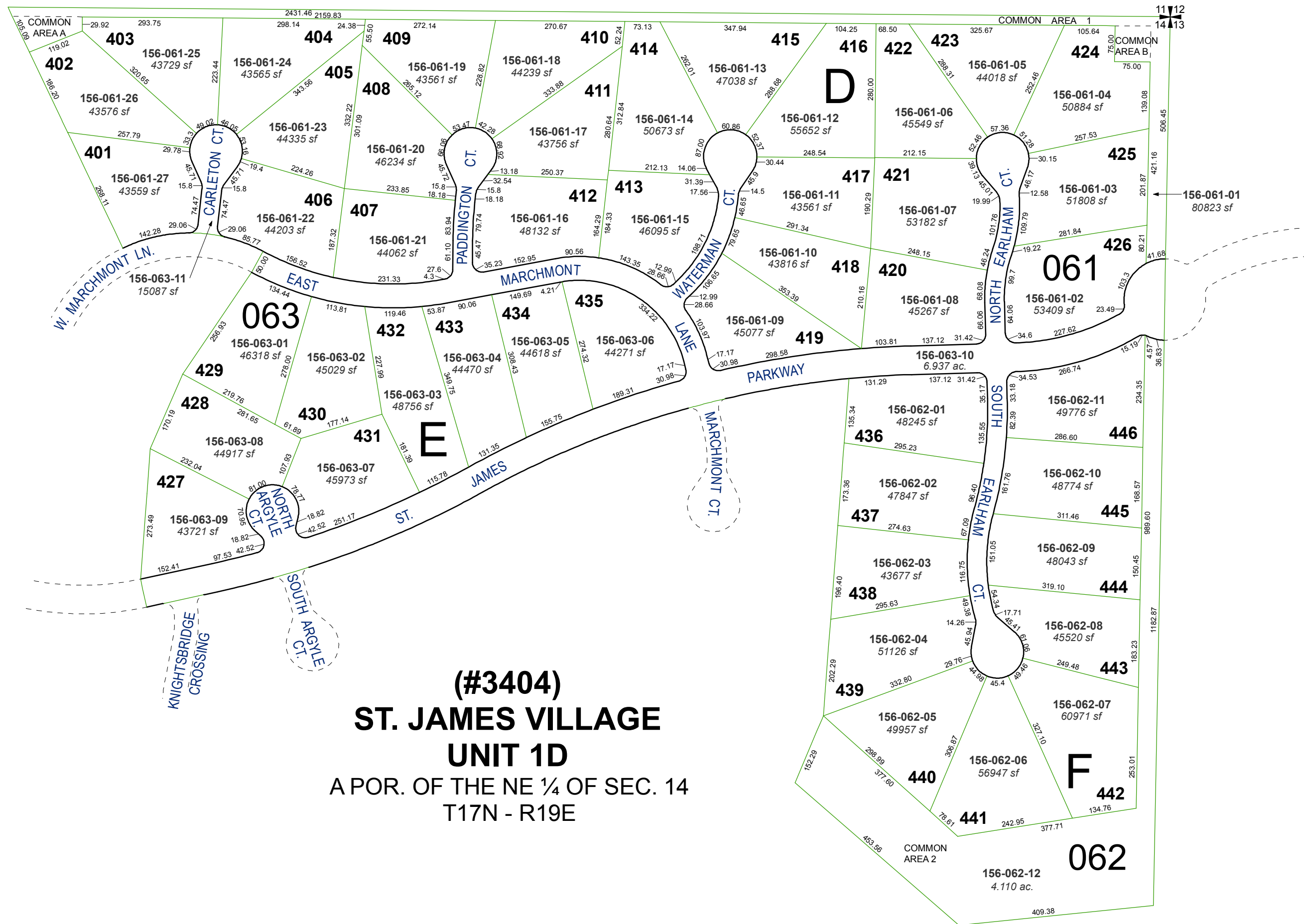
created by: NLH 01/12/2012

last updated: \_\_\_\_\_

area previously shown on map(s)

046-06

NOTE: This map was prepared for the use of the Washoe County Assessor for assessment and illustrative purposes only. It does not represent a survey of the premises. No liability is assumed as to the sufficiency or accuracy of the data delineated hereon.



**(#3404)**  
**ST. JAMES VILLAGE**  
**UNIT 1D**  
A POR. OF THE NE ¼ OF SEC. 14  
T17N - R19E