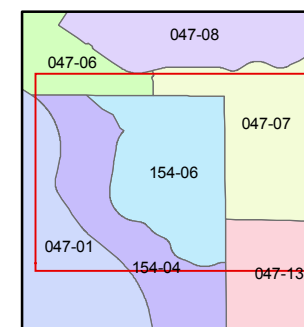
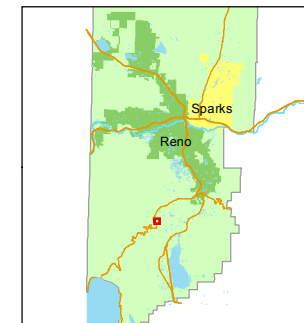


1 inch = 200 feet



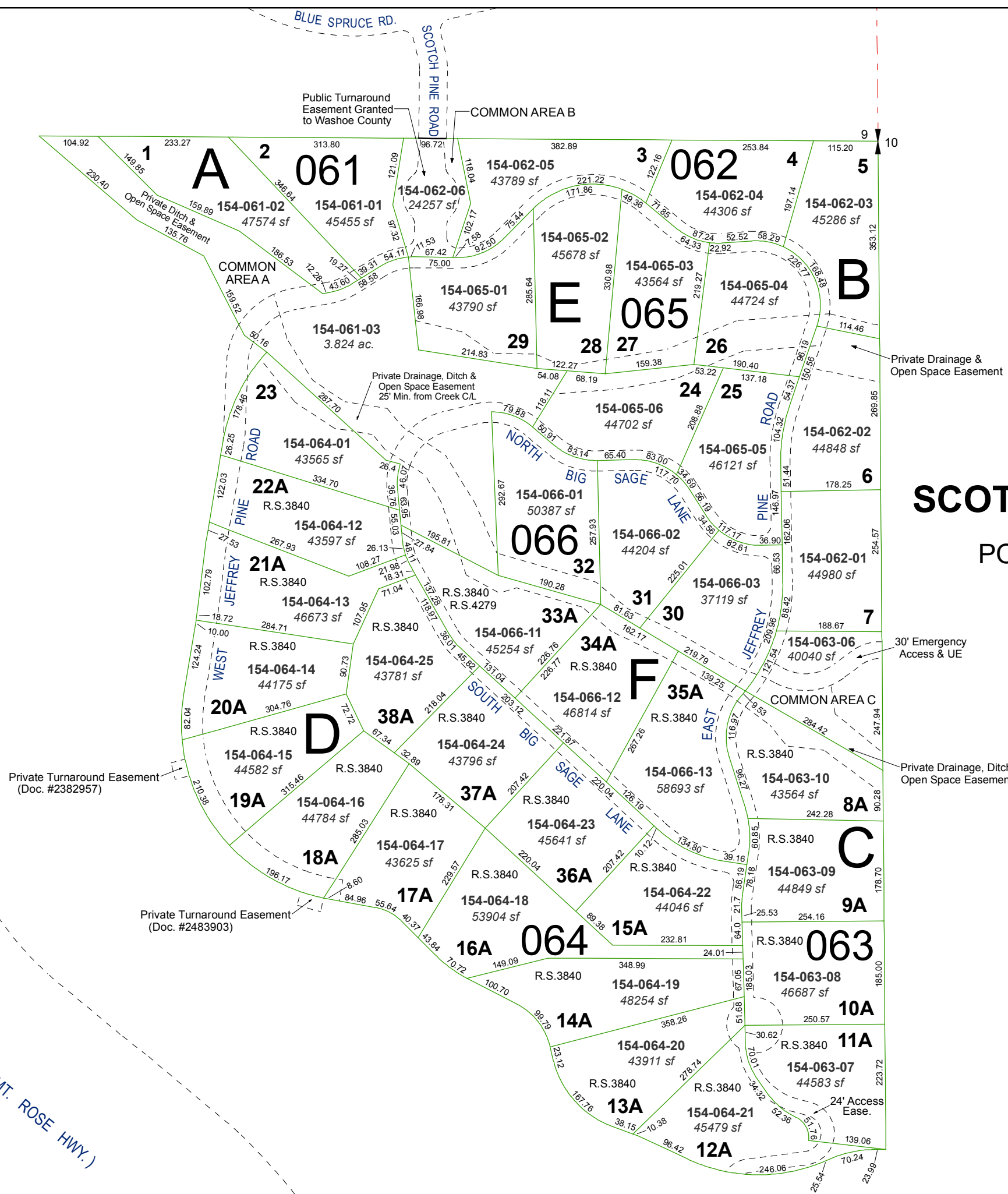
created by: KSB 3/09/2012

last updated: _____

area previously shown on map(s)

154-04

NOTE: This map was prepared for the use of the Washoe County Assessor for assessment and illustrative purposes only. It does not represent a survey of the premises. No liability is assumed as to the sufficiency or accuracy of the data delineated hereon.



(#3758)
SCOTCH PINES ESTATES
PORTION OF THE SE 1/4
OF SECTION 9
T17N - R19E

NOTE: STREETS ARE A PRIVATE ACCESS & PUBLIC UTILITY EASEMENT