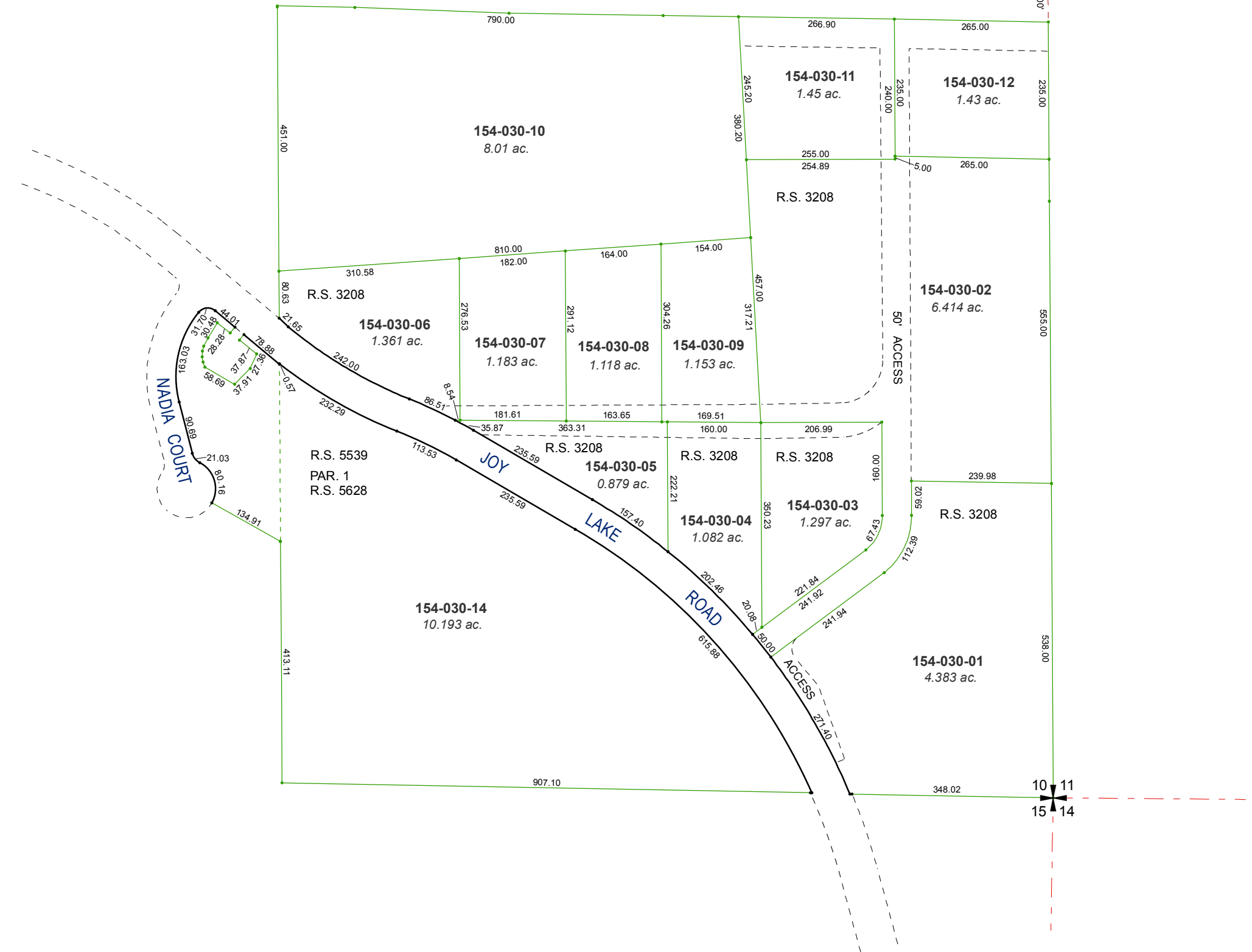


POR. OF SE¼ SECTION 10
T17N - R19E

10 11

N01°04'00"W 1328.00'



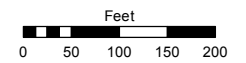
10 11
15 14

Assessor's Map Number

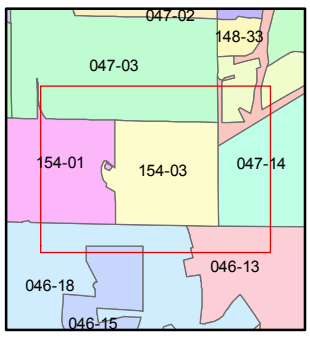
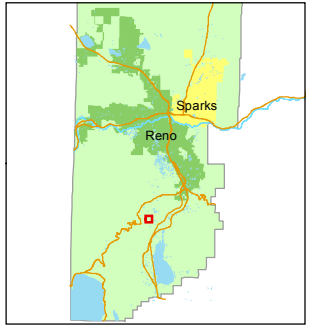
154-03

STATE OF NEVADA
WASHOE COUNTY
ASSESSOR'S OFFICE
Michael E. Clark, Assessor

1001 East Ninth Street
Building D
Reno, Nevada 89512
(775) 328-2231



1 inch = 200 feet



created by: KSB 3/06/2012

last updated: CFB 1/16/14 KSB 5/08/15

area previously shown on map(s)
047-01

NOTE: This map was prepared for the use of the Washoe County Assessor for assessment and illustrative purposes only. It does not represent a survey of the premises. No liability is assumed as to the sufficiency or accuracy of the data delineated hereon.