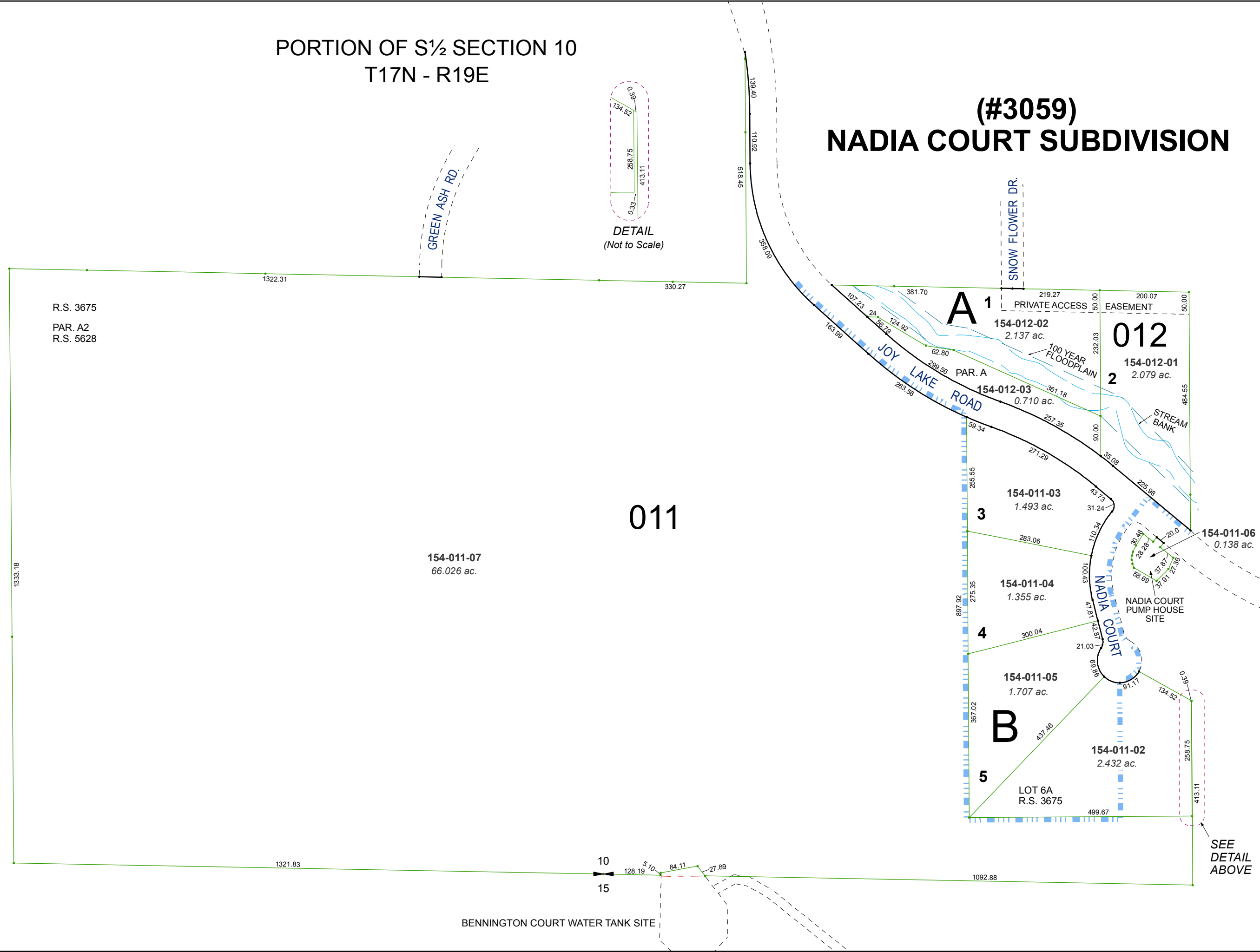


PORTION OF S½ SECTION 10  
T17N - R19E

**(#3059)  
NADIA COURT SUBDIVISION**

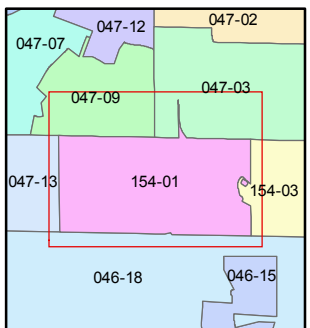
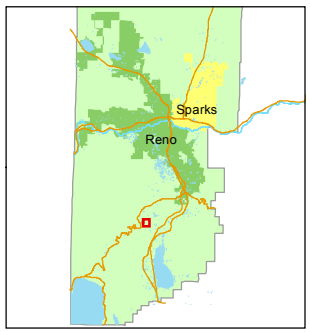
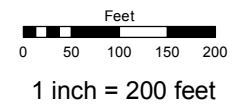
DETAIL  
(Not to Scale)



Assessor's Map Number  
**154-01**

STATE OF NEVADA  
**WASHOE COUNTY**  
ASSESSOR'S OFFICE  
Michael E. Clark, Assessor

1001 East Ninth Street  
Building D  
Reno, Nevada 89512  
(775) 328-2231



created by: KSB 3/07/2012

last updated: KSB 5/08/15

area previously shown on map(s)  
047-01

NOTE: This map was prepared for the use of the Washoe County Assessor for assessment and illustrative purposes only. It does not represent a survey of the premises. No liability is assumed as to the sufficiency or accuracy of the data delineated hereon.