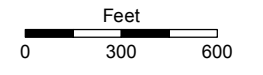


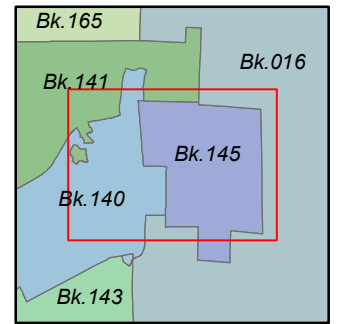
T18N - R20E

STATE OF NEVADA  
**WASHOE COUNTY**  
**ASSESSOR'S OFFICE**  
Joshua G. Wilson, Assessor

1001 East Ninth Street  
Building D  
Reno, Nevada 89512  
(775) 328-2231

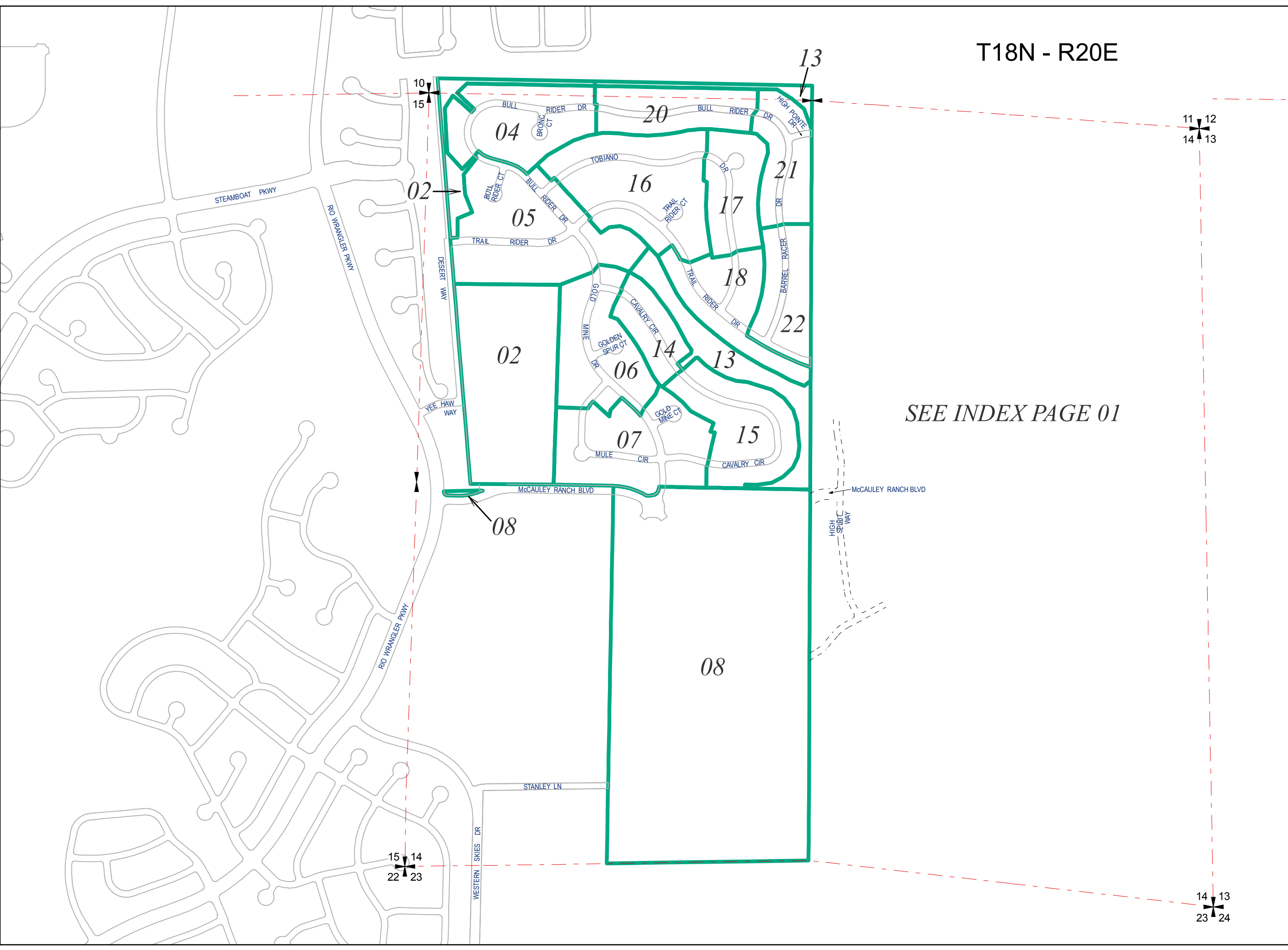


1 inch = 600 feet



created by: NLH 3/25/2011  
last updated: KSB 4/30/13 CFB 09/30/13  
KSB 11/10/14

NOTE: This map was prepared for the use of the Washoe County Assessor for assessment and illustrative purposes only. It does not represent a survey of the premises. No liability is assumed as to the sufficiency or accuracy of the data delineated hereon.



SEE INDEX PAGE 01

10  
15

13

11 12  
14 13

15 14  
22 23

14 13  
23 24