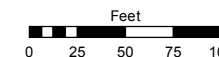
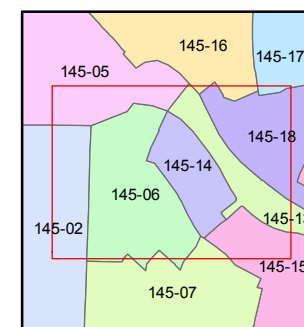
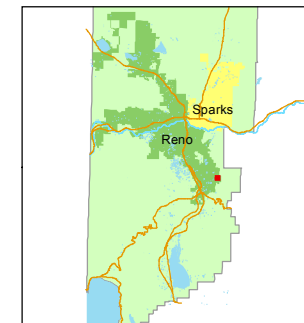


STATE OF NEVADA
WASHOE COUNTY
ASSESSOR'S OFFICE
Joshua G. Wilson, Assessor

1001 East Ninth Street
Building D
Reno, Nevada 89512
(775) 328-2231



1 inch = 100 feet



created by: NLH 3/24/2011

last updated: KSB 11/17/14

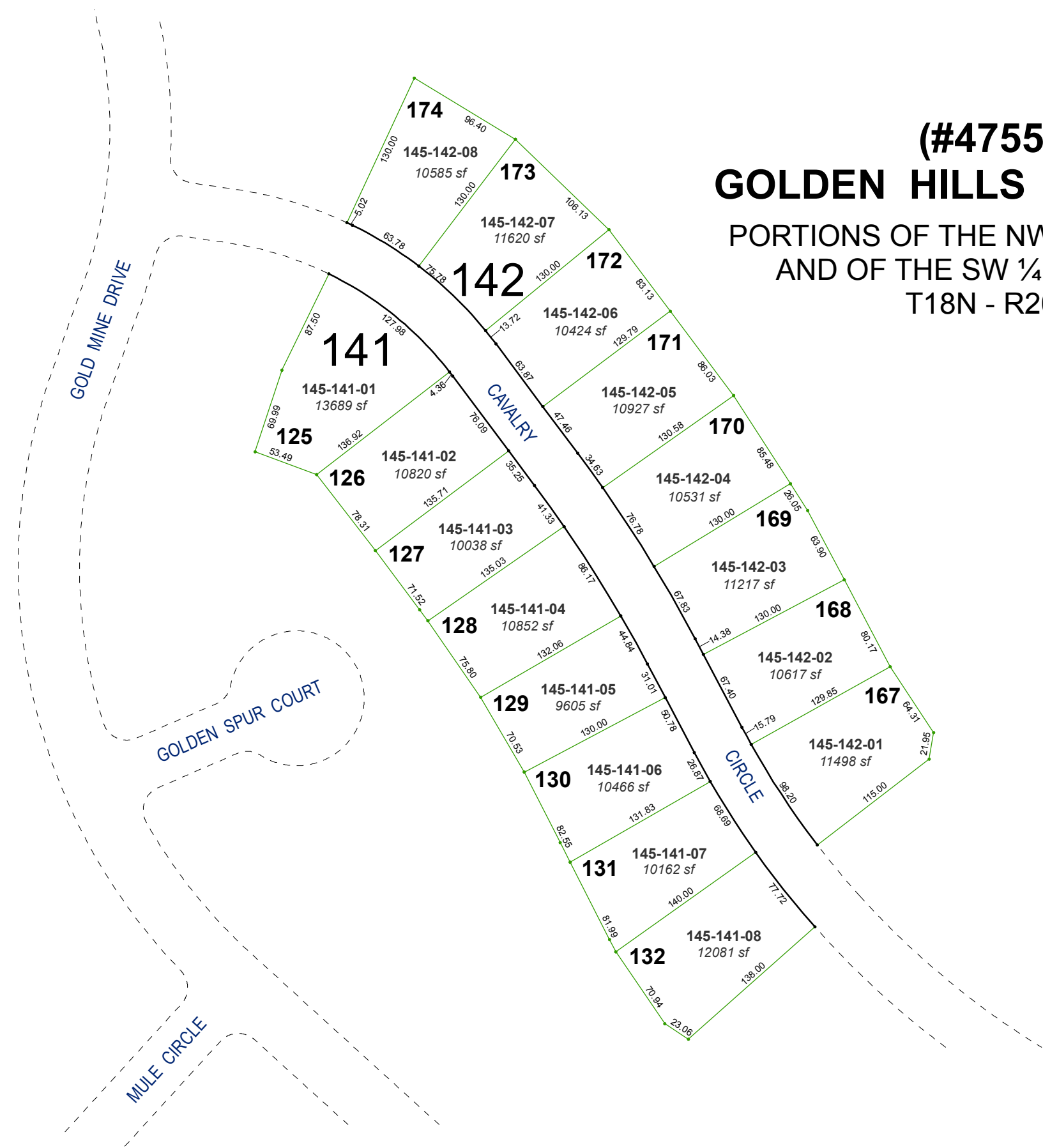
area previously shown on map(s)

145-02

NOTE: This map was prepared for the use of the Washoe County Assessor for assessment and illustrative purposes only. It does not represent a survey of the premises. No liability is assumed as to the sufficiency or accuracy of the data delineated hereon.

(#4755) GOLDEN HILLS PHASE 2A

PORTIONS OF THE NW ¼ OF SEC. 14 AND OF THE SW ¼ OF SEC. 11 T18N - R20E



174

145-142-08
10585 sf

173

145-142-07
11620 sf

142

172

145-142-06
10424 sf

171

145-142-05
10927 sf

170

141

145-141-01
13689 sf

125

145-141-02
10820 sf

126

145-141-03
10038 sf

127

145-141-04
10852 sf

128

145-141-05
9605 sf

129

145-141-06
10466 sf

130

145-141-07
10162 sf

131

145-141-08
12081 sf

132

145-142-04
10531 sf

169

145-142-03
11217 sf

168

145-142-02
10617 sf

167

145-142-01
11498 sf