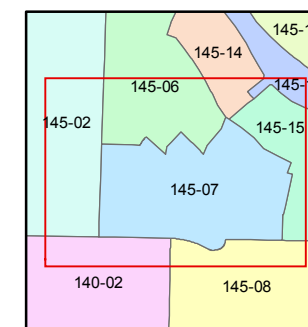
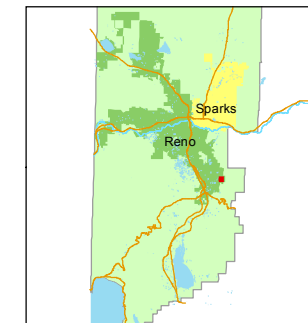


1 inch = 100 feet



created by: NLH 3/18/2011

last updated: KSB 4/29/13

area previously shown on map(s)

145-02

NOTE: This map was prepared for the use of the Washoe County Assessor for assessment and illustrative purposes only. It does not represent a survey of the premises. No liability is assumed as to the sufficiency or accuracy of the data delineated hereon.

**(#4674)**  
**GOLDEN HILLS PHASE 1**  
PORTIONS OF THE W 1/2 OF SEC. 14  
AND THE SW 1/4 OF SEC. 11  
T18N - R20E



**(#4701)**  
**McCAULEY RANCH ESTATES**